



# SZABO SCANDIC

Part of Europa Biosite

## Produktinformation



Forschungsprodukte & Biochemikalien



Zellkultur & Verbrauchsmaterial



Diagnostik & molekulare Diagnostik



Laborgeräte & Service

Weitere Information auf den folgenden Seiten!  
See the following pages for more information!



### Lieferung & Zahlungsart

siehe unsere [Liefer- und Versandbedingungen](#)

### Zuschläge

- Mindermengenzuschlag
- Trockeneiszuschlag
- Gefahrgutzuschlag
- Expressversand

### SZABO-SCANDIC HandelsgmbH

Quellenstraße 110, A-1100 Wien

T. +43(0)1 489 3961-0

F. +43(0)1 489 3961-7

[mail@szabo-scandic.com](mailto:mail@szabo-scandic.com)

[www.szabo-scandic.com](http://www.szabo-scandic.com)

[linkedin.com/company/szaboscandic](https://www.linkedin.com/company/szaboscandic) 



6042 Cornerstone Court W, Ste B  
San Diego, CA 92121  
**Tel:** 1.858.202.1401  
**Fax:** 1.858.481.8694  
**Email:** [info@bpsbioscience.com](mailto:info@bpsbioscience.com)

## **Data Sheet**

### **CD22 / Luciferase - CHO Recombinant Cell Line**

### **Catalog #79715**

#### **Description**

Recombinant clonal stable CHO cell line constitutively expressing full length human CD22 protein (Genbank #NM\_001771) and the firefly luciferase. Surface expression of CD22 was confirmed by flow cytometry.

#### **Background**

CD22, also known as Siglec-2, is expressed on the membrane of B-cells. It is reported to act as an inhibitory co-receptor of the B-cell receptor to control the body's B-cell response. In 2017 the FDA approved inotuzumab ozogamicin (Besponsa), an antibody-drug conjugate targeting CD22, for patients with B-cell acute lymphoblastic leukemia (ALL). Additional therapies targeting CD22 are under evaluation.

#### **Application**

Useful for screening and validating antibodies against CD22 and different CD22 CAR-T for immunotherapy research and drug discovery. Also useful for CD22 binding assays to screen for CD22 ligands.

#### **Host Cell**

CHO K1 cell line, Chinese Hamster Ovary

#### **Format**

Each vial contains  $\sim 2 \times 10^6$  cells in 1 ml of 10% DMSO in FBS.

#### **Storage**

Store in liquid nitrogen immediately upon receipt.

#### **Materials Required but Not Supplied**

- Thaw Medium 3 (BPS Bioscience, #60186)
- Growth Medium 3A (BPS Bioscience, #60188)
- 96-well tissue culture-treated white clear-bottom assay plate
- ONE-Step luciferase assay system (BPS Bioscience, #60690) or other luciferase reagent for measuring firefly luciferase activity
- Luminometer

OUR PRODUCTS ARE FOR RESEARCH USE ONLY. NOT FOR DIAGNOSTIC OR THERAPEUTIC USE.

To place your order, please contact us by Phone **1.858.202.1401** Fax **1.858.481.8694**

Or you can Email us at: [\*\*info@bpsbioscience.com\*\*](mailto:info@bpsbioscience.com)

Please visit our website at: [\*\*www.bpsbioscience.com\*\*](http://www.bpsbioscience.com)



6042 Cornerstone Court W, Ste B  
San Diego, CA 92121  
**Tel:** 1.858.202.1401  
**Fax:** 1.858.481.8694  
**Email:** [info@bpsbioscience.com](mailto:info@bpsbioscience.com)

### Cell Culture

**Thaw Medium 3 (BPS Bioscience, #60186):** Ham's F-12 medium (Hyclone #SH30526.01) supplemented with 10% FBS (Life technologies #26140-079), 1% Penicillin/Streptomycin (Hyclone #SV30010.01).

**Growth Medium 3A (BPS Bioscience, #60188):** Thaw Medium 3 (BPS Bioscience, #60186) plus 1 mg/ml G418 (Thermo Fisher, #11811031) and 500 µg/ml of Hygromycin B (Thermo Fisher, #10687010) to ensure recombinant expression.

Cells should be grown at 37°C with 5% CO<sub>2</sub> using Growth Medium 3A. CD22/Luciferase CHO cells should exhibit a typical cell division time of ~24 hours.

It is recommended to quickly thaw the frozen cells from liquid nitrogen in a 37°C water bath, transfer to a tube containing 10 ml of **Thaw Medium 3 (no Geneticin or Hygromycin B)**, spin the cells down, remove the supernatant, and then re-suspend the cells in pre-warmed Thaw Medium 3 (**no Geneticin or Hygromycin B**). Then transfer the re-suspended cells to a T25 flask and culture in a 37°C CO<sub>2</sub> incubator overnight. The next day, replace the medium with fresh Thaw Medium 3 (**no Geneticin or Hygromycin B**) and continue growing in a CO<sub>2</sub> incubator at 37°C until the cells are ready to be split. Cells should be split before they reach complete confluence. After the first passage, switch to **Growth Medium 3A** (contains **Geneticin and Hygromycin B**).

To passage the cells, rinse the cells with Phosphate Buffered Saline (PBS), detach the cells from the culture vessel with 0.25% Trypsin/EDTA, and add Growth Medium 3A and transfer to a tube. Next, spin the cells down, remove the supernatant, and then re-suspend the cells and seed appropriate aliquots of the cell suspension into new culture vessels. Suggested subcultivation ratios: 1:10 to 1:20 twice a week.

To freeze the cells down, rinse the cells with Phosphate Buffered Saline (PBS), and detach the cells from the culture vessel with 0.25% Trypsin/EDTA. After detachment, add **Thaw Medium 3 (no Geneticin or Hygromycin B)** and count the cells, then transfer to a tube, spin the cells down, and resuspend in 4°C Freezing Medium (10% DMSO + 90% FBS) at ~2 x 10<sup>6</sup> cells/ml. Dispense 1 ml of cell aliquots into each cryogenic vial. Place vials in an insulated container for slow cooling and store at -80°C overnight. Transfer to liquid nitrogen the next day for storage. It is recommended to expand the cells and freeze down more than 10 vials of cells for future use at early passages.

### Mycoplasma Testing

This cell line has been screened using the MycoAlert™ Mycoplasma Detection Kit (Lonza, #LT07-118) to confirm the absence of Mycoplasma contamination. MycoAlert Assay Control Set (Lonza, #LT07-518) was used as a positive control.

OUR PRODUCTS ARE FOR RESEARCH USE ONLY. NOT FOR DIAGNOSTIC OR THERAPEUTIC USE.

To place your order, please contact us by Phone **1.858.202.1401** Fax **1.858.481.8694**

Or you can Email us at: [info@bpsbioscience.com](mailto:info@bpsbioscience.com)

Please visit our website at: [www.bpsbioscience.com](http://www.bpsbioscience.com)



6042 Cornerstone Court W, Ste B  
San Diego, CA 92121  
**Tel:** 1.858.202.1401  
**Fax:** 1.858.481.8694  
**Email:** info@bpsbioscience.com

### Application References

1. Poe J, *et al.* CD22 and Siglec-G in B cell function and tolerance. *Trends Immunol.* 2012 Aug; **33(8)**:413-420.
2. Dorner T, *et al.* The mechanistic impact of CD22 engagement with epratuzumab on B cell function: Implications for the treatment of systemic lupus erythematosus. *Autoimmunity Reviews.* 2015 **14**:1079-1086.
3. Wei G., *et al.* Novel immunotherapies for adult patients with B-lineage acute lymphoblastic leukemia. *Journal of Hematology and Oncology.* 2017 **10**:1-13.

### Vector and Sequence

Human CD22 (NM\_001771) was cloned into pIRESneo.

TYRALDGDLESFILFHNPEYNKNTSKFDGTRLYESTKDGKVPSEQKRVQFLGDKNKNCTLSIHP  
VHLNDSGQLGLRMESKTEKWMERIHNLVSEPPFPHIQLPPEIQESQEVTLTCLLNFSYGYPI  
QLQWLLEGVPMRQAAVTSTSLTIKSVFTRSELKFSQWSSHGKIVTCQLQDADGKFLSNDTVQ  
LNVKHTPKLEIKVTPSDAIVREGDSVTMTCEVSSSNPEYTTVSWLKDGTSLKKQNTFTLNLREV  
TKDQSGKYCCQVSNDVGPGRSEEVFLQVQYAPEPSTVQILHSPAVEGSQVEFLCMLANPLP  
TNYTWYHNGKEMQGRTEEKVHIPKILPWHAGTYSCVAENILGTGQRGPGAELDVQYPPKKVTT  
VIQNPMPIREGDTVTLSCNYNSSNPSVTRYEWKPHGAWEEPSLGVLKIQNVGWDNTTIIACAAC  
NSWCSWASPVALNVQYAPRDVVRKIKPLSEIHSGNSVSLQCDFSSSHPKEVQFFWEKNGRL  
LGKESQLNFDSISPEDAGSYSCWVNNSIGQTASKAWTLEVLYAPRRLRVSMSPGDQVMEGKS  
ATLTCESDANPPVSHYTWFDWNNQSLPYHSQKLRLEPVKVQHSGAYWCQGTNSVGKGRSPL  
STLTVYYSPETIGRRVAVGLGSLAILILAICGLKLRRWKRTQSQQGLQENSSGQSFFVRNKK  
VRRAPLSEGPLSLGCYNPMMEDGISYTTLRFPEMNIPRTGDAESSEMQRPPPCDDTDTYSA  
LHKRQVGDYENVIPDFPEDEGIHYSELIQFGVGERPQAQENVDYVILKH

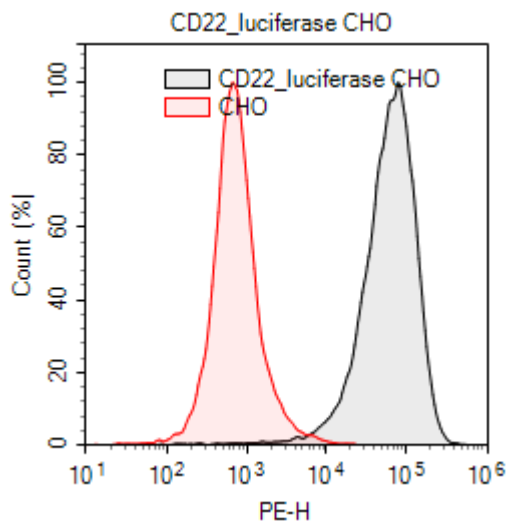
OUR PRODUCTS ARE FOR RESEARCH USE ONLY. NOT FOR DIAGNOSTIC OR THERAPEUTIC USE.

To place your order, please contact us by Phone **1.858.202.1401** Fax **1.858.481.8694**

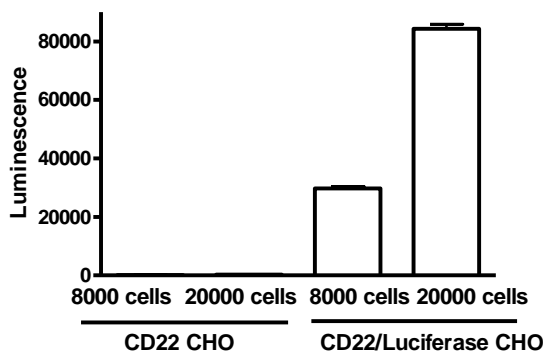
Or you can Email us at: [info@bpsbioscience.com](mailto:info@bpsbioscience.com)

Please visit our website at: [www.bpsbioscience.com](http://www.bpsbioscience.com)

**Quality Assurance**



**Figure 1. Expression of CD22 validated by flow cytometry.** Flow cytometry using PE-conjugated anti-human CD22 antibody (Biolegend, #302506) to detect CD22 surface expression on either CD22/Luciferase CHO cells (black) or parental CHO-K1 cells (red).



**Figure 2. Luciferase activity of CD22/Luciferase CHO recombinant cells.**

CD22/Luciferase CHO recombinant cells were seeded in a 96-well plate at 8000 cells/well or 20000 cells/well. The next day, luciferase activity was measured using the ONE-Step luciferase assay system (BPS Bioscience, #60690).

OUR PRODUCTS ARE FOR RESEARCH USE ONLY. NOT FOR DIAGNOSTIC OR THERAPEUTIC USE.  
 To place your order, please contact us by Phone **1.858.202.1401** Fax **1.858.481.8694**  
 Or you can Email us at: [info@bpsbioscience.com](mailto:info@bpsbioscience.com)  
 Please visit our website at: [www.bpsbioscience.com](http://www.bpsbioscience.com)



6042 Cornerstone Court W, Ste B  
San Diego, CA 92121  
**Tel:** 1.858.202.1401  
**Fax:** 1.858.481.8694  
**Email:** [info@bpsbioscience.com](mailto:info@bpsbioscience.com)

**License Disclosure:** Purchase of this cell line grants you with a 10-year license to use this cell line in your immediate laboratory, for research use only. This license does not permit you to share, distribute, sell, sublicense, or otherwise make the cell line available for use to other laboratories, departments, research institutions, hospitals, universities, or biotech companies. The license does not permit the use of this cell line in humans or for therapeutic or drug use. The license does not permit modification of the cell line in any way. Inappropriate use or distribution of this cell line will result in revocation of the license and result in an immediate cease of sales and distribution of BPS products to your laboratory. BPS does not warrant the suitability of the cell line for any particular use, and does not accept any liability in connection with the handling or use of the cell line. Modifications of this cell line, transfer to another facility, or commercial use of the cells may require a separate license and additional fees; contact [sales@bpsbioscience.com](mailto:sales@bpsbioscience.com) for details. Publications using this cell line should reference BPS Bioscience, Inc., San Diego.

### **Related Products**

<b>Product</b>	<b>Cat. #</b>	<b>Size</b>
Thaw Medium 3	60186	100 ml
Growth Medium 3A	60188	500 ml
CD22, Fc-fusion (IgG1), Avi-Tag HiP™	79464	100 µg
CD22, Fc-fusion (IgG1), Avi-Tag HiP™	79466	50 µg
CD22 CHO Recombinant Cell Line (Medium Expression)	79557-M	2 vials
CD22 CHO Recombinant Cell Line (High Expression)	79557-H	2 vials
BCMA/Luciferase-CHO Recombinant Cell line	79724	2 vials
CD19/Luciferase-CHO Recombinant Cell Line	79714	2 vials
BCMA— CHO Recombinant Cell Line (High Expression)	79500-H	2 vials
BCMA— CHO Recombinant Cell Line (Medium Expression)	79500-M	2 vials
BCMA— CHO Recombinant Cell Line (Low Expression)	79500-L	2 vials

OUR PRODUCTS ARE FOR RESEARCH USE ONLY. NOT FOR DIAGNOSTIC OR THERAPEUTIC USE.

To place your order, please contact us by Phone **1.858.202.1401** Fax **1.858.481.8694**

Or you can Email us at: [info@bpsbioscience.com](mailto:info@bpsbioscience.com)

Please visit our website at: [www.bpsbioscience.com](http://www.bpsbioscience.com)