



SZABO SCANDIC

Part of Europa Biosite

Produktinformation



Forschungsprodukte & Biochemikalien



Zellkultur & Verbrauchsmaterial



Diagnostik & molekulare Diagnostik



Laborgeräte & Service

Weitere Information auf den folgenden Seiten!
See the following pages for more information!



Lieferung & Zahlungsart

siehe unsere [Liefer- und Versandbedingungen](#)

Zuschläge

- Mindermengenzuschlag
- Trockeneiszuschlag
- Gefahrgutzuschlag
- Expressversand

SZABO-SCANDIC HandelsgmbH

Quellenstraße 110, A-1100 Wien

T. +43(0)1 489 3961-0

F. +43(0)1 489 3961-7

mail@szabo-scandic.com

www.szabo-scandic.com

[linkedin.com/company/szaboscandic](https://www.linkedin.com/company/szaboscandic) 



6042 Cornerstone Court W, Ste B
San Diego, CA 92121
Tel: 1.858.202.1401
Fax: 1.858.481.8694
Email: info@bpsbioscience.com

Data Sheet

BCMA / Luciferase - CHO Recombinant Cell Line Cat. #:79724

Product Description

Recombinant CHO-K1 cells constitutively expressing both the human BCMA protein (B-Cell Maturation Antigen or CD269, GenBank accession #NM_001192) and the firefly luciferase reporter. Surface expression of BCMA was confirmed by flow cytometry.

Background

B-Cell Maturation Antigen (BCMA), also known as CD269, is a cell surface receptor of the TNF receptor superfamily that recognizes B-Cell Activating Factor (BAFF). BCMA is preferentially expressed on mature B-lymphocytes and Multiple Myeloma (MM) cells. BCMA is a highly attractive target antigen for immunotherapy not only because of its restricted expression in non-malignant tissue, but also due to its almost universal expression on MM cells. Pre-clinical studies using CAR (Chimeric Antigen Receptor) T-cells targeting BCMA have demonstrated anti-MM activity, and in 2017, the FDA granted BCMA CAR T-Cell immunotherapy the breakthrough designation in treating Multiple Myeloma.

Applications

- Use as BCMA-expressing target cells in co-culture assays with BCMA CAR T-cells to screen for BCMA-specific cell killing

Format

Each vial contains 2×10^6 cells in 1 ml of FBS with 10% DMSO.

Storage

Store in liquid nitrogen immediately upon receipt.

Cell Culture

Thaw Medium 3 (BPS Bioscience #60186): Ham's F-12 medium (Hyclone # SH30526.01) supplemented with 10% FBS (Thermo Fisher, Cat. #26140079), 1% Penicillin/Streptomycin (Hyclone SV30010.01).

Growth Medium 3A (BPS Bioscience #60188): Thaw medium 3 (BPS Bioscience, #60186) plus 1 mg/ml of Geneticin (Thermo Fisher, #11811031) and 500 µg/ml of Hygromycin B (Thermo Fisher, #10687010) to ensure recombinant expression.

Cells should be grown at 37°C with 5% CO₂ using Growth Medium 3A. BCMA / Luciferase cells should exhibit a typical cell division time of ~24 hours.

OUR PRODUCTS ARE FOR RESEARCH USE ONLY. NOT FOR DIAGNOSTIC OR THERAPEUTIC USE.

To place your order, please contact us by Phone **1.858.202.1401** Fax **1.858.481.8694**

Or you can Email us at: info@bpsbioscience.com

Please visit our website at: www.bpsbioscience.com



6042 Cornerstone Court W, Ste B
San Diego, CA 92121
Tel: 1.858.202.1401
Fax: 1.858.481.8694
Email: info@bpsbioscience.com

It is recommended to quickly thaw the frozen cells from liquid nitrogen in a 37°C water bath, transfer to a tube containing 10 ml of Thaw Medium 3 (**no Geneticin or Hygromycin B**), spin the cells down, remove the supernatant, and then re-suspend the cells in pre-warmed Thaw Medium 3 (**no Geneticin or Hygromycin B**). Then transfer the re-suspended cells to a T25 flask and culture in a 37°C CO₂ incubator overnight. The next day, replace the medium with fresh Thaw Medium 3 (**no Geneticin or Hygromycin B**) and continue growing in a CO₂ incubator at 37°C until the cells are ready to be split. Cells should be split before they reach complete confluence. After the first passage, switch to Growth Medium 3A (**contains Geneticin and Hygromycin B**).

To passage the cells, rinse the cells with Phosphate Buffered Saline (PBS), detach the cells from the culture vessel with 0.05% Trypsin/EDTA, and add Growth Medium 3A and transfer to a tube. Next, spin the cells down, remove the supernatant, and then re-suspend the cells and seed appropriate aliquots of the cell suspension into new culture vessels. Suggested sub-cultivation ratios: 1:10 to 1:20 twice a week.

To freeze the cells down, rinse the cells with Phosphate Buffered Saline (PBS), and detach the cells from the culture vessel with 0.05% Trypsin/EDTA. After detachment, add Thaw Medium 3 (**no Geneticin or Hygromycin B**) and count the cells, then transfer to a tube, spin the cells down, and resuspend in 4°C Freezing Medium (10% DMSO + 90% FBS) at $\sim 2 \times 10^6$ cells/ml. Dispense 1 ml of cell aliquots into each cryogenic vial. Place vials in an insulated container for slow cooling and store at -80°C overnight. Transfer to liquid nitrogen the next day for storage. It is recommended to expand the cells and freeze down more than 10 vials of cells for future use at early passages.

Mycoplasma Testing

This cell line has been screened using the MycoAlert™ Mycoplasma Detection Kit (Lonza, #LT07-118) to confirm the absence of Mycoplasma contamination. MycoAlert Assay Control Set (Lonza, #LT07-518) was used as a positive control.

Materials Required by Not Supplied

- Thaw Medium 3 (BPS Bioscience, #60184)
- Growth Medium 3A (BPS Bioscience, #60188)
- 96-well tissue culture-treated white clear-bottom assay plate
- ONE-Step luciferase assay system (BPS Bioscience, #60690) or other luciferase reagent for measuring firefly luciferase activity
- Luminometer

OUR PRODUCTS ARE FOR RESEARCH USE ONLY. NOT FOR DIAGNOSTIC OR THERAPEUTIC USE.

To place your order, please contact us by Phone **1.858.202.1401** Fax **1.858.481.8694**

Or you can Email us at: info@bpsbioscience.com

Please visit our website at: www.bpsbioscience.com

Figure 1. FACS analysis of cell surface expression of BCMA in BCMA / Luciferase CHO recombinant cells.

Flow cytometry using PE-conjugated anti-human BCMA antibody (Biolegend, #357503) to detect BCMA surface expression on either the BCMA / Luciferase recombinant cells (brown) or parental CHO-K1 cells (green).

FACS analysis: BCMA / Luciferase CHO recombinant cells with PE labeled anti-BCMA

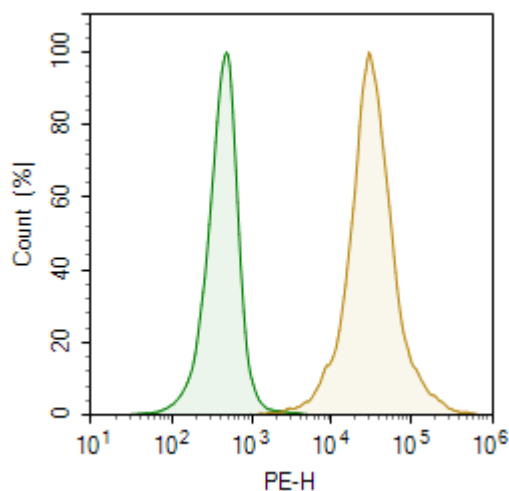
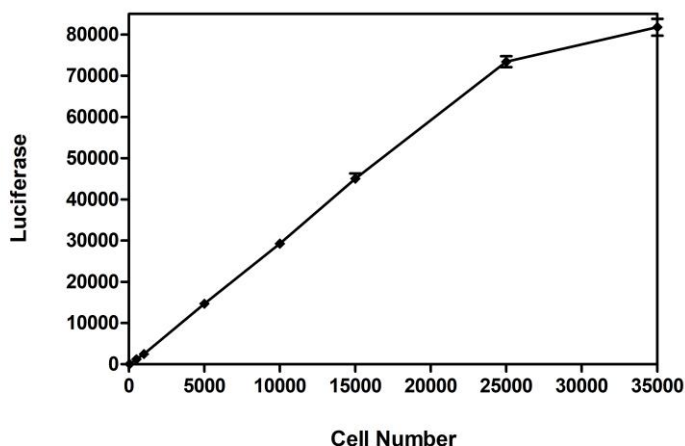


Figure 2. Luciferase activity of BCMA / Luciferase CHO recombinant cells.

BCMA / Luciferase CHO recombinant cells were seeded in a 96-well plate at various densities. The next day, luciferase activity was measured using the ONE-Step luciferase assay system (BPS Bioscience, #60690).



OUR PRODUCTS /
 To place yo

THERAPEUTIC USE.
 1.8.481.8694

Or you can Email us at: info@bpsbioscience.com
 Please visit our website at: www.bpsbioscience.com



6042 Cornerstone Court W, Ste B
San Diego, CA 92121
Tel: 1.858.202.1401
Fax: 1.858.481.8694
Email: info@bpsbioscience.com

Sequence

Human BCMA sequence (accession number NM_001192)

MLQ MAGQCSQNEYFD SLLHACIPCQLRCS SNT PPLTCQRYCNASVTNSVKGTNAILWTC LGLSLIISLAV
FVLMFLLRKINSEPLKDEFKNTG SGLLGMANIDLEKSR TGDEIILPRGLEYTVEECTCECIKSKPKVDSD
HCFPLPAMEEGATILVTTKTNDYCKSLPAALSATEIEKSISAR

License Disclosure

Purchase of this cell line grants you with a 10-year license to use this cell line in your immediate laboratory, for research use only. This license does not permit you to share, distribute, sell, sublicense, or otherwise make the cell line available for use to other laboratories, departments, research institutions, hospitals, universities, or biotech companies. The license does not permit use of this cell line in humans or for therapeutic or drug use. The license does not permit modification of the cell line in any way. Inappropriate use or distribution of this cell line will result in revocation of the license and result in an immediate cease of sales and distribution of BPS products to your laboratory. BPS does not warrant the suitability of the cell line for any particular use, and does not accept any liability in connection with the handling or use of the cell line. Modifications of this cell line, transfer to another facility, or commercial use of the cells may require a separate license and additional fees; contact sales@bpsbioscience.com for details. Publications using this cell line should reference BPS Bioscience, Inc., San Diego.

Related Products

Product	Cat. #	Size
BCMA-CHO Recombinant Cell Line (Medium Expression)	79500-M	2 vials
BCMA-CHO Recombinant Cell Line (Low Expression)	79500-L	2 vials
Human BCMA (CD269)	90105-A	5 µg
Human BCMA (CD269)	90105-B	20 µg
Human BCMA, Fc-Fusion, Avi-Tag HiP™	79465	100 µg
Human BCMA, Fc-fusion (IgG1), Avi-Tag, Biotin-Labeled HiP™	79467	50 µg
Human BAFF	90100-1	10 µg
Human BAFF	90100-2	100 µg
Human BAFF	90100-3	1 mg
Human BAFF-R(CD268)	90103-A	10 µg
Human BAFF-R(CD268)	90103-B	50 µg
Anti-BCMA Antibody	100173-1	50 µg
Anti-BCMA Antibody	100173-2	100 µg
BAFF:BCMA[Biotinylated] Inhibitor Screening Assay Kit	79667	96 rxns

OUR PRODUCTS ARE FOR RESEARCH USE ONLY. NOT FOR DIAGNOSTIC OR THERAPEUTIC USE.

To place your order, please contact us by Phone **1.858.202.1401** Fax **1.858.481.8694**

Or you can Email us at: info@bpsbioscience.com

Please visit our website at: www.bpsbioscience.com