



# SZABO SCANDIC

Part of Europa Biosite

## Produktinformation



Forschungsprodukte & Biochemikalien



Zellkultur & Verbrauchsmaterial



Diagnostik & molekulare Diagnostik



Laborgeräte & Service

Weitere Information auf den folgenden Seiten!  
See the following pages for more information!



### Lieferung & Zahlungsart

siehe unsere [Liefer- und Versandbedingungen](#)

### Zuschläge

- Mindermengenzuschlag
- Trockeneiszuschlag
- Gefahrgutzuschlag
- Expressversand

### SZABO-SCANDIC HandelsgmbH

Quellenstraße 110, A-1100 Wien

T. +43(0)1 489 3961-0

F. +43(0)1 489 3961-7

[mail@szabo-scandic.com](mailto:mail@szabo-scandic.com)

[www.szabo-scandic.com](http://www.szabo-scandic.com)

[linkedin.com/company/szaboscandic](https://www.linkedin.com/company/szaboscandic) 

## Data Sheet

### Cathepsin L, His Tag

Human, Recombinant, C-terminal His-Tag

**Catalog #:** 80005

**Lot #:** 170620-1

**Conc.:** 0.21 mg/ml

**Formulated in:** 40 mM Tris-HCl pH 8.0, 110 mM NaCl, 2.2 mM KCl, 250 mM Imidazole and 20% glycerol

**Stability:** At least 6 months at -80°C. Avoid freeze/thaw cycles. Protein may be diluted to  $\geq 100 \mu\text{g/ml}$  in PBS + glycerol and stored at -80°C.

**References:**

1. Jean D. *et al.*, *Biochem. J.* **413** (1), 125-134 (2008).
2. Abboud-Jarrous G. *et al.*, *J. Biol. Chem.* **283** (26), 18167-18176 (2008).

**Description:**

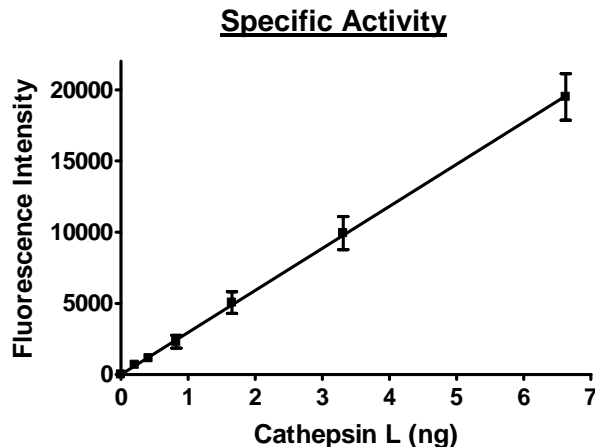
Human cathepsin L (GenBank Accession No. NM\_001912), amino-acids 18-333 (end), with C-terminal His-tag, MW = 37 kDa, expressed in FreeStyle 293-F cells.

**Specific Activity:** 6000 pmol/min/ $\mu\text{g}$ .

**Assay Description:** The enzyme reactions were conducted in 50mM MES buffer pH5.0, 100mM NaCl, 5mM DTT and 20 $\mu\text{M}$  substrate (Z-Leu-Arg-AMC) 30 minutes at room temperature. The fluorescence intensity was measured at exc360/em460.

**Application:** Useful for activation of DPP1 (Cathepsin C).

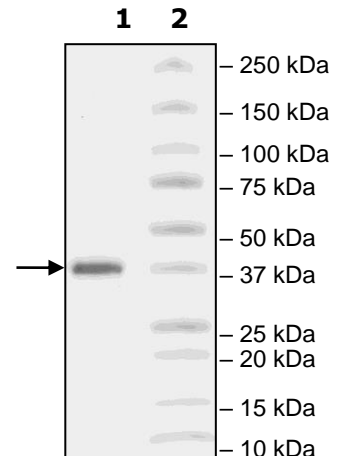
### Quality Assurance



**4-20% SDS-PAGE  
Coomassie staining**

**Lane 1:**  
2  $\mu\text{g}$  Cathepsin L  
**Lane 2:**  
Protein Marker

**MW:** 37 kDa  
**Purity:**  $\geq 90\%$



OUR PRODUCTS ARE FOR RESEARCH USE ONLY. NOT FOR DIAGNOSTIC OR THERAPEUTIC USE.

To place your order, please contact us by Phone **1.858.829.3082** Fax **1.858.481.8694**

Or you can Email us at: [info@bpsbioscience.com](mailto:info@bpsbioscience.com)

Please visit our website at: [www.bpsbioscience.com](http://www.bpsbioscience.com)