



SZABO SCANDIC

Part of Europa Biosite

Produktinformation



Forschungsprodukte & Biochemikalien



Zellkultur & Verbrauchsmaterial



Diagnostik & molekulare Diagnostik



Laborgeräte & Service

Weitere Information auf den folgenden Seiten!
See the following pages for more information!



Lieferung & Zahlungsart

siehe unsere [Liefer- und Versandbedingungen](#)

Zuschläge

- Mindermengenzuschlag
- Trockeneiszuschlag
- Gefahrgutzuschlag
- Expressversand

SZABO-SCANDIC HandelsgmbH

Quellenstraße 110, A-1100 Wien

T. +43(0)1 489 3961-0

F. +43(0)1 489 3961-7

mail@szabo-scandic.com

www.szabo-scandic.com

[linkedin.com/company/szaboscandic](https://www.linkedin.com/company/szaboscandic) 

Data Sheet

Caspase-6

Human, recombinant, C-terminal His-tag
 Catalog #: 80113
 Lot #: 130222-2 Conc.: 0.33 mg/ml

Formulated in: 40 mM Tris-HCl, pH 8.0,
 110 mM NaCl, 2.2 mM KCl, 320 mM
 imidazole, 0.01% Tween-20, and 20%
 glycerol.

Stability: >6 months at -80°C

References:

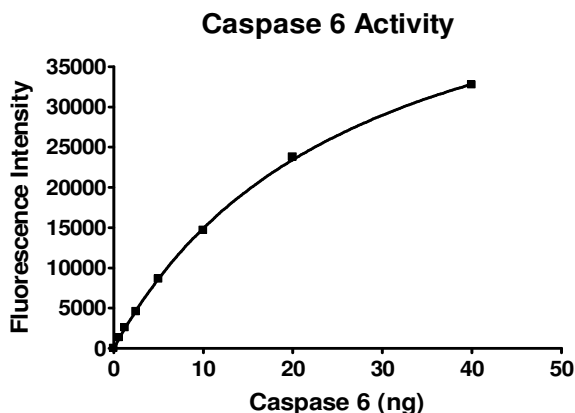
1. Halawani, D., *et al.*, *J Neurosci.*
 2010 Apr 28;**30(17)**:6132-42.
2. LeBlanc, A., *et al.*, *J Biol Chem.*
 1999 Aug 13;**274(33)**:23426-36.

Description: Human Caspase 6 (CASP6),
 GenBank Accession No. NM_001226), full
 length, amino-acids 1-293 (end), with C-
 terminal His-tag, expressed in an *E. coli*
 expression system. Pro-caspase-6 is
 activated by autocleavage to yield 20 kDa
 and 18 kDa proteins (large subunit) and an
 11 kDa small subunit (His-tag) that dimerize
 to form the active enzyme.

Specific Activity: 1,720 pmol/min/μg.
 Assay conditions: 50 mM HEPES, pH 7.2, 50
 mM NaCl, 10 mM EDTA, 0.1% Chaps, 5%
 glycerol, 10 mM DTT, and 20 μM Caspase 6
 substrate. Incubate for 30 minutes at room
 temperature. Fluorescence intensity is
 measured at exc380/em505 nm.

Application: Useful for the study of enzyme
 kinetics, screening inhibitors, and selectivity
 profiling.

Quality Assurance



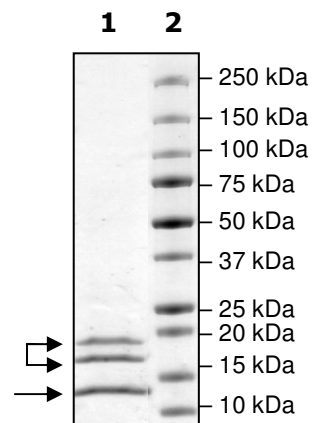
**4-20% SDS-PAGE
 Coomassie staining**

Lane 1:
 2.2 μg Caspase 6

Lane 2:
 Protein Marker

Purity: ≥93%

MW:
 Large subunits:
 20 kDa, 18 kDa
 Small subunit: 11 kDa



OUR PRODUCTS ARE FOR RESEARCH USE ONLY. NOT FOR DIAGNOSTIC OR THERAPEUTIC USE.

To place your order, please contact us by Phone **1.858.829.3082** Fax **1.858.481.8694**
 Or you can Email us at: info@bpsbioscience.com
 Please visit our website at: www.bpsbioscience.com



6044 Cornerstone Court West, Suite E
San Diego, CA 92121
Tel: 1.858.829.3082
Fax: 1.858.481.8694
Email: info@bpsbioscience.com

Sequence:

MSSASGLRRGHPAGGEENMTETDAFYKREMFDPAEKYKMDHRRRGIALIFNHERFF
WHLTLPERRGTCADRDNLTRRFSDLGFEVKCFNDLKAELLKIHEVSTVSHADADC
FVCVFLSHGEGNHIYAYDAKIEIQTLTGLFKGDKCHSLVGKPKIFIIQACRGNQHDVPI
PLDVVDNQTEKLDNITEVDAASVYTLPAGADFLMCYSVAEGYYSHRETVNGSWYIQ
DLCEMLGKYGSSLEFTELLTLVNRKVSQRRVDFCKDPSAIGKKQVPCFASMLTKKLH
FFPKSNHHHHHH

OUR PRODUCTS ARE FOR RESEARCH USE ONLY. NOT FOR DIAGNOSTIC OR THERAPEUTIC USE.

To place your order, please contact us by Phone **1.858.829.3082** Fax **1.858.481.8694**
Or you can Email us at: info@bpsbioscience.com
Please visit our website at: www.bpsbioscience.com