



# SZABO SCANDIC

Part of Europa Biosite

## Produktinformation



Forschungsprodukte & Biochemikalien



Zellkultur & Verbrauchsmaterial



Diagnostik & molekulare Diagnostik



Laborgeräte & Service

Weitere Information auf den folgenden Seiten!  
See the following pages for more information!



### Lieferung & Zahlungsart

siehe unsere [Liefer- und Versandbedingungen](#)

### Zuschläge

- Mindermengenzuschlag
- Trockeneiszuschlag
- Gefahrgutzuschlag
- Expressversand

### SZABO-SCANDIC HandelsgmbH

Quellenstraße 110, A-1100 Wien

T. +43(0)1 489 3961-0

F. +43(0)1 489 3961-7

[mail@szabo-scandic.com](mailto:mail@szabo-scandic.com)

[www.szabo-scandic.com](http://www.szabo-scandic.com)

[linkedin.com/company/szaboscandic](https://www.linkedin.com/company/szaboscandic) 

## Data Sheet

### Caspase-8

Human, recombinant, C-terminal His-tag  
 Catalog #: 80114  
 Lot #: 130215-2      Conc.: 0.37 mg/ml

**Formulated in:** 40 mM Tris-HCl, pH 8.0,  
 110 mM NaCl, 2.2 mM KCl, 200 mM  
 imidazole, 3 mM DTT and 20% glycerol.

**Stability:** >6 months at -80 °C

**References:**

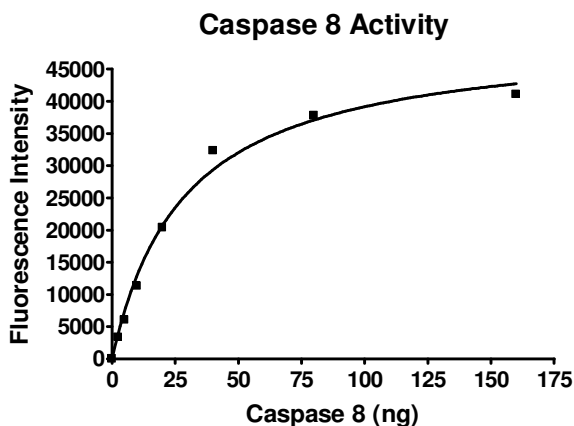
1. MacPherson, G., *et al.*, *J. Natl. Cancer Inst.* 2004 Dec 15; **96(24)**:1866-9.
2. Sun, T., *et al.*, *Nat Genet.* 2007 May; **39(5)**:605-13.
3. Hoffman, J.C., *et al.* *Mol. Cell. Biol.* 2009 Aug; **29(16)**: 4431-4440.

**Description:** Human Caspase 8 (CASP8), GenBank Accession No. NM\_001228), amino-acids 200 - 496 (end), with C-terminal His-tag, MW=34.5 kDa, expressed in an *E. coli* cell expression system. Procaspase-8 is autocleaved between the prodomain and large protease subunit (p18). The cleavage product, p30, contains both the large (p18) and small (p10 [His-tag]) protease subunits. p30 is further processed to the p18 and p10 subunits, which dimerize to form active enzyme.

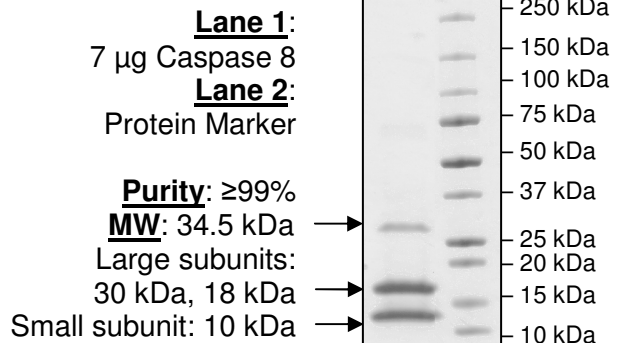
**Specific Activity:** 1,145 pmol/min/μg.  
 Assay conditions: 50 mM HEPES, pH 7.2, 50 mM NaCl, 10 mM EDTA, 0.1% Chaps, 5% glycerol, 10 mM DTT, and 20 μM Caspase 8 substrate. Incubate for 30 minutes at room temperature. Fluorescence intensity is measured at exc380/em505 nm.

**Application:**  
 Useful for the study of enzyme kinetics, screening inhibitors, and selectivity profiling.

### Quality Assurance



**4-20% SDS-PAGE  
 Coomassie staining**



OUR PRODUCTS ARE FOR RESEARCH USE ONLY. NOT FOR DIAGNOSTIC OR THERAPEUTIC USE.

To place your order, please contact us by Phone **1.858.829.3082** Fax **1.858.481.8694**  
 Or you can Email us at: [info@bpsbioscience.com](mailto:info@bpsbioscience.com)  
 Please visit our website at: [www.bpsbioscience.com](http://www.bpsbioscience.com)



6044 Cornerstone Court West, Suite E  
San Diego, CA 92121  
Tel: 1.858.829.3082  
Fax: 1.858.481.8694  
Email: [info@bpsbioscience.com](mailto:info@bpsbioscience.com)

**Sequence:**

MNKSLLKIINDYEEFSKGEELCGVMTISDSPREQDSESQTLDKVYQMKS KPRGYCLIIN  
NHNFAKAREKVPKLHSIRDRNGTHLDAGALTTTFFELHFEIKPHDDCTVEQIYEILKIYQ  
LMDHSNMDCFICCILSHGDKGIIYGTGQEAPIYELTSQFTGLKCPSLAGKPKVFFIQA  
CQGDNYQKGIPVETDSEEQPYLEMDLSSPQTRYIPDEADFLGMATVNNCVSYRNPA  
EGTWYIQSLCQSLRERCPRGDDILTILTEVNYEVS NKDDKKNMGKQMPQPTFTLRKK  
LVFPSDHHHHHH

OUR PRODUCTS ARE FOR RESEARCH USE ONLY. NOT FOR DIAGNOSTIC OR THERAPEUTIC USE.

To place your order, please contact us by Phone **1.858.829.3082** Fax **1.858.481.8694**  
Or you can Email us at: [info@bpsbioscience.com](mailto:info@bpsbioscience.com)  
Please visit our website at: [www.bpsbioscience.com](http://www.bpsbioscience.com)