



# SZABO SCANDIC

Part of Europa Biosite

## Produktinformation



Forschungsprodukte & Biochemikalien



Zellkultur & Verbrauchsmaterial



Diagnostik & molekulare Diagnostik



Laborgeräte & Service

Weitere Information auf den folgenden Seiten!  
See the following pages for more information!



### Lieferung & Zahlungsart

siehe unsere [Liefer- und Versandbedingungen](#)

### Zuschläge

- Mindermengenzuschlag
- Trockeneiszuschlag
- Gefahrgutzuschlag
- Expressversand

### SZABO-SCANDIC HandelsgmbH

Quellenstraße 110, A-1100 Wien

T. +43(0)1 489 3961-0

F. +43(0)1 489 3961-7

[mail@szabo-scandic.com](mailto:mail@szabo-scandic.com)

[www.szabo-scandic.com](http://www.szabo-scandic.com)

[linkedin.com/company/szaboscandic](https://www.linkedin.com/company/szaboscandic) 

## Data Sheet

### Renin, His-Tag

Human, Recombinant, C-terminal His-tag  
**Catalog #:** 80200  
**Lot #:** 161221                      **Conc.:** 0.82 mg/ml

**Formulated in:** 40 mM Tris-HCl, pH 8.0, 110 mM NaCl, 2.2 mM KCl, 200 mM Imidazole and 20% glycerol.

**Stability:** At least 6 months at  $-80^{\circ}\text{C}$ . Avoid freeze/thaw cycles.

**References:**

1. Cho, M.J., *et al.*, *J Pediatr Endocrinol Metab.* 2011; **24(11-12)**:1085 – 1087.
2. Schnermann, J., *et al.*, *Kidney Int.* 2012 Mar; **81(6)**: 529 – 538.

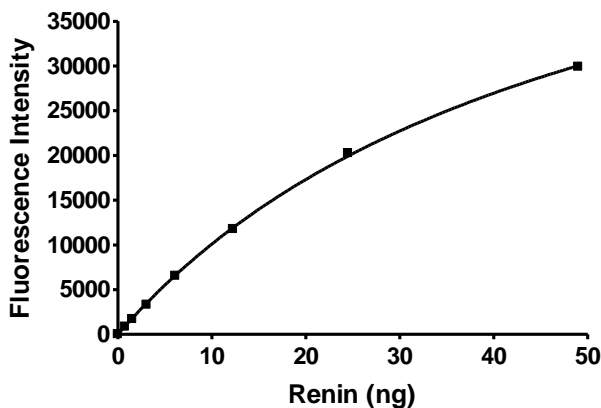
**Description:** Human Activated Renin, also known as Angiotensinogenase, Renin Protein, Renin protease, renin angiotensin aldosterone system, and renin angiotensin aldosterone, GenBank Accession No. NM\_000537, a.a. 67–406(end) with C-terminal His-tag, expressed in a HEK293 expression system. MW=39 kDa.

**Specific Activity:** 240 pmol/min/ $\mu\text{g}$   
 Assay conditions: 50 mM Tris-HCl, pH 7.4, 100 mM NaCl, 0.05% Tween 20, 7.5  $\mu\text{M}$  renin substrate, 30 min, room temperature.

**Applications:** Useful for the study of enzyme kinetics, screening inhibitors, and selectivity profiling.

### Quality Assurance

Specific Activity



4-20% SDS-PAGE  
Coomassie staining

**Lane 1:**  
3 $\mu\text{g}$  Renin  
**Lane 2:**  
Protein Marker  
**MW:** 39 kDa  
**Purity:**  $\geq 84\%$

