



SZABO SCANDIC

Part of Europa Biosite

Produktinformation



Forschungsprodukte & Biochemikalien



Zellkultur & Verbrauchsmaterial



Diagnostik & molekulare Diagnostik



Laborgeräte & Service

Weitere Information auf den folgenden Seiten!
See the following pages for more information!



Lieferung & Zahlungsart

siehe unsere [Liefer- und Versandbedingungen](#)

Zuschläge

- Mindermengenzuschlag
- Trockeneiszuschlag
- Gefahrgutzuschlag
- Expressversand

SZABO-SCANDIC HandelsgmbH

Quellenstraße 110, A-1100 Wien

T. +43(0)1 489 3961-0

F. +43(0)1 489 3961-7

mail@szabo-scandic.com

www.szabo-scandic.com

[linkedin.com/company/szaboscandic](https://www.linkedin.com/company/szaboscandic) 

Data Sheet

Renin (Rat)

Rat, recombinant, C-terminal HIS tag
Catalog #: 80201
Lot#: 120809-GC **Conc.:** 1.26 mg/ml

Formulated in: 40 mM Tris-HCl, pH 8.0,
 110 mM NaCl, 2.2 mM KCl, and 20%
 Glycerol.

Stability: >6 months at -80°C

References:

1. Kedrah, AE., *et al.*, *Kidney Blood Press Res.* 2012 Jun 6;**35(6)**:425-430.
2. Burnham, CE., *et al.*, *Proc Natl Acad Sci USA.* 1987 Aug;**84(16)**:5605-5609.

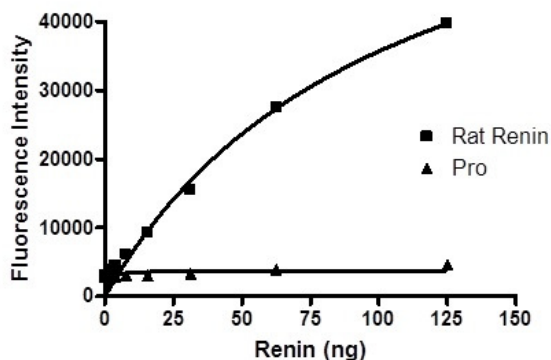
Description: Rat, Activated Renin (GenBank Accession No. NM_012642), amino acids 65 – 402 (end) with C-terminal HIS tag, MW=38.5 kDa, expressed in a HEK293 cell expression system.

Assay Conditions: The assay was performed following the renin assay kit (Anaspec, #72140). Enzymatic reactions were conducted at 37°C for 60 minutes in a 100 µl mixture containing assay buffer, 2.5 µM 5-FAM/QXL™ 520 FRET Peptide, and rat Renin enzyme. Fluorescence intensity was measured at an excitation of 490 nm and an emission of 520 nm using a Tecan Infinite M1000 microplate reader.

Application: Useful for the study of enzyme kinetics, screening inhibitors, and selectivity profiling.

Quality Assurance

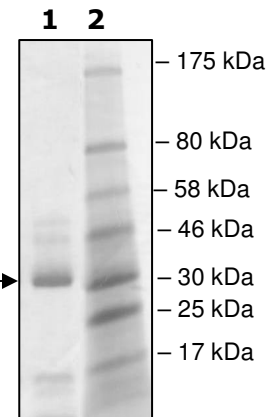
Rat Renin Activity



10 % SDS-PAGE Coomassie staining

Lane 1:
 2 µg Rat Renin
Lane 2:
 Protein Marker
 BioLabs (#P7708L)

MW: 38.5 kDa →
Purity: ≥90%





6044 Cornerstone Court West, Suite E
San Diego, CA 92121
Tel: 1.858.829.3082
Fax: 1.858.481.8694
Email: info@bpsbioscience.com

Protein Sequence:

SSFTNVTSPVVL TNYLDTQYYGEIGIGTPSQTFKVFIDTGSANLWVPSTKCGPLYTACEI
HNLYDSSESSSYMENGTEFTIHYGSGKVKGFLSQDVVTVGGIIVTQTFGEVTELPLIPF
MLAKFDGVLGMGFPAQAVDGVIPVFDHILSQRVLKEEVFSVYYSRESHLLGGEVVLG
GSDPQHYQGNFHYVSISKAGSWQITMKGVSVPATLLCEEGCMAVVDTGTSYISGPT
SSLQLIMQALGVKEKRANNYVVNCSQVPTLPDISFYLGGRTYTLSNMDYVQKNPFRN
DDLCILALQGLDIPPPTGPVWVLGATFIRKFYTEFDRHNNRIGFALARHHHHHHHHHH

OUR PRODUCTS ARE FOR RESEARCH USE ONLY. NOT FOR DIAGNOSTIC OR THERAPEUTIC USE.
To place your order, please contact us by Phone **1.858.829.3082** Fax **1.858.481.8694**
Or you can Email us at: info@bpsbioscience.com
Please visit our website at: www.bpsbioscience.com