



SZABO SCANDIC

Part of Europa Biosite

Produktinformation



Forschungsprodukte & Biochemikalien



Zellkultur & Verbrauchsmaterial



Diagnostik & molekulare Diagnostik



Laborgeräte & Service

Weitere Information auf den folgenden Seiten!
See the following pages for more information!



Lieferung & Zahlungsart

siehe unsere [Liefer- und Versandbedingungen](#)

Zuschläge

- Mindermengenzuschlag
- Trockeneiszuschlag
- Gefahrgutzuschlag
- Expressversand

SZABO-SCANDIC HandelsgmbH

Quellenstraße 110, A-1100 Wien

T. +43(0)1 489 3961-0

F. +43(0)1 489 3961-7

mail@szabo-scandic.com

www.szabo-scandic.com

[linkedin.com/company/szaboscandic](https://www.linkedin.com/company/szaboscandic) 

Data Sheet

MME

Human, recombinant, N-terminal His-tag

Catalog #: 80212

Lot#: 131001 **Conc.:** 0.19 mg/ml

Formulated in: 40 mM Tris-HCl pH 8.0, 110 mM NaCl, 2.2 mM KCl, 200 mM imidazole, and 20% glycerol.

Stability: >6 months at -80°C. Avoid freeze/thaw cycles.

References:

1. Zhou, L., *et al.*, *Am J Transl Res.* 2013 Sep 25;**5(6)**:608-21.
2. Pereira, N.L., *et al.* *J. Mol. Cell Cardiol.* 2010 Nov;**49(5)**:864-74.

Description:

Human membrane metallo-endopeptidase (MME), also known as CALLA, neutral endopeptidase (NEP), CD10, and Neprilysin (GenBank Accession No. NM_000902.3), a.a. 52-750(end), with N-terminal His-tag, MW= 81kDa, expressed in HEK293 cell expression system.

Application:

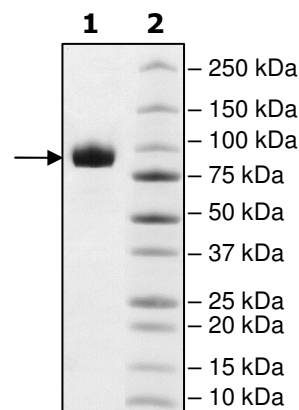
Useful for the study of enzyme kinetics, screening inhibitors, and selectivity profiling.

Quality Assurance

4-20% SDS-PAGE Coomassie staining

Lane 1:
3 µg MME
Lane 2:
Protein Marker

MW: 81 kDa
Purity: ≥90%



OUR PRODUCTS ARE FOR RESEARCH USE ONLY. NOT FOR DIAGNOSTIC OR THERAPEUTIC USE.

To place your order, please contact us by Phone **1.858.829.3082** Fax **1.858.481.8694**

Or you can Email us at: info@bpsbioscience.com

Please visit our website at: www.bpsbioscience.com



6044 Cornerstone Court West, Suite E
San Diego, CA 92121
Tel: 1.858.829.3082
Fax: 1.858.481.8694
Email: info@bpsbioscience.com

Sequence:

HHHHHHYDDGICKSSDCIKSAARLIQNMDATTEPCTDFFKYACGGWLKRNVIPETSSRY
GNFDILRDELEVVLKDVLPKTE DIVAVQKAKALYRSCINESAIDSRGGEPLLKLLPDIY
GWPVATENWEQKYGASWTAEKAI AQLNSKYGKKVLINL FVGTDDKNSVNHVIHIDQPR
LGLPSRDYYECTGIYKEACTAYVDFMISVARLIRQEERLPIDENQLALEMNKVMLEKEI
ANATAKPEDRNDPMLLYNKMTLAQIQNNFSLEINGKPF SWLNFTNEIMSTVNISITNEED
VVVYAPEYLTKLKPILTKYSARDLQNLMSWRFIMDLVSSLSR TYKESRNAFRKALYGT
SETATWRRRCANYVNGNMENAVGRLYVEAAFAGESKHVVEDLIAQIREVFIQTLDDL
MDAETKKRAEEKALAIKERIGYPDDIVSNDNKLNNEYLELNYKEDEYFENIIQNLKFSQS
KQLKKLREKVDKDEWISGA AVVNAFYSSGRNQIVFPAGILQPPFFSAQQSNSLNYGGIG
MVGHEITHGFDDNGRNFNKDGLVDWWTQQSASNFK EQSQCMVYQYGNFSWDLAG
GQHLNGINTLGENIADNGGLGQAYRAYQNYIKKNGEEKLLPGLDLN HKQLFFLNFAQV
WCGTYRPEYAVNSIKTDVHSPGNFRIIGTLQNSAEFSEAFHCRKNSYMNPEKKCRVW

OUR PRODUCTS ARE FOR RESEARCH USE ONLY. NOT FOR DIAGNOSTIC OR THERAPEUTIC USE.
To place your order, please contact us by Phone **1.858.829.3082** Fax **1.858.481.8694**
Or you can Email us at: info@bpsbioscience.com
Please visit our website at: www.bpsbioscience.com