



SZABO SCANDIC

Part of Europa Biosite

Produktinformation



Forschungsprodukte & Biochemikalien



Zellkultur & Verbrauchsmaterial



Diagnostik & molekulare Diagnostik



Laborgeräte & Service

Weitere Information auf den folgenden Seiten!
See the following pages for more information!



Lieferung & Zahlungsart

siehe unsere [Liefer- und Versandbedingungen](#)

Zuschläge

- Mindermengenzuschlag
- Trockeneiszuschlag
- Gefahrgutzuschlag
- Expressversand

SZABO-SCANDIC HandelsgmbH

Quellenstraße 110, A-1100 Wien

T. +43(0)1 489 3961-0

F. +43(0)1 489 3961-7

mail@szabo-scandic.com

www.szabo-scandic.com

[linkedin.com/company/szaboscandic](https://www.linkedin.com/company/szaboscandic) 

Data Sheet

MMP1

Human, recombinant, C-terminal His-tag
 Catalog #: 80214
 Lot #: 130730 Conc.: 1.35 mg/ml

Formulated in: 40 mM Tris-HCl, pH 8.0, 110 mM NaCl, 2.2 mM KCl, 200 mM imidazole, and 20% glycerol.

Stability: >6 months at -80°C. Avoid freeze/thaw cycles.

References:

1. Wenham, R.M., *et al.*, *J. Soc. Gynecol. Investig.* 2003 Sep;**10(6)**:381-7.
2. Li, X., *et al.*, *J. Cancer Res. Clin. Oncol.* 2013 Sep;**139(9)**:1433-47.

Description: Human matrix metalloproteinase-1 (MMP1), also known as CLG, Interstitial Collagenase, Fibroblast Collagenase, and EC 3.4.24.7 (GenBank Accession No. NM_002421), a.a. 20-469 (end), with C-terminal His-tag, MW=53 kDa, expressed in an HEK293 cell expression system.

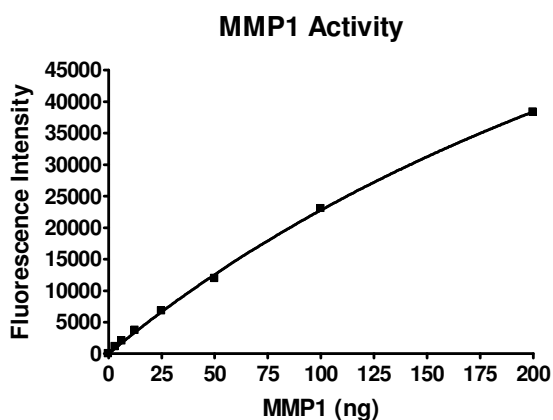
Specific Activity: 105 pmole/min/μg

Activation: This is a proform enzyme and requires activation prior to testing activity. Dilute the enzyme to 100 ng/ml in a solution containing 50 mM HEPES, pH 7.4, 10 mM CaCl₂, 0.05% Brij-35, and 1 mM APMA (amino-phenyl mercuric acetate). Incubate at 37°C for 2 hours. Assay conditions: Reaction mixture with 10 μM 390 MMP substrate 1 (Anaspec). Incubate for 30 minutes at room temperature. Fluorescence intensity is measured at exc328/em393.

Application: Useful for the study of enzyme kinetics, screening inhibitors, and selectivity profiling.

Quality Assurance

Specific Activity

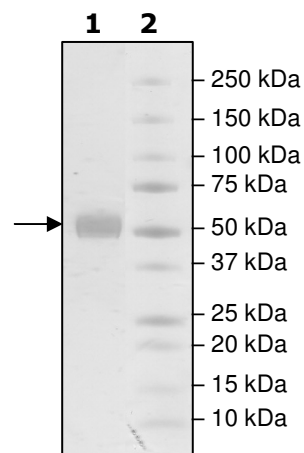


4-20% SDS-PAGE Coomassie staining

Lane 1:
2.4 μg MMP1

Lane 2:
Protein Marker

MW: 53 kDa
Purity: ≥90%



OUR PRODUCTS ARE FOR RESEARCH USE ONLY. NOT FOR DIAGNOSTIC OR THERAPEUTIC USE.

To place your order, please contact us by Phone **1.858.829.3082** Fax **1.858.481.8694**

Or you can Email us at: info@bpsbioscience.com

Please visit our website at: www.bpsbioscience.com



6044 Cornerstone Court West, Suite E
San Diego, CA 92121
Tel: 1.858.829.3082
Fax: 1.858.481.8694
Email: info@bpsbioscience.com

Sequence:

FPATLETQEQDVDLVQKYLEKYYNLKN DGRQVEKRRNSGPVVEK LKQMQE FFLK V
TGKPDAETLKVMKQPRCGVPDVAQFVLTEGNPRWEQTHLTYRIENYTPDLPRADVDH
AIEKAFQLWSNV TPLTFTKVSEGGADIMISFVRGDHRD NSPFDGPGGNLAHAFQPGP
GIGGDAHFD EDERWTN NFREYNLHRVA AHELGHSLGLSHSTDIGALMYP SYTFSGDV
QLAQDDIDG IQAIYGRSQNPVQPIGPQTPKACDSKLTFD AITTIRGEVMFFKDRFY MRT
NPFYPEVELNFISVFWPQLPNGLEAAYEFADRDEV RFFKGNKYWAVQQQ NVLHGYP
KDIYSSFGFPRTVKHIDAALSEENTGKTYFFVANKY WRYDEYKRSM DPGYPMIAHDF
PGIGHKVD AVFMKDGFFYFFHGTRQYKFDPKTKRIL TLQKANSWFNCRKN **HHHHHHH**
HHH

OUR PRODUCTS ARE FOR RESEARCH USE ONLY. NOT FOR DIAGNOSTIC OR THERAPEUTIC USE.
To place your order, please contact us by Phone **1.858.829.3082** Fax **1.858.481.8694**
Or you can Email us at: info@bpsbioscience.com
Please visit our website at: www.bpsbioscience.com