



# SZABO SCANDIC

Part of Europa Biosite

## Produktinformation



Forschungsprodukte & Biochemikalien



Zellkultur & Verbrauchsmaterial



Diagnostik & molekulare Diagnostik



Laborgeräte & Service

Weitere Information auf den folgenden Seiten!  
See the following pages for more information!



### Lieferung & Zahlungsart

siehe unsere [Liefer- und Versandbedingungen](#)

### Zuschläge

- Mindermengenzuschlag
- Trockeneiszuschlag
- Gefahrgutzuschlag
- Expressversand

### SZABO-SCANDIC HandelsgmbH

Quellenstraße 110, A-1100 Wien

T. +43(0)1 489 3961-0

F. +43(0)1 489 3961-7

[mail@szabo-scandic.com](mailto:mail@szabo-scandic.com)

[www.szabo-scandic.com](http://www.szabo-scandic.com)

[linkedin.com/company/szaboscandic](https://www.linkedin.com/company/szaboscandic) 

## Data Sheet

### Ubch6 (UBE2E1)

Human, recombinant, N-terminal His-tag

Catalog #: 80316

Lot# 91119

Conc. 1.22 mg/ml

**Formulated in:** 40 mM Tris-HCl, pH 8.0,  
 110 mM NaCl, 2.2 mM KCl, 200 mM  
 imidazole, 20% glycerol, and 3 mM DTT.

**Stability:** >6 months at -80°C

**References:**

- Sommer, T., *et al.* 1993. *Nature* **365** (6442): 176-9.
- Yang, M. *et al.* 1997. *J. Biol. Chem.* **272** : 1970-1975.

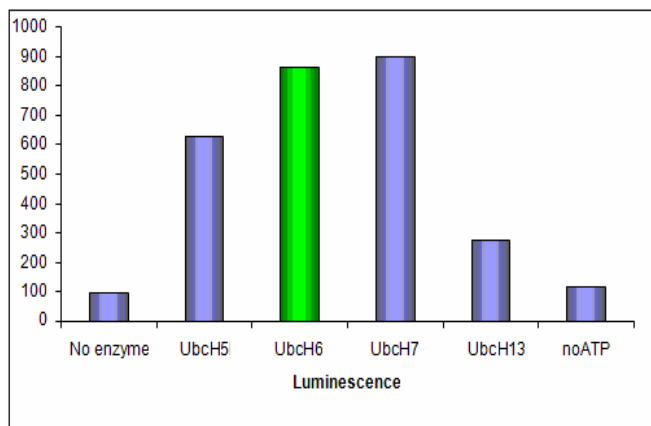
**Description:** Ubch6, also known as UBE2E1 (GenBank Accession No. NM\_003341), amino acids 2-end, with N-terminal His-tag, MW = 22 kDa, expressed in an *E. coli* cell expression system.

**Activity Assay:** 50 µl reaction mix (4 mM ATP, 5 mM MgCl<sub>2</sub>, 1 mM DTT, UBE1 (0.5 µg), Ubch6 or other E2, Biotin-Ubiquitin (0.5 µg) and Smurf2 (2 µg) in 50 mM Tris pH 7.4) for 30 min at 37°C, then add to streptavidin coated plates for 30 min at 37°C. Incubate with anti-Smurf2, then Europium-labeled secondary antibody, and detect by time resolved fluorescence (λ<sub>ex</sub>=330 nm, λ<sub>em</sub>=620 nm).

**Application:** Useful for the study of enzyme kinetics, screening inhibitors, and selectivity profiling.

### Quality Assurance

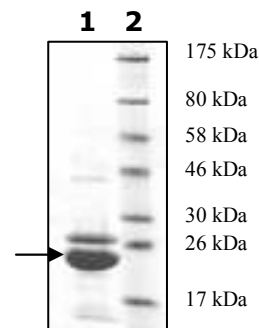
**Ubch6 Activity**



**4-20 % SDS-PAGE  
 Coomassie staining**

**Lane 1:**  
 10 µg Ubch6  
**Lane 2:**  
 Protein Marker  
 BioLabs (#P7708L)

**MW:** 22 kDa  
**Purity:** ~65%



OUR PRODUCTS ARE FOR RESEARCH USE ONLY. NOT FOR DIAGNOSTIC OR THERAPEUTIC USE.

To place your order, please contact us by Phone **1.858.829.3082**, Fax **1.858.481.8694**  
 Or you can Email us at: [info@bpsbioscience.com](mailto:info@bpsbioscience.com)  
 Please visit our website at: [www.bpsbioscience.com](http://www.bpsbioscience.com)