



# SZABO SCANDIC

Part of Europa Biosite

## Produktinformation



Forschungsprodukte & Biochemikalien



Zellkultur & Verbrauchsmaterial



Diagnostik & molekulare Diagnostik



Laborgeräte & Service

Weitere Information auf den folgenden Seiten!  
See the following pages for more information!



### Lieferung & Zahlungsart

siehe unsere [Liefer- und Versandbedingungen](#)

### Zuschläge

- Mindermengenzuschlag
- Trockeneiszuschlag
- Gefahrgutzuschlag
- Expressversand

### SZABO-SCANDIC HandelsgmbH

Quellenstraße 110, A-1100 Wien

T. +43(0)1 489 3961-0

F. +43(0)1 489 3961-7

[mail@szabo-scandic.com](mailto:mail@szabo-scandic.com)

[www.szabo-scandic.com](http://www.szabo-scandic.com)

[linkedin.com/company/szaboscandic](https://www.linkedin.com/company/szaboscandic) 

## Data Sheet

### CUL3/Rbx1, GST-tag

Human, recombinant, N-terminal GST-tag (CUL3)

**Catalog #:** 80409

**Lot #:** 150107-3      **Conc.:** 0.13 mg/ml

**Formulated in:** 40 mM Tris-HCl, pH 8.0, 110 mM NaCl, 2.2 mM KCl, 0.04% Tween-20, 20% glycerol, and 1.6 mM glutathione

**Stability:** At least 6 months at  $-80^{\circ}\text{C}$ . Avoid freeze/thaw cycles. Storing diluted enzyme is not recommended, if necessary, use carrier protein (BSA 0.1 – 0.5%).

#### References:

1. Kaspar, J. *et al.*, *J. Biol. Chem.* 2010; **285**: 21349-21358
2. Kaspar, J. *et al.*, *J. Cell. Sci.* 2012; **125**: 1027-1038.

#### Description:

Complex of human cullin-3 (CUL3) with human RING box protein 1 (Rbx1), also known as E3 ubiquitin-protein ligase RBX1. CUL3 (a.a. 2-768(end) with N-terminal GST-tag, 117 kDa) is co-expressed with Rbx1 (a.a. 1-108(end), 12 kDa) in a baculovirus-infected Sf9 cell expression system. GenBank Accession Nos. are NM\_003590 (CUL3) and NM\_014248 (Rbx1).

#### Application:

Useful for the study of enzyme kinetics, screening inhibitors, and selectivity profiling.

### Quality Assurance

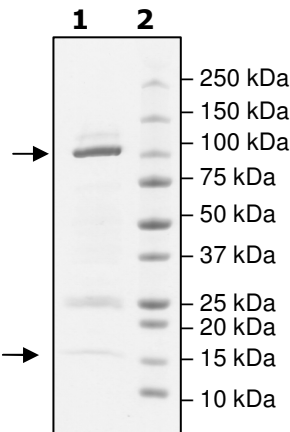
#### 4-20% SDS-PAGE Coomassie staining

**Lane 1:**  
3.1  $\mu\text{g}$  CUL3/Rbx1

**Lane 2:**  
Protein Marker

**Purity:**  $\geq 72\%$   
(CUL3: 66%  
RBX1: 6%)

**MW:**  
CUL3: 117 kDa  
RBX1: 12 kDa



OUR PRODUCTS ARE FOR RESEARCH USE ONLY. NOT FOR DIAGNOSTIC OR THERAPEUTIC USE.

To place your order, please contact us by Phone **1.858.829.3082** Fax **1.858.481.8694**

Or you can Email us at: [info@bpsbioscience.com](mailto:info@bpsbioscience.com)

Please visit our website at: [www.bpsbioscience.com](http://www.bpsbioscience.com)