



# SZABO SCANDIC

Part of Europa Biosite

## Produktinformation



Forschungsprodukte & Biochemikalien



Zellkultur & Verbrauchsmaterial



Diagnostik & molekulare Diagnostik



Laborgeräte & Service

Weitere Information auf den folgenden Seiten!  
See the following pages for more information!



### Lieferung & Zahlungsart

siehe unsere [Liefer- und Versandbedingungen](#)

### Zuschläge

- Mindermengenzuschlag
- Trockeneiszuschlag
- Gefahrgutzuschlag
- Expressversand

### SZABO-SCANDIC HandelsgmbH

Quellenstraße 110, A-1100 Wien

T. +43(0)1 489 3961-0

F. +43(0)1 489 3961-7

[mail@szabo-scandic.com](mailto:mail@szabo-scandic.com)

[www.szabo-scandic.com](http://www.szabo-scandic.com)

[linkedin.com/company/szaboscandic](https://www.linkedin.com/company/szaboscandic) 

## Data Sheet

### PARP15

Human, recombinant, N-terminal GST tag

**Catalog #:** 80517

**Lot#:** 121212-2      **Conc.:** 0.02 mg/ml

**Formulated in:** 40 mM Tris pH8.0, 110 mM NaCl, 2.2 mM KCl, 0.04% Tween-20, 16 mM glutathione, and 20% glycerol.

**Stability:** >6 months at  $-80^{\circ}\text{C}$ . *Avoid freeze/thaw cycles.*

**Reference:**

1. Andersson CD., *et al. J. Med. Chem.* 2012 Sep 13;**55(17)**:7706-18.
2. Ricardo C. T. Aguiar., *et al. J. Biochem.* 2005 Oct 28;**(40)**:33756-65.

**Description:**

Human poly (ADP-ribose) polymerase family, member 15 (PARP15) (GenBank Accession No. NM\_152615, var2), a.a. 221-444(end) with N-terminal GST tag, MW = 52.5 kDa, expressed in an *E. coli* expression system.

**Assay Conditions:**

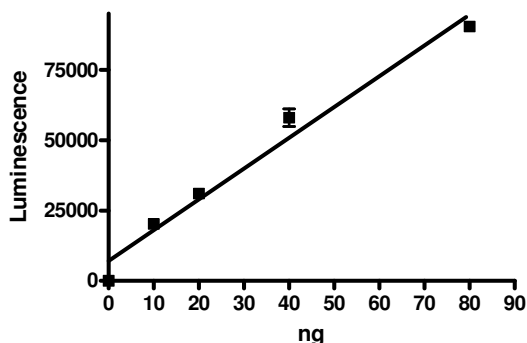
Enzyme reaction is conducted using BPS PARP15 Assay Kit (Catalog #80567) following kit protocol, at room temperature for 30 minutes.

**Application:**

Useful for the study of enzyme kinetics, screening inhibitors, and selectivity profiling.

## Quality Assurance

### Specific Activity



### 4-20% SDS-PAGE Coomassie staining

**Lane 1:**

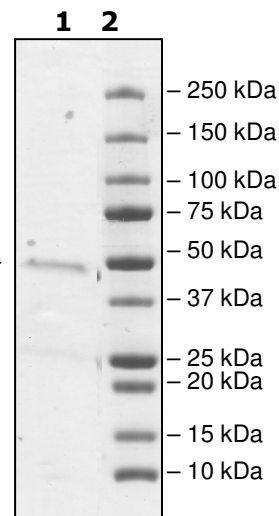
0.2  $\mu\text{g}$  PARP15

**Lane 2:**

Protein Marker

**MW:** 52.5 kDa

**Purity:**  $\geq 85\%$



OUR PRODUCTS ARE FOR RESEARCH USE ONLY. NOT FOR DIAGNOSTIC OR THERAPEUTIC USE.

To place your order, please contact us by Phone **1.858.829.3082** Fax **1.858.481.8694**

Or you can Email us at: [info@bpsbioscience.com](mailto:info@bpsbioscience.com)

Please visit our website at: [www.bpsbioscience.com](http://www.bpsbioscience.com)



6044 Cornerstone Court West, Suite E  
San Diego, CA 92121  
**Tel:** 1.858.829.3082  
**Fax:** 1.858.481.8694  
**Email:** [info@bpsbioscience.com](mailto:info@bpsbioscience.com)

**Sequence:**

MSPILGYWKIKGLVQPTRLLEYLEEKYEEHLYERDEGDKWRNKKFELGLEFPNLPYYI  
DGDVKLTQSMAIRYIADKHNMLGGCPKERAEISMLEGAVLDIRYGVSRIAYSKDFETLK  
VDFLSKLPEMLKMFEDRLCHKTYLNGDHVTHPDFMLYDALDVVLYMDPMCLDAFPKLV  
CFKKRIEAIPOIDKYLKSSKYIAWPLQGQWQATFGGGDHPPKSDLEVLFQGPLGSIFYDS  
MKKRDLASLNFQSTFSMTTCNLPEHWTD MNHQLFCMVQLEPGQSEYNTIKDKFTRT  
CSSYAIEKIERIQNAFLWQSYQVKKRQMDIKNDHKNNERLLFHGTDADSVPYVNQHGF  
NRSCAGKNAVSYGKGTYFAVDASYSKDTYSKPDSNGRKHMYVVRVLTGVFTKGRAG  
LVTPPPKNPHNPTDLFDSVTNNTTRSPKLFVVFVDNQAYPEYLITFTA

OUR PRODUCTS ARE FOR RESEARCH USE ONLY. NOT FOR DIAGNOSTIC OR THERAPEUTIC USE.

To place your order, please contact us by Phone **1.858.829.3082** Fax **1.858.481.8694**  
Or you can Email us at: [info@bpsbioscience.com](mailto:info@bpsbioscience.com)  
Please visit our website at: [www.bpsbioscience.com](http://www.bpsbioscience.com)