



SZABO SCANDIC

Part of Europa Biosite

Produktinformation



Forschungsprodukte & Biochemikalien



Zellkultur & Verbrauchsmaterial



Diagnostik & molekulare Diagnostik



Laborgeräte & Service

Weitere Information auf den folgenden Seiten!
See the following pages for more information!



Lieferung & Zahlungsart

siehe unsere [Liefer- und Versandbedingungen](#)

Zuschläge

- Mindermengenzuschlag
- Trockeneiszuschlag
- Gefahrgutzuschlag
- Expressversand

SZABO-SCANDIC HandelsgmbH

Quellenstraße 110, A-1100 Wien

T. +43(0)1 489 3961-0

F. +43(0)1 489 3961-7

mail@szabo-scandic.com

www.szabo-scandic.com

[linkedin.com/company/szaboscandic](https://www.linkedin.com/company/szaboscandic) 

Data Sheet

PARP10, FLAG-Strep-Tag

Human, Recombinant, N-terminal FLAG-Tag,
C-terminal Strep-Tag

Catalog #: 80522

Lot #: 161111 **Conc.:** 0.56 mg/ml

Formulated in: 40 mM Tris-HCl, pH 8.0,
110 mM NaCl, 2.2 mM KCl, 0.04%
Tween20, 20% glycerol, 80 µg/ml flag
peptide

Stability: At least 6 months at -80°C. *Avoid freeze/thaw cycles. Storing diluted enzyme is not recommended, if necessary, use carrier protein (BSA 0.1 – 0.5%).*

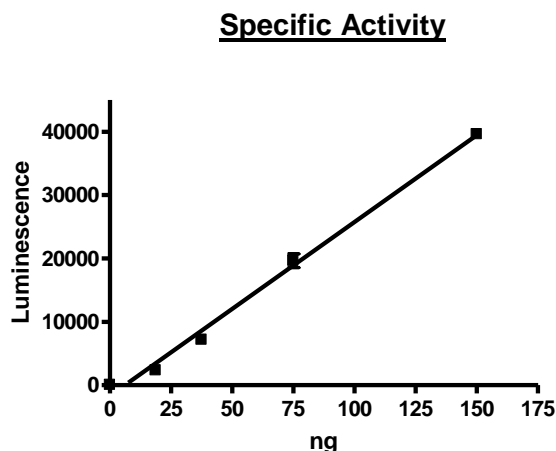
References:

1. Kleine, H., *et al.*, *Molecular Cell*. 2007; **32(1)**:57-69.
2. Chou, H., *et al.*, *Journal of Biological Chemistry*, 2006 Feb; **281**:15201-15207.

Description: Human PARP10, GenBank Accession No. NM_032789, with N-terminal FLAG-Tag and C-terminal Strep-tag, a.a. 805-1025, MW = 27 kDa, expressed in a Baculovirus infected Sf9 cell expression system.

Application: Useful for the study of enzyme kinetics, screening inhibitors, and selectivity profiling.

Quality Assurance

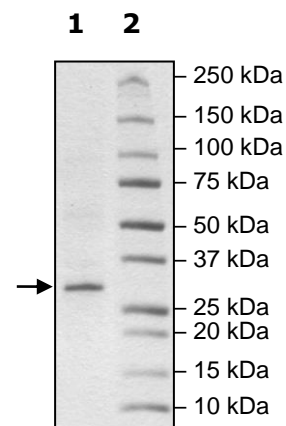


4-20% SDS-PAGE Coomassie staining

Lane 1:
PARP10
1 µg loaded

Lane 2:
Protein Marker

MW: 27 kDa
Purity: ≥86%



OUR PRODUCTS ARE FOR RESEARCH USE ONLY. NOT FOR DIAGNOSTIC OR THERAPEUTIC USE.

To place your order, please contact us by Phone **1.858.829.3082** Fax **1.858.481.8694**

Or you can Email us at: info@bpsbioscience.com

Please visit our website at: www.bpsbioscience.com