



SZABO SCANDIC

Part of Europa Biosite

Produktinformation



Forschungsprodukte & Biochemikalien



Zellkultur & Verbrauchsmaterial



Diagnostik & molekulare Diagnostik



Laborgeräte & Service

Weitere Information auf den folgenden Seiten!
See the following pages for more information!



Lieferung & Zahlungsart

siehe unsere [Liefer- und Versandbedingungen](#)

Zuschläge

- Mindermengenzuschlag
- Trockeneiszuschlag
- Gefahrgutzuschlag
- Expressversand

SZABO-SCANDIC HandelsgmbH

Quellenstraße 110, A-1100 Wien

T. +43(0)1 489 3961-0

F. +43(0)1 489 3961-7

mail@szabo-scandic.com

www.szabo-scandic.com

[linkedin.com/company/szaboscandic](https://www.linkedin.com/company/szaboscandic) 

Data Sheet

PLPro (723-1037), His-tag (SARS-CoV-1)

SARS-CoV-1, Recombinant, N-terminal His-tag
Catalog #: 81091
Lot #: 200421 **Conc:** 0.70 mg/ml

Formulated in: PBS, 10% glycerol.

Stability: At least 6 months at -80°C. Avoid freeze/thaw cycles.

References:

1. Nicoloson, B., *et al.*, *Protein Science*. 2008; **17**:1035-1043.
2. Wang, D. *et al.*, *JAMA*. 2020;**323**(11): 1061.

Description: SARS-CoV-1 papain-like protease (PLPro) also known as PLP1, GenBank Accession No. NP_828862.2, a.a. 723-1037, with a N-terminal His-tag, expressed in an *E. coli* expression system. MW=35 kDa.

Applications: This enzyme is active in the Ub-CHOP and ISG15-CHOP assays.

Quality Assurance

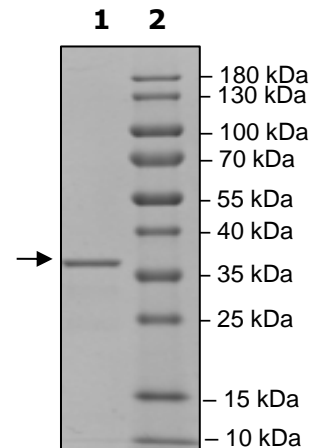
10-20% SDS-PAGE
Coomassie staining

Lane 1:
PLPro

Lane 2:
Protein Marker

Purity: ≥90%

MW: 35 kDa



OUR PRODUCTS ARE FOR RESEARCH USE ONLY. NOT FOR DIAGNOSTIC OR THERAPEUTIC USE.

To place your order, please contact us by Phone **1.858.202.1401** Fax **1.858.481.8694**
Or you can Email us at: info@bpsbioscience.com
Please visit our website at: www.bpsbioscience.com