



# SZABO SCANDIC

Part of Europa Biosite

## Produktinformation



Forschungsprodukte & Biochemikalien



Zellkultur & Verbrauchsmaterial



Diagnostik & molekulare Diagnostik



Laborgeräte & Service

Weitere Information auf den folgenden Seiten!  
See the following pages for more information!



### Lieferung & Zahlungsart

siehe unsere [Liefer- und Versandbedingungen](#)

### Zuschläge

- Mindermengenzuschlag
- Trockeneiszuschlag
- Gefahrgutzuschlag
- Expressversand

### SZABO-SCANDIC HandelsgmbH

Quellenstraße 110, A-1100 Wien

T. +43(0)1 489 3961-0

F. +43(0)1 489 3961-7

[mail@szabo-scandic.com](mailto:mail@szabo-scandic.com)

[www.szabo-scandic.com](http://www.szabo-scandic.com)

[linkedin.com/company/szaboscandic](https://www.linkedin.com/company/szaboscandic) 

## Data Sheet

### Calmodulin

Human, recombinant, N-terminal His -tag

**Catalog#:** 81152

**Lot#:** 140919

**Conc.:** 0.2 mg/ml

**Formulated in:** 50 mM sodium phosphate, pH 7.0, 300 mM NaCl, 150 mM imidazole, 0.1 mM PMSF, 0.25 mM DTT, 25% glycerol.

**Stability:** >6 months at  $-80^{\circ}\text{C}$ . Avoid freeze/thaw cycles. Storing diluted protein is not recommended, if necessary, use carrier protein (BSA 0.1 – 0.5%).

**References:**

1. Li, H. *et al.*, *FEBS Lett.* 2004; **13(559)**: 175-180.
2. Huang, M. *et al.*, *Cell Stress Chaperones.* 2009; **14(4)**: 343-353.

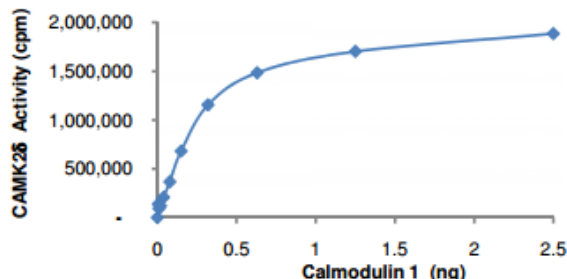
**Description:** Human Calmodulin 1, also known as CALM1, CALML2, CAMI, DD132, PHKD, GenBank Accession No. NM\_006888, full-length with an N-terminal His-tag, expressed in an *E. coli* cell expression system. MW = 17 kDa.

**Assay Conditions:** Varying amounts of calmodulin 25 ng CAMK2 $\delta$ , 200 ng/ $\mu\text{l}$  autocamtide-2 peptide, 0.4 mM  $\text{CaCl}_2$ , 50  $\mu\text{M}$  ATP and trace [ $^{33}\text{P}$ ]- $\gamma$ -ATP in 25  $\mu\text{l}$  of reaction volume for 15 min at  $30^{\circ}\text{C}$ .

**Application:** Useful for studying calmodulin-dependent kinase kinetics *in vitro*.

### Quality Assurance

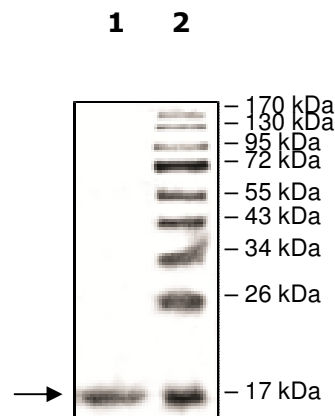
**Specific Activity**



**4-20% SDS-PAGE  
Coomassie staining**

**Lane 1:**  
Calmodulin 1  
**Lane 2:**  
Protein Marker

**MW:** 17 kDa  
**Purity:**  $\geq 90\%$



OUR PRODUCTS ARE FOR RESEARCH USE ONLY. NOT FOR DIAGNOSTIC OR THERAPEUTIC USE.

To place your order, please contact us by Phone **1.858.829.3082** Fax **1.858.481.8694**  
 Or you can Email us at: [info@bpsbioscience.com](mailto:info@bpsbioscience.com)  
 Please visit our website at: [www.bpsbioscience.com](http://www.bpsbioscience.com)