



SZABO SCANDIC

Part of Europa Biosite

Produktinformation



Forschungsprodukte & Biochemikalien



Zellkultur & Verbrauchsmaterial



Diagnostik & molekulare Diagnostik



Laborgeräte & Service

Weitere Information auf den folgenden Seiten!
See the following pages for more information!



Lieferung & Zahlungsart

siehe unsere [Liefer- und Versandbedingungen](#)

Zuschläge

- Mindermengenzuschlag
- Trockeneiszuschlag
- Gefahrgutzuschlag
- Expressversand

SZABO-SCANDIC HandelsgmbH

Quellenstraße 110, A-1100 Wien

T. +43(0)1 489 3961-0

F. +43(0)1 489 3961-7

mail@szabo-scandic.com

www.szabo-scandic.com

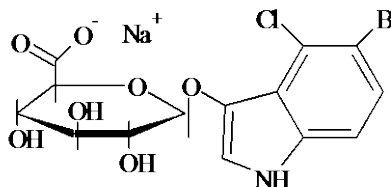
[linkedin.com/company/szaboscandic](https://www.linkedin.com/company/szaboscandic) 

PRODUCT AND SAFETY DATA SHEET

PRODUCT NAME: **X-GlcU, Na** (X-GlcA, Na; 5-bromo-4-chloro-3-indolyl- β -D-glucuronide, sodium salt)

CATALOG NUMBER: **10017**

MOLECULAR INFORMATION: $C_{14}H_{12}BrClNaO_7$
Mwt: 444.7
[129541-41-9]

**PROPERTIES:**

Color & Form White solid
Purity $\geq 98\%$ by TLC
Solubility Soluble in water (pH>6) or DMSO.
Absorption Maximum

STORAGE AND HANDLING: Store desiccated at $\leq 4^\circ\text{C}$ upon receipt. Protect from light, especially in solution.

APPLICATION: The chromogenic substrate X-GLUC is used in a variety of applications for the detection of the β -glucuronidase enzyme. This compound has been used for the detection of β -glucuronidase in plant tissue sections. Because of the localized color which X-GLUC produces upon reduction, it is extremely useful in identifying gene presence within most cell types. This product is also used in the rapid detection of the GUS (*E. coli* β -glucuronidase) gene fusion marker in plants. X-GLUC also has reported applications in the detection of *E. coli* in food samples such as meat, dairy products, and shellfish. This chemical has clinical applications in the assessment of urinary tract infection by detecting the presence of *E. coli*.

TOXICITY: Unknown

FIRST AID: Potentially harmful. Avoid prolonged or repeated exposure. Avoid getting in eyes, on skin, or on clothing. Wash thoroughly after handling. If eye or skin contact occurs, wash affected areas with plenty of water for 15 minutes and seek medical advice. In case of inhaling or swallowing, move individual to fresh air and seek medical advice immediately.

Disclaimer: Materials from Biotium are sold for research use only, and are not intended for food, drug, household, or cosmetic use. Biotium is not liable for any damage resulting from handling or contact with this product.