



# SZABO SCANDIC

Part of Europa Biosite

## Produktinformation



Forschungsprodukte & Biochemikalien



Zellkultur & Verbrauchsmaterial



Diagnostik & molekulare Diagnostik



Laborgeräte & Service

Weitere Information auf den folgenden Seiten!  
See the following pages for more information!



### Lieferung & Zahlungsart

siehe unsere [Liefer- und Versandbedingungen](#)

### Zuschläge

- Mindermengenzuschlag
- Trockeneiszuschlag
- Gefahrgutzuschlag
- Expressversand

### SZABO-SCANDIC HandelsgmbH

Quellenstraße 110, A-1100 Wien

T. +43(0)1 489 3961-0

F. +43(0)1 489 3961-7

[mail@szabo-scandic.com](mailto:mail@szabo-scandic.com)

[www.szabo-scandic.com](http://www.szabo-scandic.com)

[linkedin.com/company/szaboscandic](https://www.linkedin.com/company/szaboscandic) 

# Product Information

## 6X GelRed® Prestain Loading Buffers

### Product List

Cat. no.	Product
41009	6X GelRed® Prestain Loading Buffer with Blue Tracking Dyes
41010	6X GelRed® Prestain Loading Buffer with Orange Tracking Dye

Unit Size: 1 mL

### Storage and Handling

Store at 4°C, protected from light. Product is stable for at least 6 months from date of receipt when stored as recommended. The dye can be handled under ambient light during sample preparation and electrophoresis without affecting product performance.

### Product Description

GelRed® is a sensitive, stable and environmentally safe fluorescent nucleic acid dyes designed to replace the highly toxic ethidium bromide (EtBr). 6X GelRed® Prestain Loading Buffers are gel loading buffers containing density agents, tracking dyes, and GelRed® Dye. The 6X prestain loading buffer is added to samples in place of gel loading buffer, and eliminates the need to add fluorescent DNA dye to the agarose gel during casting. See frequently asked questions, next page, for a comparison of prestain, precast, and post-stain protocols for GelRed®.

Prestain buffer with blue tracking dyes (Cat. no. 41009) contains two blue electrophoresis tracking dyes that run at approximately 1.5 kb and 200 bp in a 1% agarose gel. Prestain buffer with orange tracking dye (Cat. no. 41010) contains an orange electrophoresis tracking dye that runs at approximately 50 bp in a 1% agarose gel.

GelRed® and EtBr have virtually the same spectra (Figure 1.), so you can directly replace EtBr with GelRed® without changing your existing imaging system. In addition, GelRed® is far more sensitive than EtBr, which cannot be used in DNA loading buffer to prestain DNA. GelRed® is compatible with downstream applications such as sequencing and cloning. GelRed® is efficiently removed from DNA by commercial gel extraction kits or by phenol/chloroform extraction and ethanol precipitation.

**Note:** 6X GelRed® Prestain Loading Buffer with Blue Tracking Dyes (Cat. no. 41009) has been discontinued. Our GelRed® Prestain Plus 6X DNA Loading Dye (Cat. no. 41011) is an improved version of this product which has been reformulated to increase brightness and minimize DNA migration shift.

### GelRed® Safety

GelRed® was subjected to a series of tests at Biotium and by three independent testing services to assess the dye's safety for routine handling and disposal. Test results confirm that the dye is impenetrable to both latex gloves and cell membranes. The dye is non-cytotoxic and non-mutagenic at concentrations well above the working concentrations used in gel staining. GelRed® successfully passed environmental safety tests in compliance with CCR Title 22 Hazardous Waste Characterization, under which the dye is not classified as hazardous waste. A complete safety report is available at [www.biotium.com](http://www.biotium.com).

While GelRed® has undergone extensive safety testing, Biotium recommends following universal safety precautions when working in the laboratory.

### Experimental Protocol

The optimal loading amount of DNA is 50-200 ng DNA per lane. For samples of unknown DNA concentration, we recommend loading half or less the volume you would normally run on an ethidium bromide precast gel. Loading more than the recommended amount of DNA may result in smearing or smiling of bands or shifted band migration (see Figure 2). If you need to run more than the recommended amount of DNA per lane, or if highly accurate sizing of DNA fragments is required, we recommend using catalog numbers 41001 or 41003 (GelRed® 3X in water or 10,000X in water) to stain gels after electrophoresis using the post-staining procedure. See Table 1 for a comparison of GelRed® staining methods.

1. Prepare agarose gel according to your standard protocol. Do not add ethidium bromide, GelRed®, or any other fluorescent DNA dye to the agarose or buffer.
2. Briefly vortex 6X GelRed® Prestain Loading Buffer. Add 6X buffer to DNA samples at a volume ratio of 1:5 (for example, mix 10 µL sample + 2 µL 6X loading buffer). For best results, the 10 µL sample should contain between 50-100 ng DNA for ladder, or 10-20 ng DNA per band.
3. Load samples and run gels according to your standard protocol.
4. Visualize bands using a UV transilluminator or other gel documentation system. Gels can be imaged using an ethidium bromide emission filter. SYBR® Green or GelStar™ filters also can be used for gel imaging with equally good results.

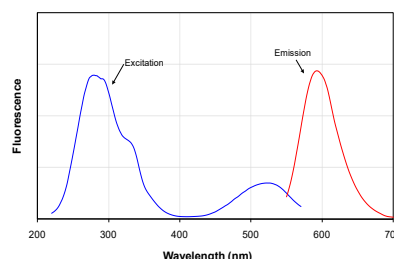


Figure 1. Excitation and emission spectra of GelRed® Dye in the presence of dsDNA.

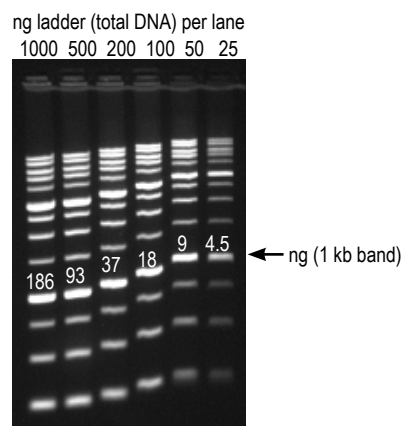


Figure 2. Varying amounts of Biotium's 1 kb ladder (Cat. no. 31021) were prestained using 6X GelRed® Loading Dye and run on a 1% TBE agarose gel in 1X TBE at 100V for 90 minutes. Gel was imaged using a GelDoc-It imaging system from UVP with an ethidium bromide filter. Total ladder amount loaded is listed above each lane; mass of the 1 kb band is shown above the band. See product protocol for DNA loading recommendations.

**Table 1. Comparison of GelRed® Staining Methods**

Method	Cat. no.	Procedure	Recommended for	Advantages	Disadvantages
Prestain	41009 41010 41011	GelRed® loading buffer is added directly to the sample	<ul style="list-style-type: none"> <li>• Rapid, routine analysis of less than 200 ng DNA per well.</li> </ul>	<ul style="list-style-type: none"> <li>• Rapid results</li> </ul>	<ul style="list-style-type: none"> <li>• GelRed® can alter band migration</li> <li>• Overloading of DNA causes band smearing or smiling</li> </ul>
Precast	41003 GelRed®, 10,000X in water	GelRed® is added to molten agarose at 1X concentration before casting the gel			
Post-stain	-or- 41001 GelRed®, 3X in water	No fluorescent dye is added during electrophoresis. The gel is stained in 3X GelRed® solution after electrophoresis.	<ul style="list-style-type: none"> <li>• Highly accurate band sizing</li> <li>• If more than 200 ng DNA per well must be loaded</li> <li>• Staining restriction enzyme digested DNA</li> </ul>	<ul style="list-style-type: none"> <li>• Sharpest bands and highly accurate sizing</li> <li>• Staining solution can be re-used</li> <li>• Addition of sodium chloride to staining solution enhances sensitivity</li> </ul>	<ul style="list-style-type: none"> <li>• 30 minute staining step required after electrophoresis</li> <li>• <b>Note:</b> Some customers have reported good results after only five minutes of staining when using fresh dye solution</li> </ul>

Frequently Asked Questions	Answers
What is the difference between GelRed® and GelGreen®?	GelRed® is spectrally similar to ethidium bromide, and can be imaged using UV excitation. GelGreen® is spectrally similar to SYBR® Green or SYBR® Safe, and can be used with either UV or blue light excitation.
Can GelRed® be used to stain ssDNA or RNA?	GelRed® can be used to stain ssDNA and RNA, but it is twice as sensitive for dsDNA than for ssDNA or RNA.
Is GelRed® compatible with downstream applications such as cloning, ligation and sequencing?	Yes. Gel extraction or phenol-chloroform extraction can be used to remove dye from DNA. Biotium's gel extraction kit (Cat. no. 31030) has been validated for removal of GelRed® and GelGreen® from DNA. Gel extraction kits from other suppliers also have be used with GelRed® and GelGreen®.
Can GelRed® be used for formaldehyde, polyacrylamide, DGGE, EMSA or PFGE (pulse-field) gels?	Yes. Customers have reported using GelRed® in glyoxal and formaldehyde agarose gels for precast staining of RNA. Use the post-staining protocol for polyacrylamide, DGGE, EMSA, and PFGE gels.
Is GelRed® compatible with Southern or northern blotting?	GelRed® has been validated for Southern blotting (Plant Cell Report doi:10.1007/s00299-011-1150-7). We recommend using Cat. no. 41003 (10,000X GelRed® in water) and following the post-staining protocol for blotting applications.
How should I dispose of GelRed®?	GelRed® has passed the EPA regulated Title 22 test. Some facilities have approved the disposal of GelRed® directly down the drain. However, because regulations vary, please contact your safety office for local disposal guidelines. If required, GelRed® can be adsorbed by activated charcoal bags (Cat. no. 22007) for disposal as chemical waste.
What is the lower detection limit of GelRed®?	Some users have reported being able to detect bands containing less than 0.1 ng DNA. However, the limit of detection will depend on instrument capability and exposure settings.
What is the binding mechanism of GelRed®?	GelRed® most likely binds by a combination of intercalation and electrostatic interaction.
What is the chemical structure of GelRed®?	The chemical structure of GelRed® is proprietary.
Does GelRed® migrate during electrophoresis?	GelRed® does not migrate through the gel as easily as EtBr. It is not necessary to add dye to the running buffer, and the gel will be stained more homogeneously with GelRed® than with EtBr.
Can I reuse a GelRed® precast gel after electrophoresis?	We do not recommend reusing GelRed® precast gels as signal decreases with subsequent electrophoresis.
Does GelRed® need to be used in the dark?	GelRed® is very stable. You can use the dye in room light, however we recommend storing the dye in the dark.
I accidentally left my GelRed® in the light. Will it still work?	While we recommend that you protect the dye from light during long term storage, we have had a customer report using GelRed® with success after accidentally leaving it in ambient light for one month.
Is there a difference between 10,000X GelRed® in DMSO and 10,000X GelRed® in water?	GelRed® in water is the newer and improved product. We recommend using GelRed®, 10,000X in water (Cat. no. 41003) to avoid handling DMSO, a solvent that can be absorbed through the skin. We continue to offer GelRed® in DMSO because some users do not wish to alter their established laboratory protocols.

**Related Products**

Catalog number	Product
41011	GelRed® Prestain Plus 6X DNA Loading Dye
41029	GelRed® Agarose LE
41030	GelGreen® Agarose LE
41008	PAGE GelRed® Nucleic Acid Gel Stain
31022	Ready-to-Use 1 kb DNA Ladder
31032	Ready-to-Use 100 bp DNA Ladder
41001-41003	GelRed® Nucleic Acid Gel Stain
41004-41005	GelGreen® Nucleic Acid Gel Stain
41020	DNAzure® Blue Nucleic Acid Gel Stain
41028	Agarose LE, Ultrapure Molecular Biology Grade
41024-4L	Water, Ultrapure Molecular Biology Grade (4L Cubitainer®)

Please visit our website at [www.biotium.com](http://www.biotium.com) for information on our life science research products, including environmentally friendly EvaGreen® qPCR dye and qPCR master mixes, Cheetah™ chemically-modified hot-start Taq polymerase, AccuBlue® DNA quantitation kits, Lumitein™ fluorescent gel stain, fluorescent CF® Dye antibody conjugates and reactive dyes, apoptosis reagents, fluorescent probes, and kits for cell biology research.

SYBR is a registered trademark of Molecular Probes Inc; GelStar is a trademark of Lonza. Materials from Biotium are sold for research use only, and are not intended for food, drug, household, or cosmetic use.