



SZABO SCANDIC

Part of Europa Biosite

Produktinformation



Forschungsprodukte & Biochemikalien



Zellkultur & Verbrauchsmaterial



Diagnostik & molekulare Diagnostik



Laborgeräte & Service

Weitere Information auf den folgenden Seiten!
See the following pages for more information!



Lieferung & Zahlungsart

siehe unsere [Liefer- und Versandbedingungen](#)

Zuschläge

- Mindermengenzuschlag
- Trockeneiszuschlag
- Gefahrgutzuschlag
- Expressversand

SZABO-SCANDIC HandelsgmbH

Quellenstraße 110, A-1100 Wien

T. +43(0)1 489 3961-0

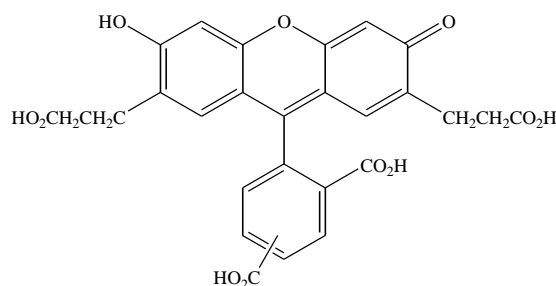
F. +43(0)1 489 3961-7

mail@szabo-scandic.com

www.szabo-scandic.com

[linkedin.com/company/szaboscandic](https://www.linkedin.com/company/szaboscandic) 

PRODUCT AND SAFETY DATA SHEET

PRODUCT NAME: BCECF Acid**CATALOG #:** 51010**MOLECULAR INFORMATION:** C₂₇H₂₀O₁₁
MWt: 520.5
[85138-49-4]**PROPERTIES:**

| | |
|-------------------------------|-------------------------|
| Color & Form | Yellow orange solid |
| Purity | ≥ 95% by HPLC |
| Solubility | Soluble in water (pH>6) |
| Absorption/Emission | 508 nm/530 nm |
| Extinction Coefficient | 90,000 |

STORAGE AND HANDLING:

Store desiccated at 4 °C upon receipt. Protect from light, especially when in solution.

APPLICATION:

BCECF (full chemical name: 2',7'-bis-(carboxyethyl)-5-(and-6)-carboxyfluorescein) is the most widely used fluorescent pH sensor. Because its pK_a (6.97) is close to physiological pH, BCECF can detect cytosolic pH change with high sensitivity. At low pH, the dye is weakly fluorescent but becomes more fluorescent with increasing pH. The excitation spectrum of the dye undergoes a slight shift during pH change, while the wavelength of the emission maximum remains unchanged. The pH is determined ratiometrically by the relative fluorescent intensities at 535 nm when the dye is excited at 439 nm and 505 nm respectively. BCECF acid is membrane-impermeant and therefore has to be loaded into cells via microinjection or scrape loading (See **51011, BCECF/AM**).

Ref: 1) Kolber, M.A., et al. *J. Immunol. Meth.* **108**, 255(1988); 2) Carpenter, L., et al. *Biochem. J.* **304**, 751(1994); 3) Sellers, J.R. et al. *J. Immunol. Meth.* **172**, 255(1994).

TOXICITY: Unknown

| | |
|-------------------|---|
| FIRST AID: | Potentially harmful. Avoid prolonged or repeated exposure. Avoid getting in eyes, on skin, or on clothing. Wash thoroughly after handling. If eye or skin contact occurs, wash affected areas with plenty of water for 15 minutes and seek medical advice. In case of inhaling or swallowing, move individual to fresh air and seek medical advice immediately. |
|-------------------|---|

Disclaimer: Materials from Biotium are sold for research use only, and are not intended for food, drug, household, or cosmetic use. Biotium is not liable for any damage resulting from handling or contact with this product.