



SZABO SCANDIC

Part of Europa Biosite

Produktinformation



Forschungsprodukte & Biochemikalien



Zellkultur & Verbrauchsmaterial



Diagnostik & molekulare Diagnostik



Laborgeräte & Service

Weitere Information auf den folgenden Seiten!
See the following pages for more information!



Lieferung & Zahlungsart

siehe unsere [Liefer- und Versandbedingungen](#)

Zuschläge

- Mindermengenzuschlag
- Trockeneiszuschlag
- Gefahrgutzuschlag
- Expressversand

SZABO-SCANDIC HandelsgmbH

Quellenstraße 110, A-1100 Wien

T. +43(0)1 489 3961-0

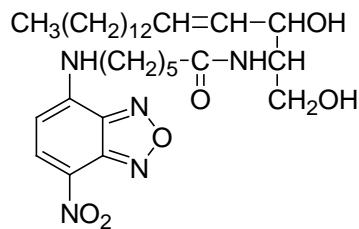
F. +43(0)1 489 3961-7

mail@szabo-scandic.com

www.szabo-scandic.com

[linkedin.com/company/szaboscandic](https://www.linkedin.com/company/szaboscandic) 

PRODUCT AND SAFETY DATA SHEET

PRODUCT NAME: NBD C6-Ceramide**CATALOG #:** 60030**MOLECULAR INFORMATION:** C₃₀H₄₉N₅O₆
Mwt: 575.74**PROPERTIES:**

Color & Form	Yellow solid
Purity	≥ 95% by TLC
Solubility	Soluble in chloroform or DMSO
$\lambda_{\text{ex}} \backslash \lambda_{\text{em}}$	466 nm(MeOH)
Extinction Coefficient	20,000 ± 3,000

STORAGE AND HANDLING: Store at ≤ -20°C and protect from light.**APPLICATION:** NBD C6-ceramide has been used for following sphingolipid metabolism in cells.

Ref.:1) *Methods Cell Biol.* **38**, 221(1993); 2) *Biochim Biophys Acta* **1113**, 277 (1992); 3) *Adv. Cell Mol. Biol. Membranes* **1**, 199(1993); 4) *Biochim Biophys Acta* **1082**, 113 (1991).

TOXICITY: Unknown.

FIRST AID:	Potentially harmful. Avoid prolonged or repeated exposure. Avoid getting in eyes, on skin, or on clothing. Wash thoroughly after handling. If eye or skin contact occurs, wash affected areas with plenty of water for 15 minutes and seek medical advice. In case of inhaling or swallowing, move individual to fresh air and seek medical advice immediately.
-------------------	---

Disclaimer: <i>Materials from Biotium are sold for research use only, and are not intended for food, drug, household, or cosmetic use. Biotium is not liable for any damage resulting from handling or contact with this product.</i>
--