



SZABO SCANDIC

Part of Europa Biosite

Produktinformation



Forschungsprodukte & Biochemikalien



Zellkultur & Verbrauchsmaterial



Diagnostik & molekulare Diagnostik



Laborgeräte & Service

Weitere Information auf den folgenden Seiten!
See the following pages for more information!



Lieferung & Zahlungsart

siehe unsere [Liefer- und Versandbedingungen](#)

Zuschläge

- Mindermengenzuschlag
- Trockeneiszuschlag
- Gefahrgutzuschlag
- Expressversand

SZABO-SCANDIC HandelsgmbH

Quellenstraße 110, A-1100 Wien

T. +43(0)1 489 3961-0

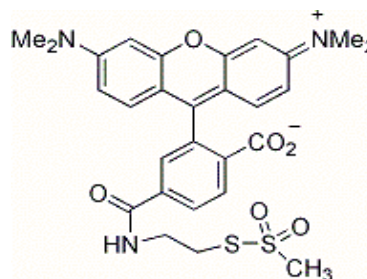
F. +43(0)1 489 3961-7

mail@szabo-scandic.com

www.szabo-scandic.com

[linkedin.com/company/szaboscandic](https://www.linkedin.com/company/szaboscandic) 

PRODUCT AND SAFETY DATA SHEET

PRODUCT NAME: MTS 6-carboxytetramethylrhodamine (MTS-6-TAMRA)**CATALOG #** 91052**MOLECULAR INFORMATION:** C₂₈H₂₉N₃O₆S₂
MW: 567**PROPERTIES:**

Color & Form	Red solid
Purity	≥ 95% by HPLC
Solubility	Soluble in DMF or DMSO at ≥ 10mg/mL
Absorption/Emission	540/565 nm (MeOH)
Extinction Coefficient	80,000

STORAGE AND HANDLING: Store desiccated at -20 °C. Protect from light.**APPLICATION:** MTS-6-TAMRA (MTS 6-carboxytetramethylrhodamine) is a fast-reacting and highly selective thiol-reactive label that permits one to attach the popular fluorescent dye carboxytetramethylrhodamine to a thiol group.Ref: *J. Biol. Chem.*, **281** (39), 28837(2006)**TOXICITY:** Unknown

FIRST AID:	Potentially harmful. Avoid prolonged or repeated exposure. Avoid getting in eyes, on skin, or on clothing. Wash thoroughly after handling. If eye or skin contact occurs, wash affected areas with plenty of water for 15 minutes and seek medical advice. In case of inhaling or swallowing, move individual to fresh air and seek medical advice immediately.
-------------------	---

Disclaimer: <i>Materials from Biotium are sold for research use only, and are not intended for food, drug, household, or cosmetic use. Biotium is not liable for any damage resulting from handling or contact with this product.</i>
--