



SZABO SCANDIC

Part of Europa Biosite

Produktinformation



Forschungsprodukte & Biochemikalien



Zellkultur & Verbrauchsmaterial



Diagnostik & molekulare Diagnostik



Laborgeräte & Service

Weitere Information auf den folgenden Seiten!
See the following pages for more information!



Lieferung & Zahlungsart

siehe unsere [Liefer- und Versandbedingungen](#)

Zuschläge

- Mindermengenzuschlag
- Trockeneiszuschlag
- Gefahrgutzuschlag
- Expressversand

SZABO-SCANDIC HandelsgmbH

Quellenstraße 110, A-1100 Wien

T. +43(0)1 489 3961-0

F. +43(0)1 489 3961-7

mail@szabo-scandic.com

www.szabo-scandic.com

[linkedin.com/company/szaboscandic](https://www.linkedin.com/company/szaboscandic) 

PRODUCT INFORMATION



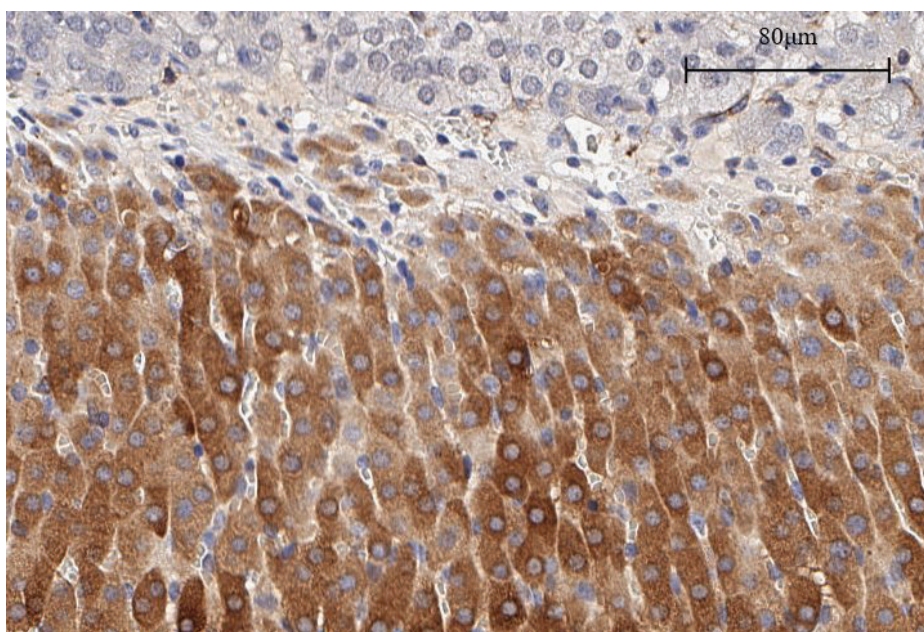
Prostaglandin I Synthase (mouse) Polyclonal Antibody

Item No. 100023

Overview and Properties

Contents:	This vial contains 500 µl of peptide affinity-purified polyclonal antibody.
Synonyms:	PGIS, PGI Synthase, Prostacyclin Synthase
Immunogen:	Synthetic peptide from the C-terminal region of mouse PGIS
Species Reactivity:	(+) Mouse, rat, bovine, and ovine; other species not tested
Uniprot No.:	O35074
Form:	Liquid
Storage:	-20°C (as supplied)
Stability:	≥3 years
Storage Buffer:	TBS, pH 7.4, with 50% glycerol, 0.1 BSA, and 0.02% sodium azide
Host:	Rabbit
Applications:	Immunohistochemistry (IHC) and Western blot (WB); the recommended starting dilution is 1:120 for IHC and WB. Other applications were not tested, therefore optimal working concentration/dilution should be determined empirically.

Image



Immunohistochemistry analysis of formalin-fixed, paraffin-embedded (FFPE) mouse adrenal gland tissue after heat induced antigen retrieval in pH 6.0 citrate buffer. After incubation with prostaglandin I synthase (mouse) polyclonal antibody, #100023, at a 1:120 dilution, slides were incubated with biotinylated secondary antibody, followed by alkaline phosphatase-streptavidin and chromogen (DAB).

WARNING
THIS PRODUCT IS FOR RESEARCH ONLY - NOT FOR HUMAN OR VETERINARY DIAGNOSTIC OR THERAPEUTIC USE.

SAFETY DATA
This material should be considered hazardous until further information becomes available. Do not ingest, inhale, get in eyes, on skin, or on clothing. Wash thoroughly after handling. Before use, the user must review the complete Safety Data Sheet, which has been sent via email to your institution.

WARRANTY AND LIMITATION OF REMEDY
Buyer agrees to purchase the material subject to Cayman's Terms and Conditions. Complete Terms and Conditions including Warranty and Limitation of Liability information can be found on our website.

Copyright Cayman Chemical Company, 10/09/2023

CAYMAN CHEMICAL
1180 EAST ELLSWORTH RD
ANN ARBOR, MI 48108 · USA
PHONE: [800] 364-9897
[734] 971-3335
FAX: [734] 971-3640
CUSTSERV@CAYMANCHEM.COM
WWW.CAYMANCHEM.COM

PRODUCT INFORMATION



Description

Prostaglandin I synthase (PGIS) catalyzes the isomerization of PGH_2 to PGI_2 . PGI_2 (prostacyclin) is a potent vasodilator and inhibitor of platelet aggregation. PGIS is a membrane-bound hemoprotein localized primarily in endothelial cells.¹ The cloned bovine and human enzymes contain 500 amino acids and a calculated molecular mass of 56,629 and 57,103, respectively.²⁻⁴ Northern blot analysis reveals that the mRNA for PGIS is expressed in a wide variety of human tissues and is particularly abundant in ovary, heart, skeletal muscle, lung, and prostate.²

References

1. DeWitt, D.L. and Smith, W.L. Purification of prostacyclin synthase from bovine aorta by immunoaffinity chromatography. Evidence that the enzyme is a hemoprotein. *J. Biol. Chem.* **258(5)**, 3285-3293 (1983).
2. Miyata, A., Hara, S., Yokoyama, C., *et al.* Molecular cloning and expression of human prostacyclin synthase. *Biochem. Biophys. Res. Commun.* **200(3)**, 1728-1734 (1994).
3. Pereira, B., Wu, K.K., and Wang, L.-H. Molecular cloning and characterization of bovine prostacyclin synthase. *Biochem. Biophys. Res. Commun.* **203(1)**, 59-66 (1994).
4. Hara, S., Miyata, A., Yokoyama, C., *et al.* Isolation and molecular cloning of prostacyclin synthase from bovine endothelial cells. *J. Biol. Chem.* **269(31)**, 19897-19903 (1994).

CAYMAN CHEMICAL
1180 EAST ELLSWORTH RD
ANN ARBOR, MI 48108 · USA
PHONE: [800] 364-9897
[734] 971-3335
FAX: [734] 971-3640
CUSTSERV@CAYMANCHEM.COM
WWW.CAYMANCHEM.COM