



# SZABO SCANDIC

Part of Europa Biosite

## Produktinformation



Forschungsprodukte & Biochemikalien



Zellkultur & Verbrauchsmaterial



Diagnostik & molekulare Diagnostik



Laborgeräte & Service

Weitere Information auf den folgenden Seiten!  
See the following pages for more information!



### Lieferung & Zahlungsart

siehe unsere [Liefer- und Versandbedingungen](#)

### Zuschläge

- Mindermengenzuschlag
- Trockeneiszuschlag
- Gefahrgutzuschlag
- Expressversand

### SZABO-SCANDIC HandelsgmbH

Quellenstraße 110, A-1100 Wien

T. +43(0)1 489 3961-0

F. +43(0)1 489 3961-7

[mail@szabo-scandic.com](mailto:mail@szabo-scandic.com)

[www.szabo-scandic.com](http://www.szabo-scandic.com)

[linkedin.com/company/szaboscandic](https://www.linkedin.com/company/szaboscandic) 

# PRODUCT INFORMATION



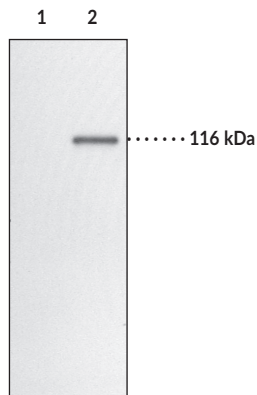
## Nod2 Monoclonal Antibody (Clone 2D9)

Item No. 10004942

### Overview and Properties

<b>Contents:</b>	This vial contains 200 µg of ammonium sulfate-purified monoclonal antibody.
<b>Synonyms:</b>	Caspase Recruitment Domain-containing Protein 15, Inflammatory Bowel Disease Protein 1, Nucleotide-binding Oligomerization Domain-containing Protein 2
<b>Immunogen:</b>	Recombinant protein fragment from the internal region of human Nod2
<b>Species Reactivity:</b>	(+) Human; other species not tested
<b>Uniprot No.:</b>	Q9HC29
<b>Form:</b>	Liquid
<b>Storage:</b>	-20°C (as supplied); aliquots of the antibody should be stored at -20°C for long term storage (avoid freeze-thaw cycles)
<b>Stability:</b>	≥1 year
<b>Storage Buffer:</b>	PBS, pH 7.4, with 0.02% sodium azide
<b>Clone:</b>	2D9
<b>Host:</b>	Mouse
<b>Isotype:</b>	IgG1κ
<b>Application:</b>	Western blot (WB); the recommended starting concentration for WB is 1:500. Other applications were not tested, therefore optimal working concentration/dilution should be determined empirically. Western blotting: caution, may only be suitable for analysis of Nod2 transfected cells.

### Image



Lane 1: Sham transfected 293T lysate (10 µg)  
Lane 2: Nod2 transfected 293T lysate (10 µg)

WARNING  
THIS PRODUCT IS FOR RESEARCH ONLY - NOT FOR HUMAN OR VETERINARY DIAGNOSTIC OR THERAPEUTIC USE.

SAFETY DATA  
This material should be considered hazardous until further information becomes available. Do not ingest, inhale, get in eyes, on skin, or on clothing. Wash thoroughly after handling. Before use, the user must review the complete Safety Data Sheet, which has been sent via email to your institution.

WARRANTY AND LIMITATION OF REMEDY  
Buyer agrees to purchase the material subject to Cayman's Terms and Conditions. Complete Terms and Conditions including Warranty and Limitation of Liability information can be found on our website.

Copyright Cayman Chemical Company, 11/15/2023

CAYMAN CHEMICAL  
1180 EAST ELLSWORTH RD  
ANN ARBOR, MI 48108 · USA  
PHONE: [800] 364-9897  
[734] 971-3335  
FAX: [734] 971-3640  
CUSTSERV@CAYMANCHEM.COM  
WWW.CAYMANCHEM.COM

# PRODUCT INFORMATION



## Description

---

Nod2 is a member of the apoptosis regulating protein family that has caspase recruitment-domains (CARDs) and also includes Apaf-1 and Nod1.<sup>1</sup> Nod2 contains two N-terminal CARDs, a nucleotide binding domain (NBD), and multiple C-terminal leucine-rich repeats (LRRs). Nod2 is expressed in monocytes whereas Nod1 (CARD4) is expressed in multiple tissues.<sup>1-4</sup> Both Nod1 and Nod2 act as intracellular receptors for bacterial lipopolysaccharides, activate NF- $\kappa$ B, and contribute to inflammatory bowel disease.<sup>3,5-7</sup> A frameshift mutation in the NOD2 gene is associated with susceptibility to Crohn's disease, possibly by causing truncation of the tenth LRR.<sup>8,9</sup> Cayman Chemical's NOD2 Monoclonal Antibody can be used for Western blot and immunohistochemical analysis of Nod2 on samples of human origin. The antibody will also recognize three Nod2 polymorphisms: L1007finsC, G908R, and R702W.<sup>2</sup>

## References

---

1. Ogura, Y., Inohara, N., Benito, A., *et al.* Nod2, a Nod1/Apaf-1 family member that is restricted to monocytes and activates NF- $\kappa$ B. *J. Biol. Chem.* **276**(7), 4812-4818 (2001).
2. Ogura, Y., Lala, S., Xin, W., *et al.* Expression of NOD2 in Paneth cells: A possible link to Crohn's ileitis. *Gut* **52**, 1591-1597 (2003).
3. Bertin, J., Nir, W.-J., Fischer, C.M., *et al.* Human CARD4 protein is a novel CED-4/Apaf-1 cell death family member that activates NF- $\kappa$ B. *J. Biol. Chem.* **274**(19), 12955-12958 (1999).
4. Gutierrez, O., Pipaon, C., Inohara, N., *et al.* Induction of Nod2 in myelomonocytic and intestinal epithelial cells *via* nuclear factor- $\kappa$ B activation. *J. Biol. Chem.* **277**(44), 41701-41705 (2002).
5. Inohara, N., Koseki, T., del Peso, L., *et al.* Nod1, an Apaf-1-like activator of caspase-9 and nuclear factor- $\kappa$ B. *J. Biol. Chem.* **274**(21), 14560-14567 (1999).
6. Inohara, N., Ogura, Y., Chen, F.F., *et al.* Human NOD1 confers responsiveness to bacterial lipopolysaccharides. *J. Biol. Chem.* **276**(4), 2551-2554 (2001).
7. Inohara, N., Koseki, T., Lin, J., *et al.* An induced proximity model for NF- $\kappa$ B activation in the Nod1/RICK and RIP signaling pathways. *J. Biol. Chem.* **275**(36), 27823-27831 (2000).
8. Ogura, Y., Bonen, D.K., Inohara, N., *et al.* A frameshift mutation in NOD2 associated with susceptibility to Crohn's disease. *Nature* **411**, 603-606 (2001).
9. Hugot, J.-P., Chamaillard, M., Zouali, H., *et al.* Association of NOD2 leucine-rich repeat variants with susceptibility to Crohn's disease. *Nature* **411**, 599-603 (2001).

CAYMAN CHEMICAL  
1180 EAST ELLSWORTH RD  
ANN ARBOR, MI 48108 · USA  
PHONE: [800] 364-9897  
[734] 971-3335  
FAX: [734] 971-3640  
CUSTSERV@CAYMANCHEM.COM  
WWW.CAYMANCHEM.COM