



SZABO SCANDIC

Part of Europa Biosite

Produktinformation



Forschungsprodukte & Biochemikalien



Zellkultur & Verbrauchsmaterial



Diagnostik & molekulare Diagnostik



Laborgeräte & Service

Weitere Information auf den folgenden Seiten!
See the following pages for more information!



Lieferung & Zahlungsart

siehe unsere [Liefer- und Versandbedingungen](#)

Zuschläge

- Mindermengenzuschlag
- Trockeneiszuschlag
- Gefahrgutzuschlag
- Expressversand

SZABO-SCANDIC HandelsgmbH

Quellenstraße 110, A-1100 Wien

T. +43(0)1 489 3961-0

F. +43(0)1 489 3961-7

mail@szabo-scandic.com

www.szabo-scandic.com

[linkedin.com/company/szaboscandic](https://www.linkedin.com/company/szaboscandic) 

PRODUCT INFORMATION



Prorenin (human, recombinant)

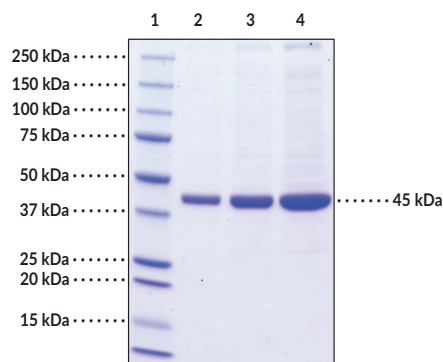
Item No. 10007599

Overview and Properties

| | |
|-------------------------------|---|
| Synonyms: | Angiotensinogenase, Angiotensin forming enzyme |
| Source: | Recombinant human enzyme expressed in HEK cells |
| Amino Acids: | 1-406 (full length) |
| Uniprot No.: | P00797 |
| Molecular Weight: | 45 kDa |
| Storage: | -80°C (as supplied); avoid freeze/thaw cycles by aliquoting protein |
| Stability: | ≥1 year |
| Purity: | ≥90% estimated by SDS-PAGE |
| Supplied in: | 50 mM Tris-HCl, pH 8.0, with 150 mM sodium chloride and 5% glycerol |
| Protein Concentration: | <i>batch specific</i> mg/ml |

Information represents the product specifications. Batch specific analytical results are provided on each certificate of analysis.

Image



Lane 1: MW Markers
Lane 2: Prorenin (1 µg)
Lane 3: Prorenin (2 µg)
Lane 4: Prorenin (4 µg)

SDS-PAGE Analysis of Prorenin.

Representative gel image shown; actual purity may vary between each batch.

Description

Prorenin is the inactive precursor of renin, which is a key enzyme in the regulation of blood pressure and electrolyte balance. In renal juxtaglomerular cells, sequential cleavage of the N-terminal 20 and 46 amino acids of preprorenin produces prorenin and active renin, respectively.¹ Renin catalyzes the conversion of angiotensinogen to angiotensin I.² Prorenin exhibits 5-10% of the proteolytic activity of renin, however, the blood circulating levels are 10 times higher.^{3,4}

References

- Holzman, T.F., Chung, C.C., Edalji, R., *et al.* *J. Protein Chem.* **9(6)**, 663-672 (1990).
- Imai, T., Miyazaki, H., Hirose, S., *et al.* *Proc. Natl. Acad. Sci. USA* **80**, 7405-7409 (1983).
- Sealey, J.E., Atlas, S.A., and Laragh, J.H. *Endocr. Rev.* **1(4)**, 365-391 (1980).
- Heinrikson, R.L., Hui, J., Zürcher-Neely, H., *et al.* *Am. J. Hypertens.* **2**, 367-380 (1989).

WARNING
THIS PRODUCT IS FOR RESEARCH ONLY - NOT FOR HUMAN OR VETERINARY DIAGNOSTIC OR THERAPEUTIC USE.

SAFETY DATA
This material should be considered hazardous until further information becomes available. Do not ingest, inhale, get in eyes, on skin, or on clothing. Wash thoroughly after handling. Before use, the user must review the complete Safety Data Sheet, which has been sent via email to your institution.

WARRANTY AND LIMITATION OF REMEDY
Buyer agrees to purchase the material subject to Cayman's Terms and Conditions. Complete Terms and Conditions including Warranty and Limitation of Liability information can be found on our website.

Copyright Cayman Chemical Company, 09/02/2021

CAYMAN CHEMICAL
1180 EAST ELLSWORTH RD
ANN ARBOR, MI 48108 · USA
PHONE: [800] 364-9897
[734] 971-3335
FAX: [734] 971-3640
CUSTSERV@CAYMANCHEM.COM
WWW.CAYMANCHEM.COM