



SZABO SCANDIC

Part of Europa Biosite

Produktinformation



Forschungsprodukte & Biochemikalien



Zellkultur & Verbrauchsmaterial



Diagnostik & molekulare Diagnostik



Laborgeräte & Service

Weitere Information auf den folgenden Seiten!
See the following pages for more information!



Lieferung & Zahlungsart

siehe unsere [Liefer- und Versandbedingungen](#)

Zuschläge

- Mindermengenzuschlag
- Trockeneiszuschlag
- Gefahrgutzuschlag
- Expressversand

SZABO-SCANDIC HandelsgmbH

Quellenstraße 110, A-1100 Wien

T. +43(0)1 489 3961-0

F. +43(0)1 489 3961-7

mail@szabo-scandic.com

www.szabo-scandic.com

[linkedin.com/company/szaboscandic](https://www.linkedin.com/company/szaboscandic) 

PRODUCT INFORMATION



C16 Sphingomyelin (d18:1/16:0)

Item No. 10007946

CAS Registry No.: 6254-89-3
Formal Name: 4-hydroxy-7S-[(1R,2E)-1-hydroxy-2-hexadecen-1-yl]-N,N,N-trimethyl-9-oxo-3,5-dioxo-8-aza-4-phosphatetracosan-1-aminium, 4-oxide, inner salt

Synonyms: Palmitoyl Sphingomyelin, N-Palmitoyl-D-erythro-Sphingosylphosphorylcholine, SM(d18:1/16:0), Sphingomyelin (d18:1/16:0)

MF: C₃₉H₇₉N₂O₆P

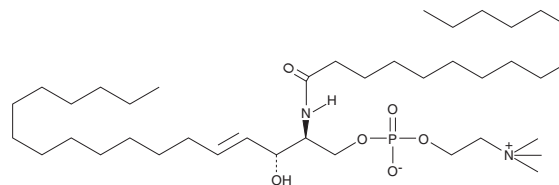
FW: 703.0

Purity: ≥98%

Supplied as: A crystalline solid

Storage: -20°C

Stability: ≥1 year



Information represents the product specifications. Batch specific analytical results are provided on each certificate of analysis.

Laboratory Procedures

C16 Sphingomyelin (d18:1/16:0) is supplied as a crystalline solid. A stock solution may be made by dissolving the C16 sphingomyelin (d18:1/16:0) in the solvent of choice, which should be purged with an inert gas. C16 Sphingomyelin (d18:1/16:0) is soluble in the organic solvent ethanol at a concentration of approximately 10 mg/ml.

Description

C16 Sphingomyelin is a naturally occurring sphingolipid.¹⁻³ Levels of C16 sphingomyelin are elevated in the prefrontal cortex and cerebellum in a rat model of diabetes induced by streptozotocin (STZ; Item No. 13104), as well as in the liver in mouse models of Niemann-Pick type C1 disease.^{1,2} Plasma levels of C16 sphingomyelin are decreased in patients with prostate cancer.³ Model membranes containing C16 sphingomyelin, 1-palmitoyl-2-oleoyl-*sn*-glycero-3-PC (POPC; Item No. 15102), and cholesterol (Item No. 9003100) have been used in the study of lipid raft dynamics and membrane organization.^{4,5}

References

1. Fiedorowicz, A., Prokopiuk, S., Zendzian-Piotrowska, M., *et al. Neuroscience* **256**, 282-291 (2014).
2. Praggastis, M., Tortelli, B., Zhang, J., *et al. J. Neurosci.* **35(21)**, 8091-8106 (2015).
3. Awwad, H.M., Ohlmann, C.H., Stoeckle, M., *et al. Biochimie* **126**, 108-114 (2016).
4. de Almeida, R.F.M., Loura, L.M.S., Fedorov, A., *et al. J. Mol. Biol.* **346(4)**, 1109-1120 (2005).
5. Halling, K.K., Ramstedt, B., Nyström, J.H., *et al. Biophys. J.* **95(8)**, 3861-3871 (2008).

WARNING

THIS PRODUCT IS FOR RESEARCH ONLY - NOT FOR HUMAN OR VETERINARY DIAGNOSTIC OR THERAPEUTIC USE.

SAFETY DATA

This material should be considered hazardous until further information becomes available. Do not ingest, inhale, get in eyes, on skin, or on clothing. Wash thoroughly after handling. Before use, the user must review the complete Safety Data Sheet, which has been sent via email to your institution.

WARRANTY AND LIMITATION OF REMEDY

Buyer agrees to purchase the material subject to Cayman's Terms and Conditions. Complete Terms and Conditions including Warranty and Limitation of Liability information can be found on our website.

Copyright Cayman Chemical Company, 04/02/2020

CAYMAN CHEMICAL

1180 EAST ELLSWORTH RD
ANN ARBOR, MI 48108 · USA

PHONE: [800] 364-9897

[734] 971-3335

FAX: [734] 971-3640

CUSTSERV@CAYMANCHEM.COM
WWW.CAYMANCHEM.COM