



SZABO SCANDIC

Part of Europa Biosite

Produktinformation



Forschungsprodukte & Biochemikalien



Zellkultur & Verbrauchsmaterial



Diagnostik & molekulare Diagnostik



Laborgeräte & Service

Weitere Information auf den folgenden Seiten!
See the following pages for more information!



Lieferung & Zahlungsart

siehe unsere [Liefer- und Versandbedingungen](#)

Zuschläge

- Mindermengenzuschlag
- Trockeneiszuschlag
- Gefahrgutzuschlag
- Expressversand

SZABO-SCANDIC HandelsgmbH

Quellenstraße 110, A-1100 Wien

T. +43(0)1 489 3961-0

F. +43(0)1 489 3961-7

mail@szabo-scandic.com

www.szabo-scandic.com

[linkedin.com/company/szaboscandic](https://www.linkedin.com/company/szaboscandic) 

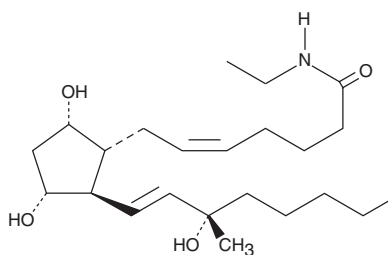
PRODUCT INFORMATION



15(S)-15-methyl Prostaglandin F_{2α} ethyl amide

Item No. 10010064

Formal Name: 9α,11α,15S-trihydroxy-15-methyl-prosta-5Z,13E-dien-1-oic acid, ethyl amide
Synonym: 15(S)-15-methyl PGF_{2α} ethyl amide
MF: C₂₃H₄₁NO₄
FW: 395.6
Purity: ≥98%
Supplied as: A solution in ethanol
Storage: -20°C
Stability: ≥1 year



Information represents the product specifications. Batch specific analytical results are provided on each certificate of analysis.

Laboratory Procedures

15(S)-15-methyl Prostaglandin F_{2α} is supplied as a solution in ethanol. To change the solvent, simply evaporate the 15(S)-15-methyl prostaglandin F_{2α} under a gentle stream of nitrogen and immediately add the solvent of choice. Solvents such as ethanol, DMSO, and dimethyl formamide purged with an inert gas can be used. The solubility of 15(S)-15-methyl prostaglandin F_{2α} in these solvents is approximately 50 mg/ml.

15(S)-15-methyl Prostaglandin F_{2α} is sparingly soluble in aqueous buffers. For maximum solubility in aqueous buffers, the 15(S)-15-methyl prostaglandin F_{2α} solution of ethanol should be diluted with the aqueous buffer of choice. The solubility of 15(S)-15-methyl prostaglandin F_{2α} in PBS (pH 7.2) is approximately 0.5 mg/ml. We do not recommend storing the aqueous solution for more than one day.

Description

15(S)-15-methyl Prostaglandin F_{2α} has been shown to have potent uterine stimulant and abortifacient properties when administered intramuscularly to induce labor.^{1,2} 15(S)-15-methyl PGF_{2α} ethyl amide is a lipophilic analog of 15(S)-15-methyl PGF_{2α} methyl ester. Prostaglandin esters are generally hydrolyzed to the free acid upon *in vivo* administration, making the methyl esters useful prodrugs.³ Hydrolysis of prostaglandin amides *in vivo* is not thoroughly established.

References

1. Carlan, S.J., Gushwa, J.P., O'Brien, W.F., *et al.* Effect of intramuscular 15-methyl prostaglandin F_{2α} after second-trimester delivery. *Obstet. Gynecol.* **89**, 5-9 (1997).
2. Lindblom, B., Källfelt, B., Hahlin, M., *et al.* Local prostaglandin F_{2α} injection for termination of ectopic pregnancy. *Lancet* 776-777 (1987).
3. Miller, W.L. and Sutton, M.J. Relative biological activity of certain prostaglandins and their enantiomers. *Prostaglandins* **11**, 77-84 (1976).

WARNING

THIS PRODUCT IS FOR RESEARCH ONLY - NOT FOR HUMAN OR VETERINARY DIAGNOSTIC OR THERAPEUTIC USE.

SAFETY DATA

This material should be considered hazardous until further information becomes available. Do not ingest, inhale, get in eyes, on skin, or on clothing. Wash thoroughly after handling. Before use, the user must review the complete Safety Data Sheet, which has been sent via email to your institution.

WARRANTY AND LIMITATION OF REMEDY

Buyer agrees to purchase the material subject to Cayman's Terms and Conditions. Complete Terms and Conditions including Warranty and Limitation of Liability information can be found on our website.

Copyright Cayman Chemical Company, 05/15/2023

CAYMAN CHEMICAL

1180 EAST ELLSWORTH RD
ANN ARBOR, MI 48108 · USA

PHONE: [800] 364-9897
[734] 971-3335

FAX: [734] 971-3640

CUSTSERV@CAYMANCHEM.COM
WWW.CAYMANCHEM.COM