



SZABO SCANDIC

Part of Europa Biosite

Produktinformation



Forschungsprodukte & Biochemikalien



Zellkultur & Verbrauchsmaterial



Diagnostik & molekulare Diagnostik



Laborgeräte & Service

Weitere Information auf den folgenden Seiten!
See the following pages for more information!



Lieferung & Zahlungsart

siehe unsere [Liefer- und Versandbedingungen](#)

Zuschläge

- Mindermengenzuschlag
- Trockeneiszuschlag
- Gefahrgutzuschlag
- Expressversand

SZABO-SCANDIC HandelsgmbH

Quellenstraße 110, A-1100 Wien

T. +43(0)1 489 3961-0

F. +43(0)1 489 3961-7

mail@szabo-scandic.com

www.szabo-scandic.com

[linkedin.com/company/szaboscandic](https://www.linkedin.com/company/szaboscandic) 

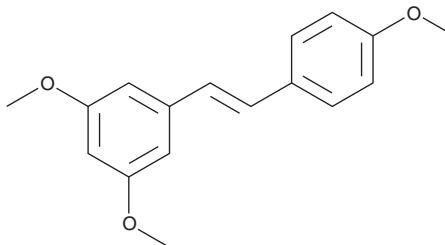
PRODUCT INFORMATION



trans-trismethoxy Resveratrol

Item No. 10188

CAS Registry No.: 22255-22-7
Formal Name: 1,3-dimethoxy-5-[(1E)-2-(4-methoxyphenyl)ethenyl]-benzene
Synonyms: (E)-5-[2-(4-hydroxyphenyl)ethenyl]-1,3-benzene diol, TMS, *trans*-3,5,4'-trimethoxystilbene
MF: C₁₇H₁₈O₃
FW: 270.3
Purity: ≥98%
UV/Vis.: λ_{max}: 218, 306, 319 nm
Supplied as: A crystalline solid
Storage: -20°C
Stability: ≥2 years



Information represents the product specifications. Batch specific analytical results are provided on each certificate of analysis.

Laboratory Procedures

trans-trismethoxy Resveratrol is supplied as a crystalline solid. A stock solution may be made by dissolving the *trans*-trismethoxy resveratrol in an organic solvent purged with an inert gas. *trans*-trismethoxy Resveratrol is soluble in organic solvents such as ethanol, DMSO, and dimethyl formamide (DMF). The solubility of *trans*-trismethoxy resveratrol in these solvents is approximately 10 mg/ml in ethanol and 50 mg/ml in DMSO and DMF.

Description

trans-trismethoxy Resveratrol is a polyketide synthase-derived stilbene originally isolated from *Virola cuspidata* that has diverse biological activities.¹⁻⁴ It is cytotoxic to several cancer cell lines, including PC3, KB, HT-29, SW480, and HL-60 cells (IC50s =3.6, 10.2, 16.1, 54, and 2.5 μM, respectively).² *trans*-trismethoxy Resveratrol (15 μM) inhibits TNF-α-induced activation of NF-κB in HEK293T cells in a reporter assay.³ It inhibits angiogenesis in zebrafish embryos when used at a concentration of 0.1 μM.⁴

References

1. Austin, M.B. and Noel, J.P. The chalcone synthase superfamily of type III polyketide synthases. *Nat. Prod. Rep.* **20**(1), 79-110 (2003).
2. Aldawsari, F.S. and Velázquez-Martínez, C.A. 3,4',5-*trans*-Trimethoxystilbene; a natural analogue of resveratrol with enhanced anticancer potency. *Invest. New Drugs* **33**(3), 775-786 (2015).
3. Heynekamp, J.J., Weber, W.M., Hunsaker, L.A., et al. Substituted *trans*-stilbenes, including analogues of the natural product resveratrol, inhibit the human tumor necrosis factor alpha-induced activation of transcription factor nuclear factor kappaB. *J. Med. Chem.* **49**(24), 7182-7189 (2006).
4. Belleri, M., Ribatti, D., Nicoli, S., et al. Antiangiogenic and vascular-targeting activity of the microtubule-destabilizing *trans*-resveratrol derivative 3,5,4'-trimethoxystilbene. *Mol. Pharmacol.* **67**(5), 1451-1459 (2005).

WARNING

THIS PRODUCT IS FOR RESEARCH ONLY - NOT FOR HUMAN OR VETERINARY DIAGNOSTIC OR THERAPEUTIC USE.

SAFETY DATA

This material should be considered hazardous until further information becomes available. Do not ingest, inhale, get in eyes, on skin, or on clothing. Wash thoroughly after handling. Before use, the user must review the complete Safety Data Sheet, which has been sent via email to your institution.

WARRANTY AND LIMITATION OF REMEDY

Buyer agrees to purchase the material subject to Cayman's Terms and Conditions. Complete Terms and Conditions including Warranty and Limitation of Liability information can be found on our website.

Copyright Cayman Chemical Company, 06/09/2021

CAYMAN CHEMICAL

1180 EAST ELLSWORTH RD
ANN ARBOR, MI 48108 · USA

PHONE: [800] 364-9897
[734] 971-3335

FAX: [734] 971-3640

CUSTSERV@CAYMANCHEM.COM
WWW.CAYMANCHEM.COM