



SZABO SCANDIC

Part of Europa Biosite

Produktinformation



Forschungsprodukte & Biochemikalien



Zellkultur & Verbrauchsmaterial



Diagnostik & molekulare Diagnostik



Laborgeräte & Service

Weitere Information auf den folgenden Seiten!
See the following pages for more information!



Lieferung & Zahlungsart

siehe unsere [Liefer- und Versandbedingungen](#)

Zuschläge

- Mindermengenzuschlag
- Trockeneiszuschlag
- Gefahrgutzuschlag
- Expressversand

SZABO-SCANDIC HandelsgmbH

Quellenstraße 110, A-1100 Wien

T. +43(0)1 489 3961-0

F. +43(0)1 489 3961-7

mail@szabo-scandic.com

www.szabo-scandic.com

[linkedin.com/company/szaboscandic](https://www.linkedin.com/company/szaboscandic) 

PRODUCT INFORMATION



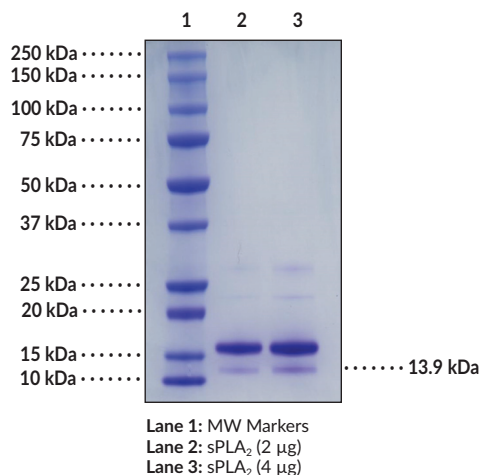
sPLA₂ (human, recombinant type IIA) Item No. 10206

Overview and Properties

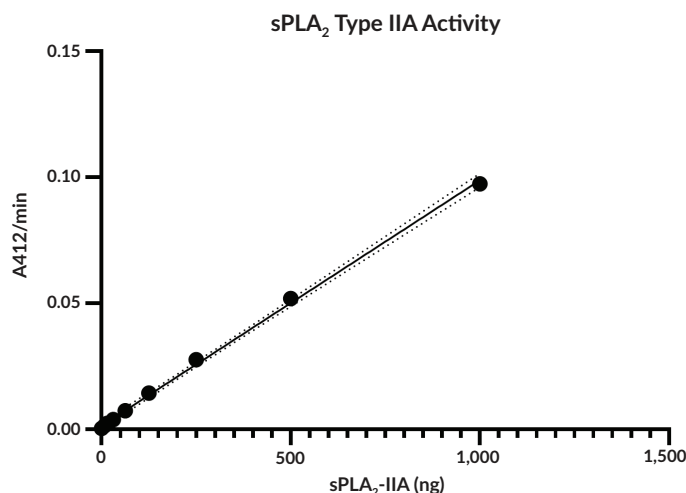
Synonyms:	Non-Pancreatic Secretory Phospholipase A ₂ , Phosphatidylcholine 2-Acylhydrolase 2A, PLA2G2A, Secretory Phospholipase A ₂ (Group IIA), sPLA ₂ -IIA
Source:	Active recombinant human sPLA ₂ (Type IIA) expressed in <i>E. coli</i>
Amino Acids:	1-124; variant N1A
Uniprot No.:	P14555
Molecular Weight:	13.9 kDa
Storage:	-80°C (as supplied)
Stability:	≥1 year
Purity:	≥85% estimated by SDS-PAGE
Supplied in:	50 mM Tris-HCl, pH 7.6, with 100 mM sodium chloride and 10 mM calcium chloride
Protein Concentration:	<i>batch specific</i> mg/ml
Activity:	<i>batch specific</i> U/ml
Specific Activity:	<i>batch specific</i> U/mg
Unit Definition:	One unit is defined as the amount of enzyme required to hydrolyze 1 nmol of diheptanoyl thio-PC per minute at 37°C in 25 mM Tris-HCl, pH 7.5, containing 10 mM calcium chloride, 100 mM potassium chloride, 0.3 mM Triton X-100, 0.44 mM DTNB, and 1.48 mM diheptanoyl thio-PC.

Information represents the product specifications. Batch specific analytical results are provided on each certificate of analysis.

Images



SDS-PAGE Analysis of sPLA₂.



sPLA₂ Type IIA activity was determined using Cayman's sPLA₂ Assay Kit (Item No. 765001) with 1.48 mM diheptanoyl thio-PC as the substrate.

WARNING
THIS PRODUCT IS FOR RESEARCH ONLY - NOT FOR HUMAN OR VETERINARY DIAGNOSTIC OR THERAPEUTIC USE.

SAFETY DATA
This material should be considered hazardous until further information becomes available. Do not ingest, inhale, get in eyes, on skin, or on clothing. Wash thoroughly after handling. Before use, the user must review the complete Safety Data Sheet, which has been sent via email to your institution.

WARRANTY AND LIMITATION OF REMEDY
Buyer agrees to purchase the material subject to Cayman's Terms and Conditions. Complete Terms and Conditions including Warranty and Limitation of Liability information can be found on our website.

Copyright Cayman Chemical Company, 07/18/2022

CAYMAN CHEMICAL
1180 EAST ELLSWORTH RD
ANN ARBOR, MI 48108 · USA
PHONE: [800] 364-9897
[734] 971-3335
FAX: [734] 971-3640
CUSTSERV@CAYMANCHEM.COM
WWW.CAYMANCHEM.COM

PRODUCT INFORMATION



Description

Secretory phospholipase A₂ (sPLA₂) (Type IIA) is a calcium-dependent PLA₂ superfamily member that is encoded by *PLA2G2A* in humans.¹ It is composed of a highly-conserved calcium-binding loop, a catalytic domain, sPLA₂ Type I- and II-specific disulfides that provide stability, and a C-terminal extension but lacks the N-terminal signal peptide found in sPLA₂ (Type IB) and sPLA₂ (Type X). sPLA₂ (Type IIA) is expressed in platelets, synovial fluid, vascular smooth muscle cells, adipose tissue, the liver, and the gut.^{2,3} sPLA₂ (Type IIA) functions in a cell- and tissue type-specific manner, preferentially hydrolyzing bacterial membrane phosphatidylglycerol (PG) and phosphatidylethanolamine (PE) as a mechanism of host defense. sPLA₂ (Type IIA) is upregulated at sites of acute and chronic inflammation where it generates lysophosphatidic acid and arachidonic acid, which is further metabolized to inflammatory lipid mediators and a variety of eicosanoid autocrine and paracrine signaling molecules.⁴ Plasma levels of sPLA₂ (Type IIA) are associated with the presence of sepsis and are increased in patients with rheumatoid arthritis, acute coronary syndrome, asthma, or inflammatory bowel disease (IBD). Cayman's sPLA₂ (human, recombinant Type IIA) protein contains an asparagine to alanine substitution at position 1 to ensure proper removal of the N-terminal methionine during protein expression. Cayman's sPLA₂ (human, recombinant Type IIA) can be used for enzyme activity assays. The specific activity of Cayman's sPLA₂ (human, recombinant Type IIA) was established using Cayman's sPLA₂ Assay Kit (Item No. 765001) with 1.48 mM 1,2-bis(heptanoylthio) glycerophosphocholine (Item No. 62235) as the substrate.

References

1. Murakami, M., Taketomi, Y., Sato, H., *et al.* Secreted phospholipase A₂ revisited. *J. Biochem.* **150**(3), 233-255 (2011).
2. Kuefner, M.S., Stephenson, E., Savikj, M., *et al.* Group IIA secreted phospholipase A2 (PLA2G2A) augments adipose tissue thermogenesis. *FASEB J.* **35**(10), e21881 (2021).
3. Cupillard, L., Koumanov, K., Mattéi, M.G., *et al.* Cloning, chromosomal mapping, and expression of a novel human secretory phospholipase A₂. *J. Biol. Chem.* **272**(25), 15745-15752 (1997).
4. Scott, K.F., Mann, T.J., Fatima, S., *et al.* Human group IIA phospholipase A₂-Three decades on from its discovery. *Molecules* **26**(23), 7267 (2021).

CAYMAN CHEMICAL
1180 EAST ELLSWORTH RD
ANN ARBOR, MI 48108 · USA
PHONE: [800] 364-9897
[734] 971-3335
FAX: [734] 971-3640
CUSTSERV@CAYMANCHEM.COM
WWW.CAYMANCHEM.COM