



SZABO SCANDIC

Part of Europa Biosite

Produktinformation



Forschungsprodukte & Biochemikalien



Zellkultur & Verbrauchsmaterial



Diagnostik & molekulare Diagnostik



Laborgeräte & Service

Weitere Information auf den folgenden Seiten!
See the following pages for more information!



Lieferung & Zahlungsart

siehe unsere [Liefer- und Versandbedingungen](#)

Zuschläge

- Mindermengenzuschlag
- Trockeneiszuschlag
- Gefahrgutzuschlag
- Expressversand

SZABO-SCANDIC HandelsgmbH

Quellenstraße 110, A-1100 Wien

T. +43(0)1 489 3961-0

F. +43(0)1 489 3961-7

mail@szabo-scandic.com

www.szabo-scandic.com

[linkedin.com/company/szaboscandic](https://www.linkedin.com/company/szaboscandic) 

PRODUCT INFORMATION



CD5 Monoclonal FITC Antibody (Clone CRIS1)

Item No. 10232

Overview and Properties

| | |
|--------------------------|--|
| Contents: | This vial contains 300 µg of affinity-purified monoclonal antibody. |
| Synonyms: | Leu1, T1, Tp67 |
| Cross Reactivity: | (+) Human CD5 |
| Form: | Liquid |
| Storage: | -20°C (as supplied) |
| Stability: | ≥1 year |
| Storage Buffer: | 500 µl PBS, pH 7.2, with 50% glycerol, 0.1% BSA, and 0.02% sodium azide |
| Clone: | CRIS1 |
| Host: | Mouse |
| Isotype: | IgG2a |
| Applications: | Flow cytometry (FC), immunofluorescence (IF), and immunohistochemistry (IHC) (frozen sections); the recommended starting concentration for FC is 1-3 µg/test and 1-10 µg/ml for IF and IHC (frozen sections). Not recommended for IHC (paraffin-embedded tissue) or Western blot. Other applications were not tested, therefore optimal working concentration/dilution should be determined empirically. |

Images

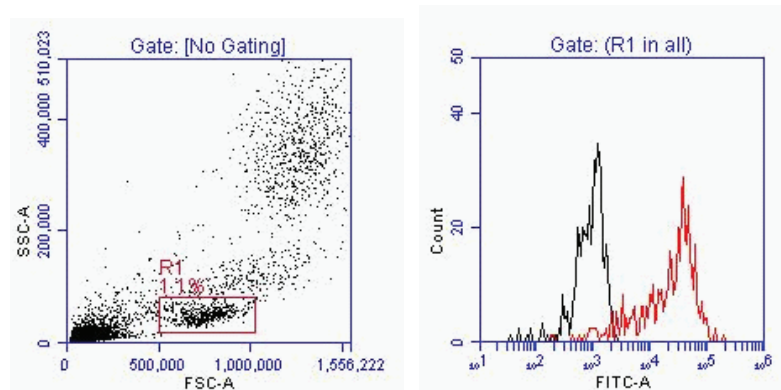


Figure 1: CD5 Monoclonal Antibody FITC (3 µg) was placed in a 1.5 ml tube followed by 50 µl human whole blood, mixed two seconds by vortex, and set at room temperature in the dark for 30 minutes. To this was added 1 ml RBC Lysis Buffer. The cell suspension was mixed again and incubated 10 minutes in the dark and read on an Accuri C6 cytometer. Fluorescein fluorescence (Panel B) from isotype control (left) and CD5 Monoclonal Antibody FITC (right) was generated from cell gate R1 (Panel A). CD5 Monoclonal FITC (3 µg) labeled 80% of the lymphocytes in the R1 gate. Enough antibody for 100 x 3 µg tests is provided per vial.

WARNING
THIS PRODUCT IS FOR RESEARCH ONLY - NOT FOR HUMAN OR VETERINARY DIAGNOSTIC OR THERAPEUTIC USE.

SAFETY DATA
This material should be considered hazardous until further information becomes available. Do not ingest, inhale, get in eyes, on skin, or on clothing. Wash thoroughly after handling. Before use, the user must review the [complete](#) Safety Data Sheet, which has been sent via email to your institution.

WARRANTY AND LIMITATION OF REMEDY
Buyer agrees to purchase the material subject to Cayman's Terms and Conditions. Complete Terms and Conditions including Warranty and Limitation of Liability information can be found on our website.

Copyright Cayman Chemical Company, 06/30/2023

CAYMAN CHEMICAL
1180 EAST ELLSWORTH RD
ANN ARBOR, MI 48108 · USA
PHONE: [800] 364-9897
[734] 971-3335
FAX: [734] 971-3640
CUSTSERV@CAYMANCHEM.COM
WWW.CAYMANCHEM.COM

PRODUCT INFORMATION



Description

This monoclonal antibody is labeled with fluorescein and intended for direct labeling of human CD5-expressing cells. CD5 is a type I transmembrane glycoprotein ($M_r = 67$ kDa), expressed on mature T-cells, the majority of thymocytes and B1a-subpopulation of B-cells.¹ CD5 is a marker of lymphocytes in autoimmune disorders (rheumatoid arthritis, systemic lupus erythematosus), B-cell chronic leukemia, T-cell acute lymphoblastic leukemia and small lymphocytic and mantle cell non-Hodgkin's lymphoma.

Reference

1. Alberola-Ila, J., Places, L., Cantrell, D.A., *et al.* Intracellular events involved in CD5-induced human T cell activation and proliferation. *J. Immunol.* **148(5)**, 1287-1293 (1992).

CAYMAN CHEMICAL
1180 EAST ELLSWORTH RD
ANN ARBOR, MI 48108 · USA
PHONE: [800] 364-9897
[734] 971-3335
FAX: [734] 971-3640
CUSTSERV@CAYMANCHEM.COM
WWW.CAYMANCHEM.COM