



# SZABO SCANDIC

Part of Europa Biosite

## Produktinformation



Forschungsprodukte & Biochemikalien



Zellkultur & Verbrauchsmaterial



Diagnostik & molekulare Diagnostik



Laborgeräte & Service

Weitere Information auf den folgenden Seiten!  
See the following pages for more information!



### Lieferung & Zahlungsart

siehe unsere [Liefer- und Versandbedingungen](#)

### Zuschläge

- Mindermengenzuschlag
- Trockeneiszuschlag
- Gefahrgutzuschlag
- Expressversand

### SZABO-SCANDIC HandelsgmbH

Quellenstraße 110, A-1100 Wien

T. +43(0)1 489 3961-0

F. +43(0)1 489 3961-7

[mail@szabo-scandic.com](mailto:mail@szabo-scandic.com)

[www.szabo-scandic.com](http://www.szabo-scandic.com)

[linkedin.com/company/szaboscandic](https://www.linkedin.com/company/szaboscandic) 

# PRODUCT INFORMATION



## ASH2L (human recombinant)

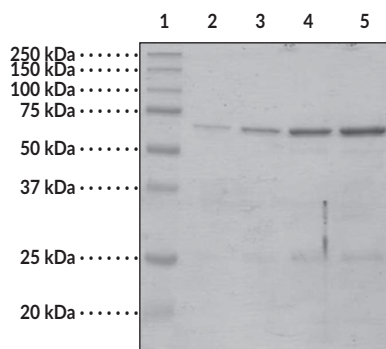
Item No. 10946

### Overview and Properties

<b>Synonyms:</b>	Absent, small, or homeotic discs 2-like, Set1/Ash2 Histone Methyltransferase Complex Subunit Ash2 Isoform A
<b>Source:</b>	Recombinant protein expressed in <i>E. coli</i> . An N-terminal hexahistidine tag and SUMOpro tag were removed by cleavage with SUMO Protease 1 (Ulp1). <i>SUMOpro and SUMO Protease 1 were used under non-exclusive license from LifeSensors, Inc. www.lifesensors.com.</i>
<b>Amino Acids:</b>	96-628
<b>Molecular Weight:</b>	60.1 kDa
<b>Storage:</b>	-80°C (as supplied)
<b>Stability:</b>	≥6 months
<b>Supplied in:</b>	50 mM Tris, pH 8.0, with 150 mM sodium chloride and 20% glycerol
<b>Protein Concentration:</b>	<i>batch specific</i> mg/ml
<b>Activity:</b>	Activity was demonstrated by a radiometric assay of the MLL1 complex (ASH2L, WDR5, RbBP5, and MLL1) (Cayman Item No. 10756) and MLL1 complex (ASH2L, WDR5, RbBP5, MLL1, and DPY30) (Cayman Item No. 10945) using [ <sup>3</sup> H]-S-adenosylmethionine and Core Histones (Cayman Item No. 11010) which specifically methylates Histone H3.

Information represents the product specifications. Batch specific analytical results are provided on each certificate of analysis.

### Image



Lane 1: MW Markers  
Lane 2: ASH2L (1 μg)  
Lane 3: ASH2L (2 μg)  
Lane 4: ASH2L (4 μg)  
Lane 5: ASH2L (6 μg)

Representative gel image shown; actual purity may vary between each batch.

WARNING  
THIS PRODUCT IS FOR RESEARCH ONLY - NOT FOR HUMAN OR VETERINARY DIAGNOSTIC OR THERAPEUTIC USE.

SAFETY DATA  
This material should be considered hazardous until further information becomes available. Do not ingest, inhale, get in eyes, on skin, or on clothing. Wash thoroughly after handling. Before use, the user must review the complete Safety Data Sheet, which has been sent via email to your institution.

WARRANTY AND LIMITATION OF REMEDY  
Buyer agrees to purchase the material subject to Cayman's Terms and Conditions. Complete Terms and Conditions including Warranty and Limitation of Liability information can be found on our website.

Copyright Cayman Chemical Company, 06/18/2021

CAYMAN CHEMICAL  
1180 EAST ELLSWORTH RD  
ANN ARBOR, MI 48108 · USA  
PHONE: [800] 364-9897  
[734] 971-3335  
FAX: [734] 971-3640  
CUSTSERV@CAYMANCHEM.COM  
WWW.CAYMANCHEM.COM

# PRODUCT INFORMATION



## Description

---

ASH2L is the human homolog of the *Drosophila* absent, small or homeotic discs 2 (*ash2*) gene product, a member of the trithorax group (TrxG) of proteins.<sup>1</sup> The TrxG gene products in *Drosophila* and their mammalian homologs are responsible for controlling gene transcription. The ASH2L protein is a component of various multisubunit protein complexes, including the large complex of proteins associated with the SET1 (MLL) family of lysine methyltransferases.<sup>2</sup> ASH2L, along with WDR5 and RbBP5, form the human MLL1 core protein complex.<sup>3</sup> MLL1-5 protein complexes catalyze the di- and trimethylation of histone H3 at lysine 4 (H3K4me2/me3), leading to the maintenance of global H3K4 trimethylation.<sup>4</sup> Post-translational modifications of ASH2L have also been described showing methylation of Arg-296 by protein-arginine methyltransferase 1 (PRMT1) *in vitro* and in cells and by PRMT5 *in vitro*.<sup>5</sup> Further experimental evidence in rats suggests that ASH2L cooperates with Ha-RAS to transform rat embryonic fibroblasts, implicating ASH2L as a novel oncoprotein.<sup>6</sup>

## References

---

1. Wang, J., Zhou, Y., Yin, B., *et al.* *J. Mol. Med.* **79**(7), 399-405 (2001).
2. Steward, M.M., Lee, J.S., O'Donovan, A., *et al.* *Nat. Struct. Mol. Biol.* **13**(9), 852-4 (2009).
3. Dou, Y., Milne, T.A., Ruthenburg, A.J., *et al.* *Nat. Struct. Mol. Biol.* **13**(8), 713-9 (2006).
4. Wang, P., Lin, C., Smith, E.R., *et al.* *Mol. Cell. Biol.* **29**(22), 6074-85 (2009).
5. Butler, J.S., Zurita-Lopez, Cl., Clarke, S.G., *et al.* *J. Biol. Chem.* **286**(14), 12234-44 (2011).
6. Lüscher-Firzlaff, J., Gawlista, I., Vervoorts, J., *et al.* *Cancer Res.* **68**(3), 749-58 (2008).

CAYMAN CHEMICAL  
1180 EAST ELLSWORTH RD  
ANN ARBOR, MI 48108 · USA  
PHONE: [800] 364-9897  
[734] 971-3335  
FAX: [734] 971-3640  
CUSTSERV@CAYMANCHEM.COM  
WWW.CAYMANCHEM.COM