



SZABO SCANDIC

Part of Europa Biosite

Produktinformation



Forschungsprodukte & Biochemikalien



Zellkultur & Verbrauchsmaterial



Diagnostik & molekulare Diagnostik



Laborgeräte & Service

Weitere Information auf den folgenden Seiten!
See the following pages for more information!



Lieferung & Zahlungsart

siehe unsere [Liefer- und Versandbedingungen](#)

Zuschläge

- Mindermengenzuschlag
- Trockeneiszuschlag
- Gefahrgutzuschlag
- Expressversand

SZABO-SCANDIC HandelsgmbH

Quellenstraße 110, A-1100 Wien

T. +43(0)1 489 3961-0

F. +43(0)1 489 3961-7

mail@szabo-scandic.com

www.szabo-scandic.com

[linkedin.com/company/szaboscandic](https://www.linkedin.com/company/szaboscandic) 

PRODUCT INFORMATION



Wedelolactone

Item No. 11796

CAS Registry No.: 524-12-9
Formal Name: 1,8,9-trihydroxy-3-methoxy-6H-benzofuro[3,2-c][1]benzopyran-6-one

Synonym: IKK Inhibitor II

MF: C₁₆H₁₀O₇

FW: 314.3

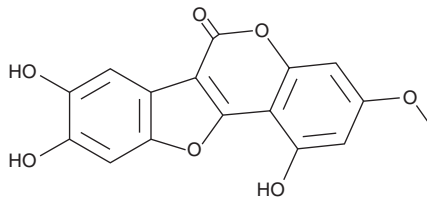
Purity: ≥98%

UV/Vis.: λ_{max}: 253, 351 nm

Supplied as: A crystalline solid

Storage: -20°C

Stability: As supplied, 2 years from the QC date provided on the Certificate of Analysis, when stored properly



Laboratory Procedures

Wedelolactone is supplied as a crystalline solid. A stock solution may be made by dissolving the wedelolactone in the solvent of choice. Wedelolactone is soluble in organic solvents such as ethanol, DMSO, and dimethyl formamide (DMF), which should be purged with an inert gas. The solubility of wedelolactone in ethanol is approximately 20 mg/ml and approximately 30 mg/ml in DMSO and DMF.

Wedelolactone is sparingly soluble in aqueous buffers. For maximum solubility in aqueous buffers, wedelolactone should first be dissolved in DMSO and then diluted with the aqueous buffer of choice. Wedelolactone has a solubility of approximately 0.5 mg/ml in a 1:1 solution of DMSO:PBS (pH 7.2) using this method. We do not recommend storing the aqueous solution for more than one day.

Description

Wedelolactone is a natural coumestan originally isolated from plants used in herbal therapies. It inhibits NF-κB signaling at the level of IKK action, resulting in suppression of NF-κB-mediated gene expression at concentrations of 1-100 μM.¹⁻³ Wedelolactone can also inhibit hepatitis C virus NS5B RNA-dependent RNA polymerase *in vitro* (IC₅₀ = 36 μM), STAT1 dephosphorylation (50 μM), and EZH2-EED interactions (K_d = 2.8 μM).⁴⁻⁶ Prolonged incubation of HepG2 liver cells with wedelolactone alters lipid metabolism through increased expression of AMPK, PPARα, lipoprotein lipase, and low-density lipoprotein receptor.⁷

References

1. Kobori, M., Yang, Z., Gong, D., *et al.* *Cell Death Differ.* **11(1)**, 123-130 (2004).
2. Yuan, F., Chen, J., Sun, P., *et al.* *J. Biomed. Sci.* **20:84**, (2013).
3. Alquézar, C., de la Encarnación, A., Moreno, F., *et al.* *J. Psychiatry Neurosci.* **41(1)**, (2016).
4. Kaushik-Basu, N., Bopda-Waffo, A., Talele, T.T., *et al.* *Nucleic Acids Res.* **35(5)**, 1482-1496 (2008).
5. Chen, Z., Sun, X., Shen, S., *et al.* *J. Biol. Chem.* **288(20)**, 14417-14427 (2013).
6. Chen, H., Gao, S., Li, J., *et al.* *Oncotarget* **6(15)**, 13049-13059 (2015).
7. Zhao, Y., Peng, L., Yang, L., *et al.* *PLoS One* **10(7)**, (2015).

WARNING

THIS PRODUCT IS FOR RESEARCH ONLY - NOT FOR HUMAN OR VETERINARY DIAGNOSTIC OR THERAPEUTIC USE.

SAFETY DATA

This material should be considered hazardous until further information becomes available. Do not ingest, inhale, get in eyes, on skin, or on clothing. Wash thoroughly after handling. Before use, the user must review the complete Safety Data Sheet, which has been sent via email to your institution.

WARRANTY AND LIMITATION OF REMEDY

Buyer agrees to purchase the material subject to Cayman's Terms and Conditions. Complete Terms and Conditions including Warranty and Limitation of Liability information can be found on our website.

Copyright Cayman Chemical Company, 04/19/2016

CAYMAN CHEMICAL

1180 EAST ELLSWORTH RD
ANN ARBOR, MI 48108 · USA

PHONE: [800] 364-9897

[734] 971-3335

FAX: [734] 971-3640

CUSTSERV@CAYMANCHEM.COM
WWW.CAYMANCHEM.COM