



SZABO SCANDIC

Part of Europa Biosite

Produktinformation



Forschungsprodukte & Biochemikalien



Zellkultur & Verbrauchsmaterial



Diagnostik & molekulare Diagnostik



Laborgeräte & Service

Weitere Information auf den folgenden Seiten!
See the following pages for more information!



Lieferung & Zahlungsart

siehe unsere [Liefer- und Versandbedingungen](#)

Zuschläge

- Mindermengenzuschlag
- Trockeneiszuschlag
- Gefahrgutzuschlag
- Expressversand

SZABO-SCANDIC HandelsgmbH

Quellenstraße 110, A-1100 Wien

T. +43(0)1 489 3961-0

F. +43(0)1 489 3961-7

mail@szabo-scandic.com

www.szabo-scandic.com

[linkedin.com/company/szaboscandic](https://www.linkedin.com/company/szaboscandic) 

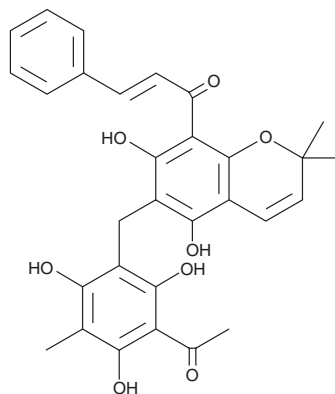
PRODUCT INFORMATION



Rottlerin

Item No. 12006

CAS Registry No.: 82-08-6
Formal Name: (2E)-1-[6-[[3-acetyl-2,4,6-trihydroxy-5-methylphenyl)methyl]-5,7-dihydroxy-2,2-dimethyl-2H-1-benzopyran-8-yl]-3-phenyl-2-propen-1-one
Synonyms: Mallotoxin, NSC 56346, NSC 94525
MF: C₃₀H₂₈O₈
FW: 516.5
Purity: ≥90%
Supplied as: A solid
Storage: -20°C
Stability: ≥2 years



Information represents the product specifications. Batch specific analytical results are provided on each certificate of analysis.

Laboratory Procedures

Rottlerin is supplied as a solid. A stock solution may be made by dissolving the rottlerin in the solvent of choice. Rottlerin is soluble in the organic solvent DMSO, which should be purged with an inert gas, at a concentration of approximately 100 mM.

Description

Rottlerin was originally identified as an inhibitor of PKCd (IC₅₀ = 3 μM), but can also inhibit CAM kinase III and a wide range of protein kinases, including PRAK and MAPKAP-K2 (IC₅₀s = 1.9 and 5 μM, respectively).^{1,2} It can act as a direct mitochondrial uncoupler, and stimulates autophagy by targeting a signaling cascade upstream of mTORC1.³ Rottlerin has also been shown to have neuroprotective effects in an MPTP animal model of Parkinson's disease.⁴

References

1. McGovern, S.L. and Shoichet, B.K. Kinase inhibitors: Not just for kinases anymore. *J. Med. Chem.* **46**, 1478-1483 (2003).
2. Davies, S.P., Reddy, H., Caivano, M., *et al.* Specificity and mechanism of action of some commonly used protein kinase inhibitors. *Biochem. J.* **351**, 95-105 (2000).
3. Balgi, A.D., Fonseca, B.D., Donohue, E., *et al.* Screen for chemical modulators of autophagy reveals novel therapeutic inhibitors of mTORC1 signaling. *PLoS One* **4(9)**, (2009).
4. Zhang, D., Anantharam, V., Kanthasamy, A., *et al.* Neuroprotective effect of protein kinase Cd inhibitor rottlerin in cell culture and animal models of Parkinson's disease. *J. Pharmacol. Exp. Ther.* **322(3)**, 913-922 (2007).

WARNING

THIS PRODUCT IS FOR RESEARCH ONLY - NOT FOR HUMAN OR VETERINARY DIAGNOSTIC OR THERAPEUTIC USE.

SAFETY DATA

This material should be considered hazardous until further information becomes available. Do not ingest, inhale, get in eyes, on skin, or on clothing. Wash thoroughly after handling. Before use, the user must review the complete Safety Data Sheet, which has been sent via email to your institution.

WARRANTY AND LIMITATION OF REMEDY

Buyer agrees to purchase the material subject to Cayman's Terms and Conditions. Complete Terms and Conditions including Warranty and Limitation of Liability information can be found on our website.

Copyright Cayman Chemical Company, 02/20/2018

CAYMAN CHEMICAL

1180 EAST ELLSWORTH RD
ANN ARBOR, MI 48108 · USA

PHONE: [800] 364-9897
[734] 971-3335

FAX: [734] 971-3640

CUSTSERV@CAYMANCHEM.COM
WWW.CAYMANCHEM.COM