



# SZABO SCANDIC

Part of Europa Biosite

## Produktinformation



Forschungsprodukte & Biochemikalien



Zellkultur & Verbrauchsmaterial



Diagnostik & molekulare Diagnostik



Laborgeräte & Service

Weitere Information auf den folgenden Seiten!  
See the following pages for more information!



### Lieferung & Zahlungsart

siehe unsere [Liefer- und Versandbedingungen](#)

### Zuschläge

- Mindermengenzuschlag
- Trockeneiszuschlag
- Gefahrgutzuschlag
- Expressversand

### SZABO-SCANDIC HandelsgmbH

Quellenstraße 110, A-1100 Wien

T. +43(0)1 489 3961-0

F. +43(0)1 489 3961-7

[mail@szabo-scandic.com](mailto:mail@szabo-scandic.com)

[www.szabo-scandic.com](http://www.szabo-scandic.com)

[linkedin.com/company/szaboscandic](https://www.linkedin.com/company/szaboscandic) 

# PRODUCT INFORMATION



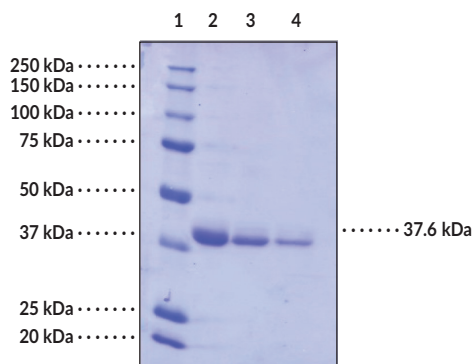
## S-Catechol O-Methyltransferase (human, recombinant)

Item No. 15563

### Overview and Properties

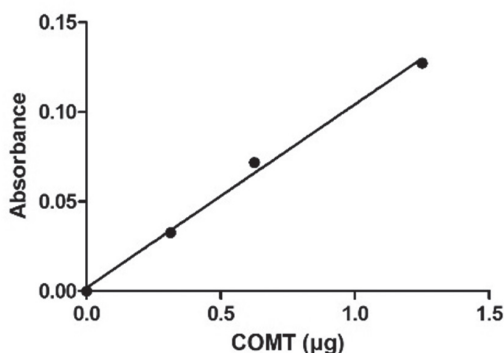
<b>Synonyms:</b>	S-COMT, Pyrocatechol-O-methyltransferase, S-Adenosyl-L-methionine:Catechol O-methyltransferase
<b>Source:</b>	Active recombinant N-terminal hexahistidine- and SUMOpro-tagged protein expressed in <i>E. coli</i>
<b>Amino Acids:</b>	2-221 (full length)
<b>Uniprot No.:</b>	P21964
<b>Molecular Weight:</b>	37.6 kDa
<b>Storage:</b>	-80°C (as supplied)
<b>Stability:</b>	≥2 years
<b>Purity:</b>	<i>batch specific</i> (≥70% estimated by SDS-PAGE)
<b>Supplied in:</b>	50 mM Hepes, pH 8.0, with 500 mM NaCl and 10% glycerol
<b>Protein Concentration:</b>	<i>batch specific</i> mg/ml
<b>Activity:</b>	<i>batch specific</i> U/ml
<b>Specific Activity:</b>	<i>batch specific</i> U/mg
<b>Unit Definition:</b>	One unit produces 1 nmol/hr of O-methylated products from 3,4-dihydroxyacetophenone (DHAP) with S-adenosyl-L-methionine (SAM) as substrate at pH 7.6, 37°C, measured by absorbance at 344 nm.

### Images



Lane 1: MW Markers  
Lane 2: S-COMT (4 µg)  
Lane 3: S-COMT (2 µg)  
Lane 4: S-COMT (1 µg)

*Representative gel image shown; actual purity may vary between each batch.*



WARNING  
THIS PRODUCT IS FOR RESEARCH ONLY - NOT FOR HUMAN OR VETERINARY DIAGNOSTIC OR THERAPEUTIC USE.

SAFETY DATA  
This material should be considered hazardous until further information becomes available. Do not ingest, inhale, get in eyes, on skin, or on clothing. Wash thoroughly after handling. Before use, the user must review the complete Safety Data Sheet, which has been sent via email to your institution.

WARRANTY AND LIMITATION OF REMEDY  
Buyer agrees to purchase the material subject to Cayman's Terms and Conditions. Complete Terms and Conditions including Warranty and Limitation of Liability information can be found on our website.

Copyright Cayman Chemical Company, 04/17/2020

CAYMAN CHEMICAL  
1180 EAST ELLSWORTH RD  
ANN ARBOR, MI 48108 · USA  
PHONE: [800] 364-9897  
[734] 971-3335  
FAX: [734] 971-3640  
CUSTSERV@CAYMANCHEM.COM  
WWW.CAYMANCHEM.COM

# PRODUCT INFORMATION



## Description

S-Catechol-O-methyltransferase (S-COMT) is the soluble cytosolic form of COMT.<sup>1</sup> A rough endoplasmic reticulum membrane-bound form of COMT (MB-COMT) is also encoded by the COMT gene but produced via a separate promoter and contains an additional 50 amino acid residues, which compose the membrane anchor region.<sup>1,2</sup> COMT is comprised of one domain with eight  $\alpha$  helices surrounding a central  $\beta$  sheet.<sup>3</sup> It is the methyltransferase responsible for transferring a methyl group from S-adenosyl-L-methionine (SAM) to a catechol hydroxyl in the inactivation or degradation of catechol-containing molecules such as catecholamines.<sup>4</sup> S-COMT is involved primarily in the inactivation of endogenous and xenobiotic catechols, such as catechol-containing hormones and carcinogenic flavonoids, and MB-COMT is involved primarily in the degradation of endogenous catecholamine neurotransmitters.<sup>4,5</sup> S-COMT is the predominant form of COMT and is found primarily in the liver and kidney but is also found in the stomach, small intestine, adrenal gland, spleen, and brain.<sup>6</sup> A valine-to-methionine substitution (Val158Met) in COMT affects its thermostability and may reduce its activity by greater than 50% in the human brain.<sup>7</sup> The Val158Met variant of COMT is associated with Parkinson's disease in an ethnicity-dependent manner.<sup>8</sup> COMT interacts with severe acute respiratory coronavirus 2 (SARS-CoV-2) non-structural protein 7 (Nsp7), which, together with Nsp8, forms the primase complex of the replicase-transcriptase complex of SARS-CoV-2.<sup>9</sup> Cayman's S-Catechol-O-Methyltransferase (human, recombinant) protein can be used for ELISA, Western blot (WB), and enzyme activity assay applications.

## References

1. Tilgmann, C. and Ulmanen, I. Purification methods of mammalian catechol-O-methyltransferases. *J. Chromatogr. B. Biomed. Appl.* **684(1-2)**, 147-161 (1996).
2. Pedro, A.Q., Bonifácio, M.J., Queiroz, J.A., et al. A novel prokaryotic expression system for biosynthesis of recombinant human membrane-bound catechol-O-methyltransferase. *J. Biotechnol.* **156(2)**, 141-146 (2014).
3. Learmonth, D.A., Kiss, L.E., and Soares-da-Silva, P. The chemistry of catechol-O-methyltransferase inhibitors. *Int. Rev. Neurobiol.* **95**, 119-162 (2010).
4. Lundström, K., Tenhunen, J., Tilgmann, C., et al. Cloning, expression and structure of catechol-O-methyltransferase. *Biochim. Biophys. Acta* **1251(1)**, 1-10 (1995).
5. Ma, Z., Liu, H., and Wu, B. Structure-based drug design of catechol-O-methyltransferase inhibitors for CNS disorders. *Br. J. Clin. Pharmacol.* **77(3)**, 410-420 (2014).
6. Karhunen, T., Tilgmann, C., Ulmanen, I., et al. Distribution of catechol-O-methyltransferase enzyme in rat tissues. *J. Histochem. Cytochem.* **42(8)**, 1079-1090 (1994).
7. Dickinson, D. and Elvevåg, B. Genes, cognition and brain through a COMT lens. *Neuroscience* **164(1)**, 72-87 (2009).
8. Wang, Y., Zou, Y., Xiao, J. et al. COMT Val158Met polymorphism and Parkinson's disease risk: A pooled analysis in different populations. *Neurol. Res.* **41(4)**, 319-325 (2019).
9. Gordon, D.E., Jang, G.M., Bouhaddou, M., et al. A SARS-CoV-2-human protein-protein interaction map reveals drug targets and potential drug-repurposing. *BioRxiv* (2020).

CAYMAN CHEMICAL  
1180 EAST ELLSWORTH RD  
ANN ARBOR, MI 48108 · USA  
PHONE: [800] 364-9897  
[734] 971-3335  
FAX: [734] 971-3640  
CUSTSERV@CAYMANCHEM.COM  
WWW.CAYMANCHEM.COM