



SZABO SCANDIC

Part of Europa Biosite

Produktinformation



Forschungsprodukte & Biochemikalien



Zellkultur & Verbrauchsmaterial



Diagnostik & molekulare Diagnostik



Laborgeräte & Service

Weitere Information auf den folgenden Seiten!
See the following pages for more information!



Lieferung & Zahlungsart

siehe unsere [Liefer- und Versandbedingungen](#)

Zuschläge

- Mindermengenzuschlag
- Trockeneiszuschlag
- Gefahrgutzuschlag
- Expressversand

SZABO-SCANDIC HandelsgmbH

Quellenstraße 110, A-1100 Wien

T. +43(0)1 489 3961-0

F. +43(0)1 489 3961-7

mail@szabo-scandic.com

www.szabo-scandic.com

[linkedin.com/company/szaboscandic](https://www.linkedin.com/company/szaboscandic) 

PRODUCT INFORMATION



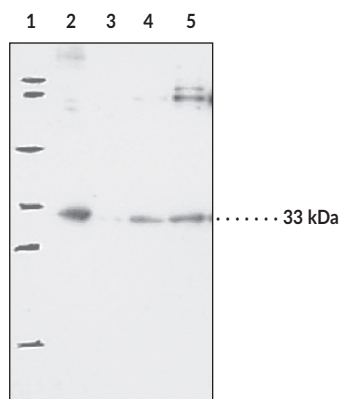
Prostaglandin E Synthase-2 (microsomal) Antibody

Item No. 160145

Overview and Properties

Contents:	This vial contains 500 µl of peptide affinity-purified polyclonal antibody.
Synonyms:	Membrane-Associated PGES-2, mPGES-2, mPGE Synthase-2, Prostaglandin H/E Isomerase-2
Immunogen:	Synthetic peptide from the internal terminal region of human mPGES-2
Species Reactivity:	(+) Human, African green monkey, bovine, mouse, ovine, and rat mPGES-2
Cross Reactivity:	(+) mPGES-2; (-) mPGES-1 and cPGES
Uniprot No.:	Q9H7Z7
Form:	Liquid
Storage:	-20°C (as supplied)
Stability:	≥3 years
Storage Buffer:	PBS, pH 7.2, with 50% glycerol and 0.02% sodium azide
Host:	Rabbit
Isotype:	IgG
Applications:	Western blot (WB) and immunohistochemistry (IHC); the recommended starting dilution is 1:200 for WB and 1:500 for IHC. For IHC with formalin-fixed paraffin embedded tissues the recommended starting dilution is 1:1,000. Other applications were not tested, therefore optimal working concentration/dilution should be determined empirically.

Image



Lane 1: Protein MW standards
Lane 2: Mouse heart homogenate (30 µg)
Lane 3: Bovine aorta homogenate (30 µg)
Lane 4: Ram seminal vesicle microsome (30 µg)
Lane 5: Cos-7 cell lysate (10 µg)

WARNING
THIS PRODUCT IS FOR RESEARCH ONLY - NOT FOR HUMAN OR VETERINARY DIAGNOSTIC OR THERAPEUTIC USE.

SAFETY DATA
This material should be considered hazardous until further information becomes available. Do not ingest, inhale, get in eyes, on skin, or on clothing. Wash thoroughly after handling. Before use, the user must review the complete Safety Data Sheet, which has been sent via email to your institution.

WARRANTY AND LIMITATION OF REMEDY
Buyer agrees to purchase the material subject to Cayman's Terms and Conditions. Complete Terms and Conditions including Warranty and Limitation of Liability information can be found on our website.

Copyright Cayman Chemical Company, 11/16/2023

CAYMAN CHEMICAL
1180 EAST ELLSWORTH RD
ANN ARBOR, MI 48108 · USA
PHONE: [800] 364-9897
[734] 971-3335
FAX: [734] 971-3640
CUSTSERV@CAYMANCHEM.COM
WWW.CAYMANCHEM.COM

PRODUCT INFORMATION



Description

Prostaglandin E synthase-2 (microsomal) (mPGES-2) is membrane-associated PGE₂-producing enzyme.^{1,2} Unlike mPGES-1, mPGES-2 does not require glutathione for catalytic activity and is activated in the presence of a broad range of reducing agents. Cayman Chemical's mPGES-2 Polyclonal Antibody can be used for Western blot applications. The antibody recognizes mPGES-2 at 33 kDa from human, mouse, sheep, cow, and monkey samples.

References

1. Watanabe, K., Kurihara, K., and Suzuki, T. Purification and characterization of membrane-bound prostaglandin E synthase from bovine heart. *Biochim. Biophys. Acta* **1439**, 406-414 (1999).
2. Tanikawa, N., Ohmiya, Y., Ohkubo, H., *et al.* Identification and characterization of a novel type of membrane-associated prostaglandin E synthase. *Biochem. Biophys. Res. Commun.* **291(4)**, 884-889 (2002).

CAYMAN CHEMICAL
1180 EAST ELLSWORTH RD
ANN ARBOR, MI 48108 · USA
PHONE: [800] 364-9897
[734] 971-3335
FAX: [734] 971-3640
CUSTSERV@CAYMANCHEM.COM
WWW.CAYMANCHEM.COM