



SZABO SCANDIC

Part of Europa Biosite

Produktinformation



Forschungsprodukte & Biochemikalien



Zellkultur & Verbrauchsmaterial



Diagnostik & molekulare Diagnostik



Laborgeräte & Service

Weitere Information auf den folgenden Seiten!
See the following pages for more information!



Lieferung & Zahlungsart

siehe unsere [Liefer- und Versandbedingungen](#)

Zuschläge

- Mindermengenzuschlag
- Trockeneiszuschlag
- Gefahrgutzuschlag
- Expressversand

SZABO-SCANDIC HandelsgmbH

Quellenstraße 110, A-1100 Wien

T. +43(0)1 489 3961-0

F. +43(0)1 489 3961-7

mail@szabo-scandic.com

www.szabo-scandic.com

[linkedin.com/company/szaboscandic](https://www.linkedin.com/company/szaboscandic) 

PRODUCT INFORMATION



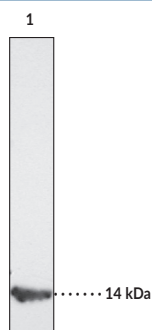
sPLA₂ (human Type IIA) Monoclonal Antibody (Clone SCACC353)

Item No. 160500

Overview and Properties

Contents:	This vial contains 350 µg of protein G-purified monoclonal antibody.
Synonyms:	Secretory Phospholipase A ₂ (human synovial)
Immunogen:	Human recombinant synovial sPLA ₂ Type IIA
Cross Reactivity:	(-) Human sPLA ₂ (type V), Bee venom sPLA ₂ (Type III)
Species Reactivity:	(+) Human sPLA ₂ (type IIA)
Uniprot No.:	P14555
Form:	Solid
Storage:	-20°C (as supplied)
Stability:	≥3 years
Storage Buffer:	PBS, pH 7.2, with 50% glycerol, 0.1% BSA and 0.02% NaN ₃
Clone:	SCACC353
Host:	Mouse
Isotype:	IgG1
Applications:	Immunoprecipitation (IP) and Western blot (WB); the recommended starting dilution is 1:150 and 1:200, respectively. ¹ Other applications were not tested, therefore optimal working concentration/dilution should be determined empirically. ^{2,3}

Image



Lane 1: Human sPLA₂ type II (250 ng)

Description

PLA₂ catalyzes the hydrolysis of phospholipids at the *sn*-2 position yielding a free fatty acid and a lysophospholipid.⁴ The release of arachidonic acid from membrane phospholipids by PLA₂ is believed to be a key step in the control of eicosanoid production within the cell.⁵ Human synovial sPLA₂ is a secreted, 14 kDa protein which is dependent on Ca²⁺ for optimal activity. Human synovial sPLA₂ is 79% homologous to rat platelet and mouse type II sPLA₂s.

References

1. Lousse, J.-C., Defrère, S., Colette, S., et al. *Hum. Reprod.* **25**(3), 734-741 (2010).
2. Hulthe, J., Wiklund, O., Hurt-Camejo, E., et al. *Arterioscler. Thromb. Vasc. Biol.* **21**, 269-274 (2001).
3. Peilot, H., Rosengren, B., Bondjers, G., et al. *J. Biol. Chem.* **275** (30), 22895-22904 (2000).
4. Dennis, E.A. *Enzymes XVI*, 307-353 (1983).
5. Dennis, E.A. *J. Biol. Chem.* **269**, 13057-13060 (1994).

WARNING
THIS PRODUCT IS FOR RESEARCH ONLY - NOT FOR HUMAN OR VETERINARY DIAGNOSTIC OR THERAPEUTIC USE.

SAFETY DATA
This material should be considered hazardous until further information becomes available. Do not ingest, inhale, get in eyes, on skin, or on clothing. Wash thoroughly after handling. Before use, the user must review the complete Safety Data Sheet, which has been sent via email to your institution.

WARRANTY AND LIMITATION OF REMEDY
Buyer agrees to purchase the material subject to Cayman's Terms and Conditions. Complete Terms and Conditions including Warranty and Limitation of Liability information can be found on our website.

Copyright Cayman Chemical Company, 11/15/2023

CAYMAN CHEMICAL
1180 EAST ELLSWORTH RD
ANN ARBOR, MI 48108 · USA
PHONE: [800] 364-9897
[734] 971-3335
FAX: [734] 971-3640
CUSTSERV@CAYMANCHEM.COM
WWW.CAYMANCHEM.COM