



SZABO SCANDIC

Part of Europa Biosite

Produktinformation



Forschungsprodukte & Biochemikalien



Zellkultur & Verbrauchsmaterial



Diagnostik & molekulare Diagnostik



Laborgeräte & Service

Weitere Information auf den folgenden Seiten!
See the following pages for more information!



Lieferung & Zahlungsart

siehe unsere [Liefer- und Versandbedingungen](#)

Zuschläge

- Mindermengenzuschlag
- Trockeneiszuschlag
- Gefahrgutzuschlag
- Expressversand

SZABO-SCANDIC HandelsgmbH

Quellenstraße 110, A-1100 Wien

T. +43(0)1 489 3961-0

F. +43(0)1 489 3961-7

mail@szabo-scandic.com

www.szabo-scandic.com

[linkedin.com/company/szaboscandic](https://www.linkedin.com/company/szaboscandic) 

PRODUCT INFORMATION



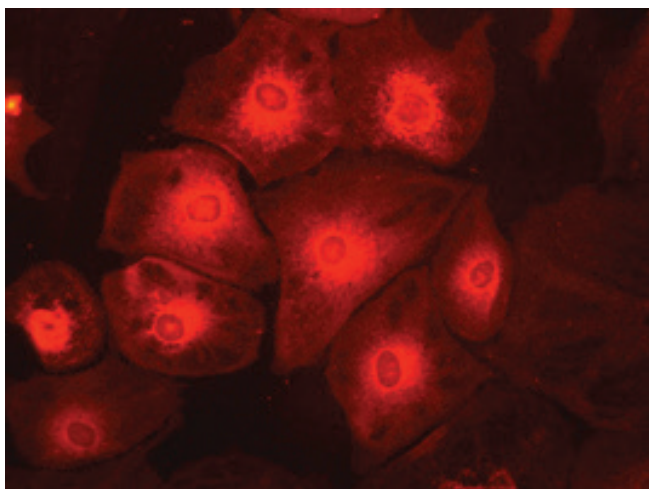
Prostaglandin I Synthase Monoclonal Antibody (Clone isn-1)

Item No. 160630

Overview and Properties

Contents:	This vial contains 250 µg of protein A-purified monoclonal antibody
Synonyms:	PGIS, Prostacyclin Synthase
Immunogen:	This antibody was raised against bovine lung prostaglandin I synthase (PGIS).
Species Reactivity:	(+) Bovine, mouse, rat, ovine, guinea pig, and rabbit
Uniprot No.:	O62698
Form:	Lyophilized
Storage:	-20°C (as supplied)
Stability:	≥5 years
Storage Buffer:	TBS, pH 7.4, when reconstituted in 250 µl of deionized water (1 mg/ml)
Clone:	isn-1
Host:	Mouse
Applications:	Immunoprecipitation (2.5 µg/ml) and immunohistochemistry (5 µg/ml); Western blot not recommended

Image



Bovine CPAE cells stained with Item No. 160630: Prostaglandin I Synthase Monoclonal Antibody (Clone Isn-1), at 15 µg/ml followed by goat anti-mouse IgG (Cy3) conjugate.

WARNING
THIS PRODUCT IS FOR RESEARCH ONLY - NOT FOR HUMAN OR VETERINARY DIAGNOSTIC OR THERAPEUTIC USE.

SAFETY DATA
This material should be considered hazardous until further information becomes available. Do not ingest, inhale, get in eyes, on skin, or on clothing. Wash thoroughly after handling. Before use, the user must review the complete Safety Data Sheet, which has been sent via email to your institution.

WARRANTY AND LIMITATION OF REMEDY
Buyer agrees to purchase the material subject to Cayman's Terms and Conditions. Complete Terms and Conditions including Warranty and Limitation of Liability information can be found on our website.

Copyright Cayman Chemical Company, 10/09/2018

CAYMAN CHEMICAL
1180 EAST ELLSWORTH RD
ANN ARBOR, MI 48108 · USA
PHONE: [800] 364-9897
[734] 971-3335
FAX: [734] 971-3640
CUSTSERV@CAYMANCHEM.COM
WWW.CAYMANCHEM.COM

PRODUCT INFORMATION



Description

PGIS catalyzes the conversion of PGH_2 to PGI_2 (prostacyclin). Human lung PGI synthase is a 56 kDa protein. The cloned bovine and human enzymes contain 500 amino acids and have a calculated molecular mass of 56,629 and 57,103, respectively.¹⁻³ There is 88% homology between human and bovine PGIS.

References

1. Miyata, A., Hara, S., Yokoyama, C., *et al.* Molecular cloning and expression of human prostacyclin synthase. *Biochem. Biophys. Res. Commun.* **200(3)**, 1728-1734 (1994).
3. Pereira, B., Wu, K.K., and Wang, L. Molecular cloning and characterization of bovine prostacyclin synthase. *Biochem. Biophys. Res. Commun.* **203(1)**, 59-66 (1994).
4. Hara, S., Miyata, A., Yokoyama, C., *et al.* Isolation and molecular cloning of prostacyclin synthase from bovine endothelial cells. *J. Biol. Chem.* **269(31)**, 19897-19903 (1994).
5. Zou, M.-H., Shi, C., and Cohen, R.A. High glucose *via* peroxynitrite causes tyrosine nitration and inactivation of prostacyclin synthase that is associated with thromboxane/prostaglandin H_2 receptor-mediated apoptosis and adhesion molecule expression in cultured human aortic endothelial cells. *Diabetes* **51(1)**, 198-203 (2002).

CAYMAN CHEMICAL
1180 EAST ELLSWORTH RD
ANN ARBOR, MI 48108 · USA
PHONE: [800] 364-9897
[734] 971-3335
FAX: [734] 971-3640
CUSTSERV@CAYMANCHEM.COM
WWW.CAYMANCHEM.COM