



SZABO SCANDIC

Part of Europa Biosite

Produktinformation



Forschungsprodukte & Biochemikalien



Zellkultur & Verbrauchsmaterial



Diagnostik & molekulare Diagnostik



Laborgeräte & Service

Weitere Information auf den folgenden Seiten!
See the following pages for more information!



Lieferung & Zahlungsart

siehe unsere [Liefer- und Versandbedingungen](#)

Zuschläge

- Mindermengenzuschlag
- Trockeneiszuschlag
- Gefahrgutzuschlag
- Expressversand

SZABO-SCANDIC HandelsgmbH

Quellenstraße 110, A-1100 Wien

T. +43(0)1 489 3961-0

F. +43(0)1 489 3961-7

mail@szabo-scandic.com

www.szabo-scandic.com

[linkedin.com/company/szaboscandic](https://www.linkedin.com/company/szaboscandic) 

PRODUCT INFORMATION

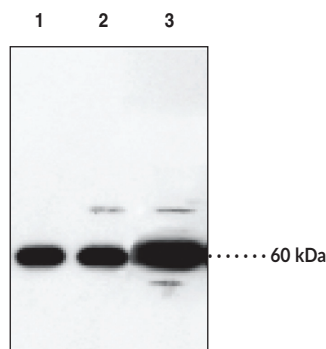


Apaf-1 Polyclonal Antibody Item No. 160780

Overview and Properties

Contents:	This vial contains 200 µl of peptide affinity-purified polyclonal antibody.
Synonym:	Apoptosis Protease-Activating Factor 1
Immunogen:	Synthetic peptide from an N-terminal region of human Apaf-1
Species Reactivity:	(+) Human and mouse
Uniprot No.:	O14727
Form:	Liquid
Storage:	-20°C (as supplied)
Stability:	≥1 year
Storage Buffer:	PBS, pH 7.2, with 0.02% sodium azide
Host:	Rabbit
Applications:	Western blot (WB); the recommended starting dilution is 1:1,000-1:2,000. A whole cell lysate from HeLa cells can be used as a positive control and a 130 kDa band should be detected. Other applications were not tested, therefore optimal working concentration/dilution should be determined empirically.

Image



Lane 1: 293 T-cell lysate
Lane 2: Apaf-1 transfected 293 T-cell lysate
Lane 3: HeLa cell lysate (50 µg)

WARNING
THIS PRODUCT IS FOR RESEARCH ONLY - NOT FOR HUMAN OR VETERINARY DIAGNOSTIC OR THERAPEUTIC USE.

SAFETY DATA
This material should be considered hazardous until further information becomes available. Do not ingest, inhale, get in eyes, on skin, or on clothing. Wash thoroughly after handling. Before use, the user must review the complete Safety Data Sheet, which has been sent via email to your institution.

WARRANTY AND LIMITATION OF REMEDY
Buyer agrees to purchase the material subject to Cayman's Terms and Conditions. Complete Terms and Conditions including Warranty and Limitation of Liability information can be found on our website.

Copyright Cayman Chemical Company, 10/23/2023

CAYMAN CHEMICAL
1180 EAST ELLSWORTH RD
ANN ARBOR, MI 48108 · USA
PHONE: [800] 364-9897
[734] 971-3335
FAX: [734] 971-3640
CUSTSERV@CAYMANCHEM.COM
WWW.CAYMANCHEM.COM

PRODUCT INFORMATION



Description

Apoptosis is related to many diseases and is induced by a family of cell death receptors and their ligands. Cell death signals are transduced by death domain containing adapter molecules and members of the caspase family of proteases. The mammalian homologues of the key cell death gene CED-4 in *C. elegans* has been identified recently from human and mouse and designated Apaf-1 (apoptosis protease-activating factor 1).^{1,2} Apaf-1 binds to cytochrome c (Apaf-2) and caspase-9 (Apaf-3), which leads to caspase-9 activation. Activated caspase-9 in turn cleaves and activates caspase-3, one of the key proteases responsible for the proteolytic cleavage of many key proteins in apoptosis.³ Apaf-1 can also associate with caspase-4 and caspase-8.⁴ Apaf-1 is ubiquitously expressed in human tissues.¹

References

1. Zou, H., Henzel, W.J., Liu, X., *et al.* Apaf-1, a human protein homologous to *C. elegans* CED-4, participates in cytochrome c-dependent activation of caspase-3. *Cell* **90**(3), 405-413 (1997).
2. Cecconi, F., Alvarez-Bolado, G., Meyer, B.I., *et al.* Apaf1 (CED-4 homolog) regulates programmed cell death in mammalian development. *Cell* **94**(6), 727-737 (1998).
3. Li, P., Nijhawan, D., Budihardjo, I., *et al.* Cytochrome c and dATP-dependent formation of Apaf-1/caspase-9 complex initiates an apoptotic protease cascade. *Cell* **91**(4), 479-489 (1997).
4. Hu, Y., Benedict, M.A., Wu, D., *et al.* Bcl-XL interacts with Apaf-1 and inhibits Apaf-1-dependent caspase-9 activation. *Proc. Natl. Acad. Sci USA* **95**(8), 4386-4391 (1998).

CAYMAN CHEMICAL
1180 EAST ELLSWORTH RD
ANN ARBOR, MI 48108 · USA
PHONE: [800] 364-9897
[734] 971-3335
FAX: [734] 971-3640
CUSTSERV@CAYMANCHEM.COM
WWW.CAYMANCHEM.COM