



# SZABO SCANDIC

Part of Europa Biosite

## Produktinformation



Forschungsprodukte & Biochemikalien



Zellkultur & Verbrauchsmaterial



Diagnostik & molekulare Diagnostik



Laborgeräte & Service

Weitere Information auf den folgenden Seiten!  
See the following pages for more information!



### Lieferung & Zahlungsart

siehe unsere [Liefer- und Versandbedingungen](#)

### Zuschläge

- Mindermengenzuschlag
- Trockeneiszuschlag
- Gefahrgutzuschlag
- Expressversand

### SZABO-SCANDIC HandelsgmbH

Quellenstraße 110, A-1100 Wien

T. +43(0)1 489 3961-0

F. +43(0)1 489 3961-7

[mail@szabo-scandic.com](mailto:mail@szabo-scandic.com)

[www.szabo-scandic.com](http://www.szabo-scandic.com)

[linkedin.com/company/szaboscandic](https://www.linkedin.com/company/szaboscandic) 

# PRODUCT INFORMATION



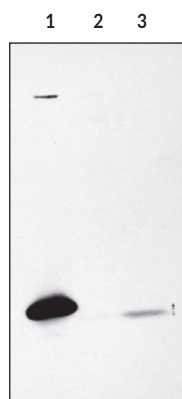
## Caspase-9 Polyclonal Antibody

Item No. 160790

### Overview and Properties

<b>Contents:</b>	This vial contains 500 µl of peptide-affinity purified polyclonal antibody.
<b>Synonyms:</b>	Apaf-3, ICE-LAP6, Mch6
<b>Immunogen:</b>	Synthetic peptide from the C-terminal region of human protein
<b>Species Reactivity:</b>	(+) Human Caspase-9; other species not tested
<b>Uniprot No.:</b>	P55211
<b>Form:</b>	Liquid
<b>Storage:</b>	-20°C (as supplied)
<b>Stability:</b>	≥3 year
<b>Storage Buffer:</b>	PBS, pH 7.2, with 0.02% sodium azide
<b>Host:</b>	Rabbit
<b>Applications:</b>	Western blot (WB); the recommended starting dilution is 1:200. Other applications were not tested, therefore optimal working concentration/dilution should be determined empirically.

### Image



Lane 1: Caspase-9 transfected  
293T cell lysate (20 µg)  
Lane 2: 293T cell lysate (50 µg)  
Lane 3: HeLa cell lysate (50 µg)

**WARNING**  
THIS PRODUCT IS FOR RESEARCH ONLY - NOT FOR HUMAN OR VETERINARY DIAGNOSTIC OR THERAPEUTIC USE.

**SAFETY DATA**  
This material should be considered hazardous until further information becomes available. Do not ingest, inhale, get in eyes, on skin, or on clothing. Wash thoroughly after handling. Before use, the user must review the complete Safety Data Sheet, which has been sent via email to your institution.

**WARRANTY AND LIMITATION OF REMEDY**  
Buyer agrees to purchase the material subject to Cayman's Terms and Conditions. Complete Terms and Conditions including Warranty and Limitation of Liability information can be found on our website.

Copyright Cayman Chemical Company, 10/23/2023

**CAYMAN CHEMICAL**  
1180 EAST ELLSWORTH RD  
ANN ARBOR, MI 48108 · USA  
PHONE: [800] 364-9897  
[734] 971-3335  
FAX: [734] 971-3640  
CUSTSERV@CAYMANCHEM.COM  
WWW.CAYMANCHEM.COM

# PRODUCT INFORMATION



## Description

---

Apoptosis is related to many diseases and is induced by a family of cell death receptors and their ligands. Cell death signals are transduced by death domain containing adapter molecules and members of the caspase family of proteases. A novel member in the caspase family was recently identified and designated ICE-LAP6, Mch6, and Apaf3.<sup>1-3</sup> Caspase-9 and Apaf-1 bind to each other, which leads to caspase-9 activation.<sup>3</sup> Caspase-9 is also activated by granzyme B and CPP32.<sup>1,2</sup> Activated caspase-9 cleaves and activates caspase-3, one of the key proteases responsible for the proteolytic cleavage of many key proteins in apoptosis.<sup>3</sup> Caspase-9 plays a central role in cell death induced by a wide variety of apoptosis inducers including TNF- $\alpha$ , TRAIL, anti-CD-95, FADD, and TRADD.<sup>4</sup> Caspase-9 is expressed in a variety of human tissues.<sup>1,2</sup>

## References

---

1. Srinivasula, S.M., Fernandes-Alnemri, T., Zangrilli, J., *et al.* The Ced-3/interleukin 1 $\beta$  converting enzyme-like homolog Mch6 and the lamin-cleaving enzyme Mch2a are substrates for the apoptotic mediator CPP32. *J. Biol. Chem.* **271(43)**, 27099-27106 (1996).
2. Duan, H., Orth, K., Chinnaiyan, A.M., *et al.* ICE-LAP6, a novel member of the ICE/Ced-3 gene family, is activated by the cytotoxic T cell protease granzyme B. *J. Biol. Chem.* **271(28)**, 16720-16724 (1996).
3. Li, P., Nijhawan, D., Budihardjo, I., *et al.* Cytochrome c and dATP-dependent formation of Apaf-1/caspase-9 complex initiates an apoptotic protease cascade. *Cell* **91(4)**, 479-489 (1997).
4. Pan, G., O'Rourke, K., and Dixit, V.M. Caspase-9, Bcl-XL, and Apaf-1 form a ternary complex. *J. Biol. Chem.* **273(10)**, 5841-5845 (1998).

CAYMAN CHEMICAL  
1180 EAST ELLSWORTH RD  
ANN ARBOR, MI 48108 · USA  
PHONE: [800] 364-9897  
[734] 971-3335  
FAX: [734] 971-3640  
CUSTSERV@CAYMANCHEM.COM  
WWW.CAYMANCHEM.COM