



SZABO SCANDIC

Part of Europa Biosite

Produktinformation



Forschungsprodukte & Biochemikalien



Zellkultur & Verbrauchsmaterial



Diagnostik & molekulare Diagnostik



Laborgeräte & Service

Weitere Information auf den folgenden Seiten!
See the following pages for more information!



Lieferung & Zahlungsart

siehe unsere [Liefer- und Versandbedingungen](#)

Zuschläge

- Mindermengenzuschlag
- Trockeneiszuschlag
- Gefahrgutzuschlag
- Expressversand

SZABO-SCANDIC HandelsgmbH

Quellenstraße 110, A-1100 Wien

T. +43(0)1 489 3961-0

F. +43(0)1 489 3961-7

mail@szabo-scandic.com

www.szabo-scandic.com

[linkedin.com/company/szaboscandic](https://www.linkedin.com/company/szaboscandic) 

PRODUCT INFORMATION



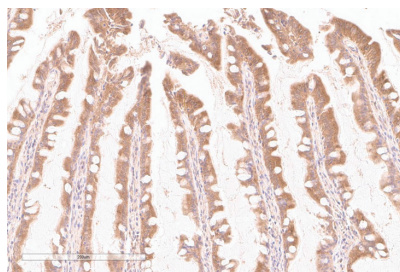
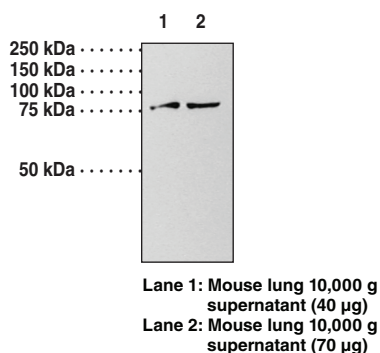
Guanylate Cyclase α subunit (soluble) Polyclonal Antibody

Item No. 160895

Overview and Properties

Contents:	This vial contains 500 μ l of peptide affinity-purified polyclonal antibody.
Synonyms:	GUCY1A1, sGC α_1 subunit
Immunogen:	Peptide from the internal region of human protein
Species Reactivity:	(+) Human, bovine, and mouse; other species not tested
Uniprot No.:	Q02108
Form:	Liquid
Storage:	-20°C (as supplied)
Stability:	\geq 3 years
Storage Buffer:	PBS, pH 7.2, with 50% glycerol and 0.02% sodium azide
Host:	Rabbit
Application:	Western blot (WB) and Immunohistochemistry (IHC); the recommended starting dilution for WB is 1:200 and 1:80 for IHC. Other applications were not tested, therefore optimal working concentration/dilution should be determined empirically.

Image



Immunohistochemistry analysis of formalin-fixed, paraffin-embedded (FFPE) human small intestine tissue after heat-induced antigen retrieval in pH 6.0 citrate buffer. After incubation with Cayman's Guanylate Cyclase α subunit (soluble) Polyclonal Antibody, (Item No. 160895), at a 1:80 dilution, slides were incubated with biotinylated secondary antibody, followed by alkaline phosphatase-streptavidin and chromogen (DAB).

WARNING
THIS PRODUCT IS FOR RESEARCH ONLY - NOT FOR HUMAN OR VETERINARY DIAGNOSTIC OR THERAPEUTIC USE.

SAFETY DATA
This material should be considered hazardous until further information becomes available. Do not ingest, inhale, get in eyes, on skin, or on clothing. Wash thoroughly after handling. Before use, the user must review the complete Safety Data Sheet, which has been sent via email to your institution.

WARRANTY AND LIMITATION OF REMEDY
Buyer agrees to purchase the material subject to Cayman's Terms and Conditions. Complete Terms and Conditions including Warranty and Limitation of Liability information can be found on our website.

Copyright Cayman Chemical Company, 11/17/2023

CAYMAN CHEMICAL
1180 EAST ELLSWORTH RD
ANN ARBOR, MI 48108 · USA
PHONE: [800] 364-9897
[734] 971-3335
FAX: [734] 971-3640
CUSTSERV@CAYMANCHEM.COM
WWW.CAYMANCHEM.COM

PRODUCT INFORMATION



Description

Soluble guanylate cyclase is a heterodimeric enzyme, composed of α and β subunits, that synthesizes cGMP from GTP. The enzyme is activated by the binding of nitric oxide or carbon monoxide to the heme group of the enzyme.¹ Chronic hypoxia upregulates soluble guanylate expression in rat lung.² The α_1 subunit contains 690-717 amino acids and has a molecular mass of 77-82 kDa.³⁻⁵ The cloned β_1 subunit of guanylate cyclase from human, bovine, and rat sources contains 619 amino acids and has a molecular mass of approximately 70,000.^{3,6,7}

References

1. Stone, J.R. and Marletta, M.A. Soluble guanylate cyclase from bovine lung: Activation with nitric oxide and carbon monoxide and spectral characterization of the ferrous and ferric states. *Biochemistry* **33(18)**, 5636-5640 (1994).
2. Li, D., Zhou, N., and Johns, R.A. Soluble guanylate cyclase gene expression and localization in rat lung after exposure to hypoxia. *Am. J. Physiol.* **277(4)**, 841-847 (1999).
3. Giuili, G., Scholl, U., Bulle, F., et al. Molecular cloning of the cDNAs coding for the two subunits of soluble guanylyl cyclase from human brain. *FEBS Lett.* **304(1)**, 83-88 (1992).
4. Nakane, M., Arai, K., Saheki, S., et al. Molecular cloning and expression of cDNAs coding for soluble guanylate cyclase from rat lung. *J. Biol. Chem.* **265(28)**, 16841-16845 (1990).
5. Lee, M.H. and Bell, R.M. Supplementation of the phosphatidyl-L-serine requirement of protein kinase C with nonactivating phospholipids. *Biochemistry* **31(22)**, 5176-5182 (1992).
6. Koesling, D., Herz, J., Gausepohl, H., et al. The primary structure of the 70 kDa subunit of bovine soluble guanylate cyclase. *FEBS Lett.* **239(1)**, 29-34 (1988).
7. Nakane, M., Saheki, S., Kuno, T., et al. Molecular cloning of a cDNA coding for 70 kilodalton subunit of soluble guanylate cyclase from rat lung. *Biochem. Biophys. Res. Commun.* **157(3)**, 1139-1147 (1988).

CAYMAN CHEMICAL
1180 EAST ELLSWORTH RD
ANN ARBOR, MI 48108 · USA
PHONE: [800] 364-9897
[734] 971-3335
FAX: [734] 971-3640
CUSTSERV@CAYMANCHEM.COM
WWW.CAYMANCHEM.COM