



# SZABO SCANDIC

Part of Europa Biosite

## Produktinformation



Forschungsprodukte & Biochemikalien



Zellkultur & Verbrauchsmaterial



Diagnostik & molekulare Diagnostik



Laborgeräte & Service

Weitere Information auf den folgenden Seiten!  
See the following pages for more information!



### Lieferung & Zahlungsart

siehe unsere [Liefer- und Versandbedingungen](#)

### Zuschläge

- Mindermengenzuschlag
- Trockeneiszuschlag
- Gefahrgutzuschlag
- Expressversand

### SZABO-SCANDIC HandelsgmbH

Quellenstraße 110, A-1100 Wien

T. +43(0)1 489 3961-0

F. +43(0)1 489 3961-7

[mail@szabo-scandic.com](mailto:mail@szabo-scandic.com)

[www.szabo-scandic.com](http://www.szabo-scandic.com)

[linkedin.com/company/szaboscandic](https://www.linkedin.com/company/szaboscandic) 



## Goat anti-Mouse IgG (H+L), conjugated to SureLight™ R-PE

Product Number D5-112-100  
Lot# N04003-AAH02  
Amount 0.1 mg  
Clone N/A  
Store at 4°C

### Form/Shipping&Storage

Supplied as a stock solution. Upon receipt, store at 4°C in the dark. Do not freeze.

### Handling

Prior to use, dilute to the appropriate concentration in protein-containing buffered solution pH 7-8 (e.g. PBS + 0.5% BSA). Avoid exposure to heat and light.

### Buffer

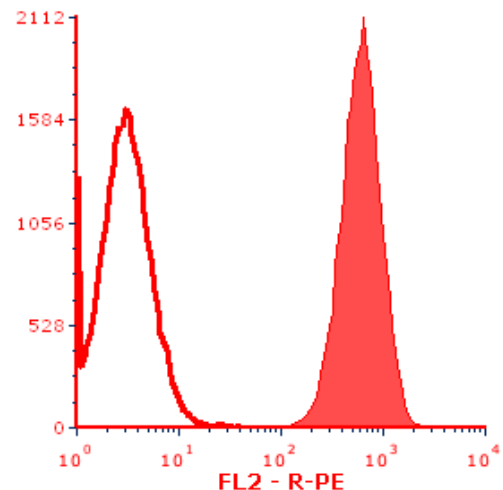
The product is in 100 mM sodium phosphate (pH 7.4), 100 mM sucrose, 150 mM sodium chloride, 0.1% BSA as a stabilizer, and 2 mM sodium azide as a preservative. The concentration is 0.1 mg/mL total protein.

### Stability

The material is stable for up to one year if stored at 2-8°C in the dark. If further dilution of the conjugate is required, use diluted material within one week.

### Note

For research use only, not for diagnostic or therapeutic use.



### Flow cytometry analysis of CD45 expression on Raji (CCL-86, ATCC) human B cell lymphoma cell line

The cells were stained with 1 µg/ml of either mouse anti human CD45 antibodies - shaded histogram; or with isotype matched control - open histogram. Both samples were washed and stained with 0.5 µg/ml of goat anti-Mouse IgG (H+L) SureLight™ R-PE conjugate. The stained cells were analyzed on BD FACSCalibur instrument.

4985 Winchester Blvd. Frederick, MD 21703  
301.732.5415

[www.columbiabiosciences.com](http://www.columbiabiosciences.com)

For technical inquiries: [info@columbiabiosciences.com](mailto:info@columbiabiosciences.com)

For sales inquiries: [sales@columbiabiosciences.com](mailto:sales@columbiabiosciences.com)