



SZABO SCANDIC

Part of Europa Biosite

Produktinformation



Forschungsprodukte & Biochemikalien



Zellkultur & Verbrauchsmaterial



Diagnostik & molekulare Diagnostik



Laborgeräte & Service

Weitere Information auf den folgenden Seiten!
See the following pages for more information!



Lieferung & Zahlungsart

siehe unsere [Liefer- und Versandbedingungen](#)

Zuschläge

- Mindermengenzuschlag
- Trockeneiszuschlag
- Gefahrgutzuschlag
- Expressversand

SZABO-SCANDIC HandelsgmbH

Quellenstraße 110, A-1100 Wien

T. +43(0)1 489 3961-0

F. +43(0)1 489 3961-7

mail@szabo-scandic.com

www.szabo-scandic.com

[linkedin.com/company/szaboscandic](https://www.linkedin.com/company/szaboscandic) 

PRODUCT INFORMATION



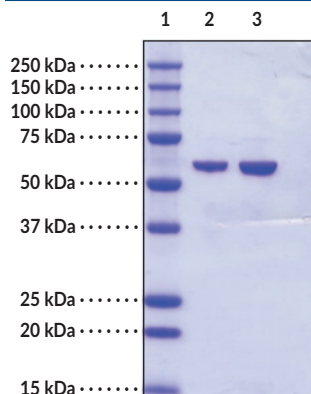
Glucose-6-phosphate Isomerase (human, recombinant)

Item No. 18279

Overview and Properties

Synonyms:	Autocrine Motility Factor, GPI, G6P Isomerase, Neuroleukin, Phosphoglucose Isomerase, Phosphohexose Isomerase, Sperm antigen 36 (SA-36)
Source:	Recombinant C-terminal His-tagged protein expressed in <i>E. coli</i>
Uniprot No.:	P06744
Molecular Weight:	66.0 kDa
Storage:	-80°C (as supplied); avoid freeze/thaw cycles by aliquoting protein
Stability:	≥2 years
Purity:	≥95% estimated by SDS-PAGE
Supplied in:	25 mM Tris-HCl, pH 7.0, 100 mM sodium chloride, and 10% glycerol
Protein Concentration:	<i>batch specific</i> mg/ml
Activity:	<i>batch specific</i> U/ml
Specific Activity:	<i>batch specific</i> U/mg
Unit Definition:	One unit is defined as the amount of enzyme required to reduce 1 μmol of NADP ⁺ to NADPH per minute at 25°C in 50 mM Triethanolamine, pH 7.6, containing 1 mM MgCl ₂

Image



Lane 1: MW Markers

Lane 2: GPI (human recombinant) (1 μg)

Lane 3: GPI (human recombinant) (2 μg)

Representative gel image shown; actual purity may vary between each batch.

WARNING
THIS PRODUCT IS FOR RESEARCH ONLY - NOT FOR HUMAN OR VETERINARY DIAGNOSTIC OR THERAPEUTIC USE.

SAFETY DATA
This material should be considered hazardous until further information becomes available. Do not ingest, inhale, get in eyes, on skin, or on clothing. Wash thoroughly after handling. Before use, the user must review the complete Safety Data Sheet, which has been sent via email to your institution.

WARRANTY AND LIMITATION OF REMEDY
Buyer agrees to purchase the material subject to Cayman's Terms and Conditions. Complete Terms and Conditions including Warranty and Limitation of Liability information can be found on our website.

Copyright Cayman Chemical Company, 09/01/2021

CAYMAN CHEMICAL
1180 EAST ELLSWORTH RD
ANN ARBOR, MI 48108 · USA
PHONE: [800] 364-9897
[734] 971-3335
FAX: [734] 971-3640
CUSTSERV@CAYMANCHEM.COM
WWW.CAYMANCHEM.COM

PRODUCT INFORMATION



Description

Glucose-6-phosphate isomerase (GPI) is the second enzyme in glycolytic pathway. GPI catalyzes the reversible isomerization of D-glucose-6-phosphate and D-fructose-6-phosphate. GPI also functions as a tumor-secreted cytokine and an angiogenic factor to stimulate endothelial cell motility. It has been identified as a neurotrophic factor and also plays a role in patients with rheumatoid arthritis.

CAYMAN CHEMICAL
1180 EAST ELLSWORTH RD
ANN ARBOR, MI 48108 · USA
PHONE: [800] 364-9897
[734] 971-3335
FAX: [734] 971-3640
CUSTSERV@CAYMANCHEM.COM
WWW.CAYMANCHEM.COM