



SZABO SCANDIC

Part of Europa Biosite

Produktinformation



Forschungsprodukte & Biochemikalien



Zellkultur & Verbrauchsmaterial



Diagnostik & molekulare Diagnostik



Laborgeräte & Service

Weitere Information auf den folgenden Seiten!
See the following pages for more information!



Lieferung & Zahlungsart

siehe unsere [Liefer- und Versandbedingungen](#)

Zuschläge

- Mindermengenzuschlag
- Trockeneiszuschlag
- Gefahrgutzuschlag
- Expressversand

SZABO-SCANDIC HandelsgmbH

Quellenstraße 110, A-1100 Wien

T. +43(0)1 489 3961-0

F. +43(0)1 489 3961-7

mail@szabo-scandic.com

www.szabo-scandic.com

[linkedin.com/company/szaboscandic](https://www.linkedin.com/company/szaboscandic) 

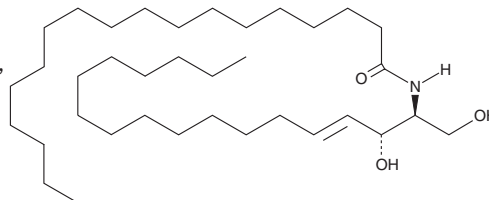
PRODUCT INFORMATION



C18 Ceramide (d18:1/18:0)

Item No. 19556

CAS Registry No.: 2304-81-6
Formal Name: N-[(1S,2R,3E)-2-hydroxy-1-(hydroxymethyl)-3-heptadecen-1-yl]-octadecanamide
Synonyms: Cer(d18:1/18:0), Ceramide (d18:1/18:0), N-Stearoyl-D-Sphingosine
MF: C₃₆H₇₁NO₃
FW: 566.0
Purity: ≥95%
Supplied as: A crystalline solid
Storage: -20°C
Stability: ≥2 years



Information represents the product specifications. Batch specific analytical results are provided on each certificate of analysis.

Laboratory Procedures

C18 Ceramide (d18:1/18:0) is supplied as a crystalline solid. A stock solution may be made by dissolving the C18 ceramide (d18:1/18:0) in the solvent of choice. C18 Ceramide (d18:1/18:0) is soluble in the organic solvent dimethyl formamide, which should be purged with an inert gas, at a concentration of approximately 0.15 mg/ml.

Description

C18 Ceramide is an endogenous bioactive sphingolipid. It is the primary short-chain ceramide found in brain tissue whose synthesis is regulated by longevity-assurance homologue 1 (Lass1) in mice.¹ Increased expression of C18 ceramide reduces cell growth in UM-SCC-22A squamous cell carcinoma cells.² It is selectively downregulated in 32 human head and neck squamous cell carcinoma tumor tissues as compared to non-squamous tumor tissues. C18 Ceramide concentration is significantly higher in muscle tissue of type 2 diabetic patients compared with non-diabetic patients and is positively correlated to body mass index and inversely related to insulin sensitivity.³

References

1. Mizutani, Y., Kihara, A., and Igarashi, Y. Mammalian Lass6 and its related family members regulate synthesis of specific ceramides. *Biochem J.* **390**(Pt. 1), 263-271 (2005).
2. Koybasi, S., Senkal, C.E., Sundararaj, K., et al. Defects in cell growth regulation by C18:0-ceramide and longevity assurance gene 1 in human head and neck squamous cell carcinomas. *J. Biol. Chem.* **279**(43), 44311-44319 (2004).
3. Bergman, B.C., Brozinick, J.T., Strauss, A., et al. Muscle sphingolipids during rest and exercise: A C18:0 signature for insulin resistance in humans. *Diabetologia* **59**(3), 785-791 (2016).

WARNING

THIS PRODUCT IS FOR RESEARCH ONLY - NOT FOR HUMAN OR VETERINARY DIAGNOSTIC OR THERAPEUTIC USE.

SAFETY DATA

This material should be considered hazardous until further information becomes available. Do not ingest, inhale, get in eyes, on skin, or on clothing. Wash thoroughly after handling. Before use, the user must review the complete Safety Data Sheet, which has been sent via email to your institution.

WARRANTY AND LIMITATION OF REMEDY

Buyer agrees to purchase the material subject to Cayman's Terms and Conditions. Complete Terms and Conditions including Warranty and Limitation of Liability information can be found on our website.

Copyright Cayman Chemical Company, 01/24/2018

CAYMAN CHEMICAL

1180 EAST ELLSWORTH RD
ANN ARBOR, MI 48108 · USA

PHONE: [800] 364-9897
[734] 971-3335

FAX: [734] 971-3640

CUSTSERV@CAYMANCHEM.COM
WWW.CAYMANCHEM.COM