



SZABO SCANDIC

Part of Europa Biosite

Produktinformation



Forschungsprodukte & Biochemikalien



Zellkultur & Verbrauchsmaterial



Diagnostik & molekulare Diagnostik



Laborgeräte & Service

Weitere Information auf den folgenden Seiten!
See the following pages for more information!



Lieferung & Zahlungsart

siehe unsere [Liefer- und Versandbedingungen](#)

Zuschläge

- Mindermengenzuschlag
- Trockeneiszuschlag
- Gefahrgutzuschlag
- Expressversand

SZABO-SCANDIC HandelsgmbH

Quellenstraße 110, A-1100 Wien

T. +43(0)1 489 3961-0

F. +43(0)1 489 3961-7

mail@szabo-scandic.com

www.szabo-scandic.com

[linkedin.com/company/szaboscandic](https://www.linkedin.com/company/szaboscandic) 

PRODUCT INFORMATION



Linoleic Acid Oxylipins LC-MS Mixture

Item No. 20794

Supplied as: A solution in ethanol (10 µg/ml each compound)

Storage: -20°C

Stability: ≥2 years

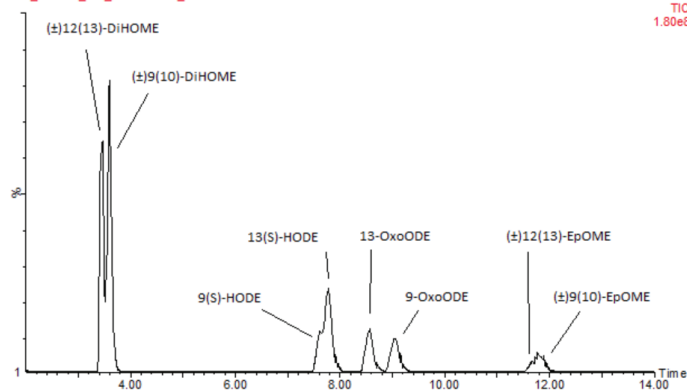
Information represents the product specifications. Batch specific analytical results are provided on each certificate of analysis.

Description and Contents

The linoleic acid oxylipins LC-MS Mixture contains oxylipin metabolites derived from linoleic acid (Item No. 90150). The mixture is supplied in an amber ampule in which the headspace has been purged with argon to prevent lipid oxidation. This product has been designed for direct use in LC-MS applications. The solution may be used as a system suitability standard or tuning standard. After opening, we recommend that the mixture be transferred immediately to a 1 ml glass screw cap vial, to prevent solvent evaporation, and stored at -20°C. The mixture should be discarded after multiple freeze/thaw cycles.

This mixture contains 9(S)-HODE (Item No. 38410), 9-OxoODE (Item No. 38420), 13(S)-HODE (Item No. 38610), 13-OxoODE (Item No. 38620), (±)9(10)-EpOME (Item No. 52400), (±)9(10)DiHOME (Item No. 53400), (±)12(13)-EpOME (Item No. 52450), and (±)12(13)-DiHOME (Item No. 10009832).

20794 PR15745 2µg/mL 20794 PR15745
20794_Product_QC_23MAR2017_015



Item Number: 20794		Linoleic Acid Oxylipins LC-MS Mixture		
Item Number	Item Name	Formula Weight	MS/MS Transition	RT (min)
10009832	(±)12(13)-DiHOME	314.5	313>183	3.46
53400	(±)9(10)-DiHOME	314.5	313>201	3.59
38410	9(S)-HODE	296.5	295>171	7.61
38610	13(S)-HODE	296.5	295>195	7.78
38620	13-OxoODE	294.4	293>113	8.57
38420	9-OxoODE	294.4	293>185	9.06
52450	(±)12(13)-EpOME	296.5	295>195	11.76
52400	(±)9(10)-EpOME	296.5	295>171	11.84

LC-MS Conditions:

Mobile Phase A: Water + 0.1% Formic Acid	
Mobile Phase B: Acetonitrile + 0.1% Formic Acid	
Column: Waters BEH C8, 2.1 x 100 mm, 1.7 µm, 30°C	Flow Rate: 400 µl/min
LC Gradient: Isocratic 45%B to 52%B over 24 minutes	
Negative Electrospray Ionization	Full MS/Survey Scan

WARNING

THIS PRODUCT IS FOR RESEARCH ONLY - NOT FOR HUMAN OR VETERINARY DIAGNOSTIC OR THERAPEUTIC USE.

SAFETY DATA

This material should be considered hazardous until further information becomes available. Do not ingest, inhale, get in eyes, on skin, or on clothing. Wash thoroughly after handling. Before use, the user must review the complete Safety Data Sheet, which has been sent via email to your institution.

WARRANTY AND LIMITATION OF REMEDY

Buyer agrees to purchase the material subject to Cayman's Terms and Conditions. Complete Terms and Conditions including Warranty and Limitation of Liability information can be found on our website.

Copyright Cayman Chemical Company, 04/17/2018

CAYMAN CHEMICAL

1180 EAST ELLSWORTH RD
ANN ARBOR, MI 48108 · USA

PHONE: [800] 364-9897

[734] 971-3335

FAX: [734] 971-3640

CUSTSERV@CAYMANCHEM.COM

WWW.CAYMANCHEM.COM