



SZABO SCANDIC

Part of Europa Biosite

Produktinformation



Forschungsprodukte & Biochemikalien



Zellkultur & Verbrauchsmaterial



Diagnostik & molekulare Diagnostik



Laborgeräte & Service

Weitere Information auf den folgenden Seiten!
See the following pages for more information!



Lieferung & Zahlungsart

siehe unsere [Liefer- und Versandbedingungen](#)

Zuschläge

- Mindermengenzuschlag
- Trockeneiszuschlag
- Gefahrgutzuschlag
- Expressversand

SZABO-SCANDIC HandelsgmbH

Quellenstraße 110, A-1100 Wien

T. +43(0)1 489 3961-0

F. +43(0)1 489 3961-7

mail@szabo-scandic.com

www.szabo-scandic.com

[linkedin.com/company/szaboscandic](https://www.linkedin.com/company/szaboscandic) 

PRODUCT INFORMATION



15(S)-HETE methyl ester

Item No. 21327

CAS Registry No.: 70946-44-0
Formal Name: 15S-hydroxy-5Z,8Z,11Z,13Z-eicosatetraenoic acid, methyl ester

MF: C₂₁H₃₄O₃

FW: 334.5

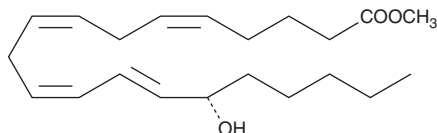
Purity: ≥98%

UV/Vis.: λ_{max}: 236 nm

Supplied as: A solution in methanol

Storage: -20°C

Stability: As supplied, 1 year from the QC date provided on the Certificate of Analysis, when stored properly



Laboratory Procedures

15(S)-HETE methyl ester is supplied as a solution in methanol. To change the solvent, simply evaporate the methanol under a gentle stream of nitrogen and immediately add the solvent of choice. Solvents such as ethanol, DMSO, and dimethyl formamide (DMF) purged with an inert gas can be used. 15(S)-HETE methyl ester is miscible with ethanol, DMSO, and DMF.

15(S)-HETE methyl ester is sparingly soluble in aqueous buffers. For maximum solubility in aqueous buffers, 15(S)-HETE methyl ester should first be dissolved in ethanol and then diluted with the aqueous buffer of choice. 15(S)-HETE methyl ester has a solubility of approximately 0.2 mg/ml in a 1:3 solution of ethanol:PBS (pH 7.2) using this method. We do not recommend storing the aqueous solution for more than one day.

Description

15(S)-HETE methyl ester is a synthetic derivative of 15(S)-HETE (Item No. 34720), a major arachidonic acid metabolite from the 15-lipoxygenase pathway. Methyl esters of lipids are commonly used in formulations of nutritional supplements.

WARNING

THIS PRODUCT IS FOR RESEARCH ONLY - NOT FOR HUMAN OR VETERINARY DIAGNOSTIC OR THERAPEUTIC USE.

SAFETY DATA

This material should be considered hazardous until further information becomes available. Do not ingest, inhale, get in eyes, on skin, or on clothing. Wash thoroughly after handling. Before use, the user must review the [complete](#) Safety Data Sheet, which has been sent via email to your institution.

WARRANTY AND LIMITATION OF REMEDY

Buyer agrees to purchase the material subject to Cayman's Terms and Conditions. Complete Terms and Conditions including Warranty and Limitation of Liability information can be found on our website.

Copyright Cayman Chemical Company, 02/13/2017

CAYMAN CHEMICAL

1180 EAST ELLSWORTH RD
ANN ARBOR, MI 48108 · USA

PHONE: [800] 364-9897
[734] 971-3335

FAX: [734] 971-3640

CUSTSERV@CAYMANCHEM.COM
WWW.CAYMANCHEM.COM