



SZABO SCANDIC

Part of Europa Biosite

Produktinformation



Forschungsprodukte & Biochemikalien



Zellkultur & Verbrauchsmaterial



Diagnostik & molekulare Diagnostik



Laborgeräte & Service

Weitere Information auf den folgenden Seiten!
See the following pages for more information!



Lieferung & Zahlungsart

siehe unsere [Liefer- und Versandbedingungen](#)

Zuschläge

- Mindermengenzuschlag
- Trockeneiszuschlag
- Gefahrgutzuschlag
- Expressversand

SZABO-SCANDIC HandelsgmbH

Quellenstraße 110, A-1100 Wien

T. +43(0)1 489 3961-0

F. +43(0)1 489 3961-7

mail@szabo-scandic.com

www.szabo-scandic.com

[linkedin.com/company/szaboscandic](https://www.linkedin.com/company/szaboscandic) 

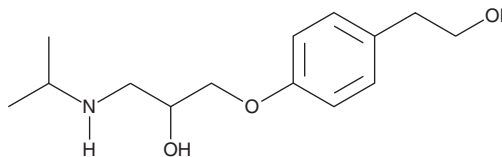
PRODUCT INFORMATION



O-Desmethyl Metoprolol

Item No. 21787

CAS Registry No.: 62572-94-5
Formal Name: 4-[2-hydroxy-3-[(1-methylethyl)amino]propoxy]-benzeneethanol
Synonyms: O-DMM, SL 80-0088
MF: C₁₄H₂₃NO₃
FW: 253.3
Purity: ≥95%
UV/Vis.: λ_{max}: 224, 277 nm
Supplied as: A crystalline solid
Storage: -20°C
Stability: ≥2 years



Information represents the product specifications. Batch specific analytical results are provided on each certificate of analysis.

Laboratory Procedures

O-Desmethyl metoprolol is supplied as a crystalline solid. A stock solution may be made by dissolving the O-desmethyl metoprolol in the solvent of choice, which should be purged with an inert gas. O-Desmethyl metoprolol is slightly soluble in dichloromethane, chloroform, and methanol.

Description

O-Desmethyl metoprolol is the major active metabolite of the β_1 -adrenergic receptor blocker metoprolol (Item No. 15429).¹ It is formed by metabolism of metoprolol by the cytochrome P450 (CYP) isoform CYP2D6 *in vivo*.²

References

1. Liang, X., Jiang, H., and Chen, X. Human DBS sampling with LC-MS/MS for enantioselective determination of metoprolol and its metabolite O-desmethyl metoprolol. *Bioanalysis* **2(8)**, 1437-1448 (2010).
2. Borkar, R.M., Bhandi, M.M., Dubey, A.P., *et al.* An evaluation of the CYP2D6 and CYP3A4 inhibition potential of metoprolol metabolites and their contribution to drug-drug and drug-herb interaction by LC-ESI/MS/MS. *Biomed. Chromatogr.* **30(10)**, 1556-1572 (2016).

WARNING

THIS PRODUCT IS FOR RESEARCH ONLY - NOT FOR HUMAN OR VETERINARY DIAGNOSTIC OR THERAPEUTIC USE.

SAFETY DATA

This material should be considered hazardous until further information becomes available. Do not ingest, inhale, get in eyes, on skin, or on clothing. Wash thoroughly after handling. Before use, the user must review the [complete](#) Safety Data Sheet, which has been sent via email to your institution.

WARRANTY AND LIMITATION OF REMEDY

Buyer agrees to purchase the material subject to Cayman's Terms and Conditions. Complete Terms and Conditions including Warranty and Limitation of Liability information can be found on our website.

Copyright Cayman Chemical Company, 08/18/2021

CAYMAN CHEMICAL

1180 EAST ELLSWORTH RD
ANN ARBOR, MI 48108 · USA

PHONE: [800] 364-9897
[734] 971-3335

FAX: [734] 971-3640

CUSTSERV@CAYMANCHEM.COM
WWW.CAYMANCHEM.COM