



# SZABO SCANDIC

Part of Europa Biosite

## Produktinformation



Forschungsprodukte & Biochemikalien



Zellkultur & Verbrauchsmaterial



Diagnostik & molekulare Diagnostik



Laborgeräte & Service

Weitere Information auf den folgenden Seiten!  
See the following pages for more information!



### Lieferung & Zahlungsart

siehe unsere [Liefer- und Versandbedingungen](#)

### Zuschläge

- Mindermengenzuschlag
- Trockeneiszuschlag
- Gefahrgutzuschlag
- Expressversand

### SZABO-SCANDIC HandelsgmbH

Quellenstraße 110, A-1100 Wien

T. +43(0)1 489 3961-0

F. +43(0)1 489 3961-7

[mail@szabo-scandic.com](mailto:mail@szabo-scandic.com)

[www.szabo-scandic.com](http://www.szabo-scandic.com)

[linkedin.com/company/szaboscandic](https://www.linkedin.com/company/szaboscandic) 

# PRODUCT INFORMATION



## Dihomo- $\gamma$ -Linoleic Acid Metabolite LC-MS Mixture

Item No. 22281

**Supplied as:** A solution in ethanol (1  $\mu$ g/ml of each compound)

**Storage:** -20°C

**Stability:**  $\geq$ 5 years

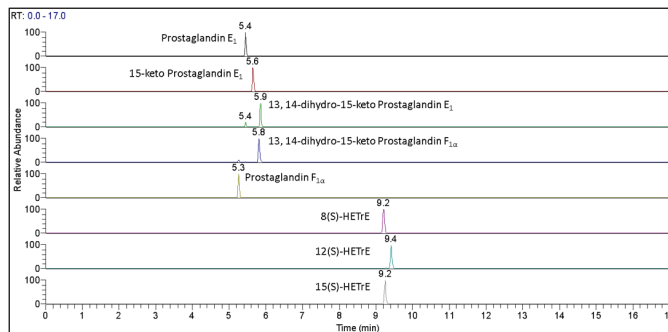
Information represents the product specifications. Batch specific analytical results are provided on each certificate of analysis.

### Description

The dihomogamma-linoleic acid metabolite LC-MS mixture contains cyclooxygenase and lipoxygenase pathway-derived metabolites of dihomogamma-linoleic acid (DGLA). The mixture is supplied in an amber ampule in which the headspace has been purged with argon to prevent lipid oxidation. This product has been designed for direct use in LC-MS applications. The solution may be used as a system suitability standard or tuning standard. After opening, we recommend that the mixture be transferred immediately to a 1 ml glass screw cap vial, to prevent solvent evaporation, and stored at -20°C. The mixture should be discarded after multiple freeze/thaw cycles.

This mixture contains prostaglandin E<sub>1</sub> (Item No. 13010), 15-keto prostaglandin E<sub>1</sub> (Item No. 13680), 13,14-dihydro-15-keto prostaglandin E<sub>1</sub> (Item No. 13650), 13,14-dihydro-15-keto prostaglandin F<sub>1 $\alpha$</sub>  (Item No. 15670), prostaglandin F<sub>1 $\alpha$</sub>  (Item No. 15010), 8(S)-HETrE (Item No. 36360), 12(S)-HETrE (Item No. 18483), and 15(S)-HETrE (Item No. 36720).

### Contents



Item Number: 22281		Dihomo- $\gamma$ -Linoleic Acid Metabolite LC-MS Mixture			
Item Number	Item Name	Formula:	Mass (Da):	Transitions (m/z):	RT (min)
13010	Prostaglandin E <sub>1</sub>	C <sub>20</sub> H <sub>34</sub> O <sub>5</sub>	354.5	353.23>273.22	5.4
13680	15-keto Prostaglandin E <sub>1</sub>	C <sub>20</sub> H <sub>32</sub> O <sub>5</sub>	352.5	351.22>237.11	5.6
13650	13,14-dihydro-15-keto Prostaglandin E <sub>1</sub>	C <sub>20</sub> H <sub>34</sub> O <sub>5</sub>	354.5	353.23>221.12	5.9
15670	13,14-dihydro-15-keto Prostaglandin F <sub>1<math>\alpha</math></sub>	C <sub>20</sub> H <sub>36</sub> O <sub>5</sub>	356.5	355.25>113.10	5.8
15010	Prostaglandin F <sub>1<math>\alpha</math></sub>	C <sub>20</sub> H <sub>36</sub> O <sub>5</sub>	356.5	355.25>293.21	5.3
36360	8(S)-HETrE	C <sub>20</sub> H <sub>34</sub> O <sub>3</sub>	322.5	321.24>157.09	9.2
18483	12(S)-HETrE	C <sub>20</sub> H <sub>34</sub> O <sub>3</sub>	322.5	321.24>181.12	9.4
36720	15(S)-HETrE	C <sub>20</sub> H <sub>34</sub> O <sub>3</sub>	322.5	321.24>221.15	9.2

LC-MS Conditions: Ultimate 3000UHPLC&Q Exactive Orbitrap (Thermo Scientific).

Mobile Phase A: Water + 0.1% Formic Acid

Mobile Phase B: Acetonitrile + 0.1% Formic Acid

Column: Waters BEH C8, 2.1 x 100 mm, 1.7  $\mu$ m

Flow Rate: 400  $\mu$ l/min

Negative Electrospray Ionization

Parallel Reaction Monitoring (PRM)

#### WARNING

THIS PRODUCT IS FOR RESEARCH ONLY - NOT FOR HUMAN OR VETERINARY DIAGNOSTIC OR THERAPEUTIC USE.

#### SAFETY DATA

This material should be considered hazardous until further information becomes available. Do not ingest, inhale, get in eyes, on skin, or on clothing. Wash thoroughly after handling. Before use, the user must review the complete Safety Data Sheet, which has been sent via email to your institution.

#### WARRANTY AND LIMITATION OF REMEDY

Buyer agrees to purchase the material subject to Cayman's Terms and Conditions. Complete Terms and Conditions including Warranty and Limitation of Liability information can be found on our website.

Copyright Cayman Chemical Company, 11/15/2021

#### CAYMAN CHEMICAL

1180 EAST ELLSWORTH RD  
ANN ARBOR, MI 48108 · USA

PHONE: [800] 364-9897

[734] 971-3335

FAX: [734] 971-3640

CUSTSERV@CAYMANCHEM.COM

WWW.CAYMANCHEM.COM