



SZABO SCANDIC

Part of Europa Biosite

Produktinformation



Forschungsprodukte & Biochemikalien



Zellkultur & Verbrauchsmaterial



Diagnostik & molekulare Diagnostik



Laborgeräte & Service

Weitere Information auf den folgenden Seiten!
See the following pages for more information!



Lieferung & Zahlungsart

siehe unsere [Liefer- und Versandbedingungen](#)

Zuschläge

- Mindermengenzuschlag
- Trockeneiszuschlag
- Gefahrgutzuschlag
- Expressversand

SZABO-SCANDIC HandelsgmbH

Quellenstraße 110, A-1100 Wien

T. +43(0)1 489 3961-0

F. +43(0)1 489 3961-7

mail@szabo-scandic.com

www.szabo-scandic.com

[linkedin.com/company/szaboscandic](https://www.linkedin.com/company/szaboscandic) 

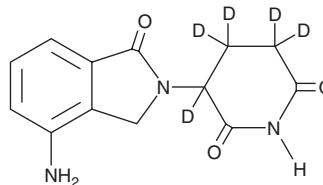
PRODUCT INFORMATION



Lenalidomide-d₅

Item No. 22370

CAS Registry No.: 1227162-34-6
Formal Name: 5-(4-amino-1,3-dihydro-1-oxo-2H-isoindol-2-yl)-2,6-piperidinedione-3,3,4,4,5-d₅
MF: C₁₃H₈D₅N₃O₃
FW: 264.3
Chemical Purity: ≥98% (Lenalidomide)
Deuterium Incorporation: ≥99% deuterated forms (d₁-d₅); ≤1% d₀
Supplied as: A solid
Storage: -20°C
Stability: ≥2 years



Information represents the product specifications. Batch specific analytical results are provided on each certificate of analysis.

Laboratory Procedures

Lenalidomide-d₅ is intended for use as an internal standard for the quantification of lenalidomide (Item No. 14643) by GC- or LC-MS. The accuracy of the sample weight in this vial is between 5% over and 2% under the amount shown on the vial. If better precision is required, the deuterated standard should be quantitated against a more precisely weighed unlabeled standard by constructing a standard curve of peak intensity ratios (deuterated versus unlabeled).

Lenalidomide-d₅ is supplied as a solid. A stock solution may be made by dissolving the lenalidomide-d₅ in the solvent of choice, which should be purged with an inert gas. Lenalidomide-d₅ is soluble in methanol and DMSO.

Description

Lenalidomide is related to thalidomide (Item No. 14610) and, at 10 μM, alters gene expression and cell viability in a range of cancer cell lines.¹ It also induces proliferation and enhances the functional capacity of T lymphocytes, amplifying co-stimulatory signaling pathways.² Lenalidomide is effective in hematologic cancers, including lymphomas and myelomas.^{3,4}

References

1. Kim, K., An, S., Cha, H.J., *et al.* Lenalidomide induces apoptosis and alters gene expression in non-small cell lung cancer cells. *Oncol. Lett.* **5**(2), 588-596 (2013).
2. McDaniel, J.M., Pinilla-Ibarz, J., and Epling-Burnette, P.K. Molecular action of lenalidomide in lymphocytes and hematologic malignancies. *Adv. Hematol.* 513702 (2012).
3. Latif, T., Chauhan, N., Khan, R., *et al.* Thalidomide and its analogues in the treatment of multiple myeloma. *Exp. Hematol. Oncol.* **1**(1), 27 (2012).
4. Merli, M., Ferrario, A., Basilico, C., *et al.* Novel agents in indolent lymphomas. *Ther. Adv. Hematol.* **4**(2), 133-148 (2013).

WARNING

THIS PRODUCT IS FOR RESEARCH ONLY - NOT FOR HUMAN OR VETERINARY DIAGNOSTIC OR THERAPEUTIC USE.

SAFETY DATA

This material should be considered hazardous until further information becomes available. Do not ingest, inhale, get in eyes, on skin, or on clothing. Wash thoroughly after handling. Before use, the user must review the complete Safety Data Sheet, which has been sent via email to your institution.

WARRANTY AND LIMITATION OF REMEDY

Buyer agrees to purchase the material subject to Cayman's Terms and Conditions. Complete Terms and Conditions including Warranty and Limitation of Liability information can be found on our website.

Copyright Cayman Chemical Company, 04/242019

CAYMAN CHEMICAL

1180 EAST ELLSWORTH RD
ANN ARBOR, MI 48108 · USA

PHONE: [800] 364-9897
[734] 971-3335

FAX: [734] 971-3640

CUSTSERV@CAYMANCHEM.COM
WWW.CAYMANCHEM.COM