



SZABO SCANDIC

Part of Europa Biosite

Produktinformation



Forschungsprodukte & Biochemikalien



Zellkultur & Verbrauchsmaterial



Diagnostik & molekulare Diagnostik



Laborgeräte & Service

Weitere Information auf den folgenden Seiten!
See the following pages for more information!



Lieferung & Zahlungsart

siehe unsere [Liefer- und Versandbedingungen](#)

Zuschläge

- Mindermengenzuschlag
- Trockeneiszuschlag
- Gefahrgutzuschlag
- Expressversand

SZABO-SCANDIC HandelsgmbH

Quellenstraße 110, A-1100 Wien

T. +43(0)1 489 3961-0

F. +43(0)1 489 3961-7

mail@szabo-scandic.com

www.szabo-scandic.com

[linkedin.com/company/szaboscandic](https://www.linkedin.com/company/szaboscandic) 

PRODUCT INFORMATION



C17 Ceramide (d18:1/17:0)

Item No. 22532

CAS Registry No.: 67492-16-4
Formal Name: N-[(1S,2R,3E)-2-hydroxy-1-(hydroxymethyl)-3-heptadecen-1-yl]-heptadecanamide

Synonyms: Cer(d18:1/17:0), Ceramide (d18:1/17:0), N-heptadecanoyl-D-erythro-Sphingosine

MF: C₃₅H₆₉NO₃

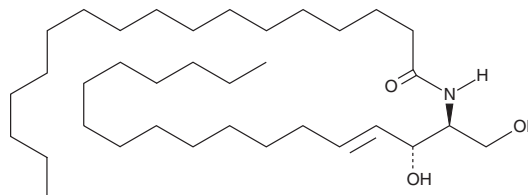
FW: 551.9

Purity: ≥98%

Supplied as: A solid

Storage: -20°C

Stability: ≥2 years



Information represents the product specifications. Batch specific analytical results are provided on each certificate of analysis.

Laboratory Procedures

C17 Ceramide (d18:1/17:0) is supplied as a solid. A stock solution may be made by dissolving the C17 ceramide (d18:1/17:0) in the solvent of choice. C17 Ceramide (d18:1/17:0) is soluble in organic solvents such as ethanol (heated), methanol (heated), and chloroform, which should be purged with an inert gas.

Description

C17 Ceramide is a synthetic ceramide that contains a non-natural C17:0 fatty acid acylated to sphingosine.¹ It has been used as a marker of arylsulfatase A and sphingolipid activator B activity in patients undergoing enzyme replacement therapy for the genetic disease metachromatic leukodystrophy.

Reference

1. Cui, Y., Colsch, B., Afonso, C., *et al.* Synthetic sulfogalactosylceramide (sulfatide) and its use for the mass spectrometric quantitative urinary determination in metachromatic leukodystrophies. *Glycoconj. J.* **25(2)**, 147-155 (2008).

WARNING

THIS PRODUCT IS FOR RESEARCH ONLY - NOT FOR HUMAN OR VETERINARY DIAGNOSTIC OR THERAPEUTIC USE.

SAFETY DATA

This material should be considered hazardous until further information becomes available. Do not ingest, inhale, get in eyes, on skin, or on clothing. Wash thoroughly after handling. Before use, the user must review the [complete](#) Safety Data Sheet, which has been sent via email to your institution.

WARRANTY AND LIMITATION OF REMEDY

Buyer agrees to purchase the material subject to Cayman's Terms and Conditions. Complete Terms and Conditions including Warranty and Limitation of Liability information can be found on our website.

Copyright Cayman Chemical Company, 05/25/2018

CAYMAN CHEMICAL

1180 EAST ELLSWORTH RD
ANN ARBOR, MI 48108 · USA

PHONE: [800] 364-9897

[734] 971-3335

FAX: [734] 971-3640

CUSTSERV@CAYMANCHEM.COM
WWW.CAYMANCHEM.COM