



# SZABO SCANDIC

Part of Europa Biosite

## Produktinformation



Forschungsprodukte & Biochemikalien



Zellkultur & Verbrauchsmaterial



Diagnostik & molekulare Diagnostik



Laborgeräte & Service

Weitere Information auf den folgenden Seiten!  
See the following pages for more information!



### Lieferung & Zahlungsart

siehe unsere [Liefer- und Versandbedingungen](#)

### Zuschläge

- Mindermengenzuschlag
- Trockeneiszuschlag
- Gefahrgutzuschlag
- Expressversand

### SZABO-SCANDIC HandelsgmbH

Quellenstraße 110, A-1100 Wien

T. +43(0)1 489 3961-0

F. +43(0)1 489 3961-7

[mail@szabo-scandic.com](mailto:mail@szabo-scandic.com)

[www.szabo-scandic.com](http://www.szabo-scandic.com)

[linkedin.com/company/szaboscandic](https://www.linkedin.com/company/szaboscandic) 

# PRODUCT INFORMATION



## C6 NBD Glucosylceramide (d18:1/6:0)

Item No. 23209

**CAS Registry No.:** 94885-03-7  
**Formal Name:** N-[(1S,2R,3E)-1-[(β-D-glucopyranosyloxy)methyl]-2-hydroxy-3-heptadecen-1-yl]-6-[(7-nitro-2,1,3-benzoxadiazol-4-yl)amino]-hexanamide  
**Synonyms:** C6 NBD Glucosylceramide, NBD GluCer(d18:1/6:0), NBD Glucosylceramide (d18:1/6:0), N-hexanoyl-NBD-Glucosylceramide

**MF:** C<sub>36</sub>H<sub>59</sub>N<sub>5</sub>O<sub>11</sub>

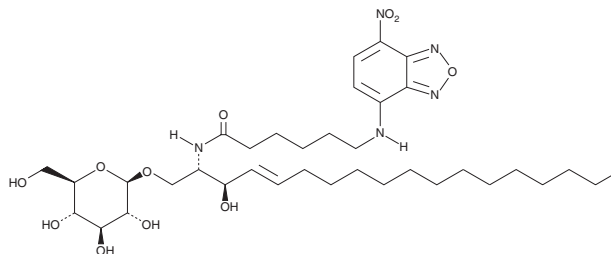
**FW:** 737.9

**Purity:** ≥98%

**Supplied as:** A solid

**Storage:** -20°C

**Stability:** ≥2 years



Information represents the product specifications. Batch specific analytical results are provided on each certificate of analysis.

### Laboratory Procedures

C6 NBD glucosylceramide (d18:1/6:0) is supplied as a solid. A stock solution may be made by dissolving the C6 NBD glucosylceramide (d18:1/6:0) in the solvent of choice. C6 NBD glucosylceramide (d18:1/6:0) is soluble in methanol and a 5:1 solution of chloroform:methanol.

### Description

C6 NBD glucosylceramide (d18:1/6:0) is a biologically active derivative of glucosylceramide that is tagged with a fluorescent C-6 nitrobenzoxadiazole (C-6 NBD; Item No. 18871) group.<sup>1,2</sup> C6 NBD glucosylceramide (d18:1/6:0) has been used to study the metabolism and internalization of glucosylceramide.

### References

1. Kok, J.W., Babia, T., Klappe, K., *et al.* Fluorescent, short-chain C<sub>6</sub>-NBD-sphingomyelin, but not C<sub>6</sub>-NBD-glucosylceramide, is subject to extensive degradation in the plasma membrane: Implications for signal transduction related to cell differentiation. *Biochem. J.* **309**(Pt 3), 905-912 (1995).
2. Tomás, M., Durán, J.M., Lázaro-Diéguez, F., *et al.* Fluorescent analogues of plasma membrane sphingolipids are sorted to different intracellular compartments in astrocytes; Harmful effects of chronic ethanol exposure on sphingolipid trafficking and metabolism. *FEBS Lett.* **563**(1-3), 59-65 (2004).

#### WARNING

THIS PRODUCT IS FOR RESEARCH ONLY - NOT FOR HUMAN OR VETERINARY DIAGNOSTIC OR THERAPEUTIC USE.

#### SAFETY DATA

This material should be considered hazardous until further information becomes available. Do not ingest, inhale, get in eyes, on skin, or on clothing. Wash thoroughly after handling. Before use, the user must review the complete Safety Data Sheet, which has been sent via email to your institution.

#### WARRANTY AND LIMITATION OF REMEDY

Buyer agrees to purchase the material subject to Cayman's Terms and Conditions. Complete Terms and Conditions including Warranty and Limitation of Liability information can be found on our website.

Copyright Cayman Chemical Company, 02/14/2018

#### CAYMAN CHEMICAL

1180 EAST ELLSWORTH RD

ANN ARBOR, MI 48108 · USA

**PHONE:** [800] 364-9897

[734] 971-3335

**FAX:** [734] 971-3640

CUSTSERV@CAYMANCHEM.COM

WWW.CAYMANCHEM.COM