



# SZABO SCANDIC

Part of Europa Biosite

## Produktinformation



Forschungsprodukte & Biochemikalien



Zellkultur & Verbrauchsmaterial



Diagnostik & molekulare Diagnostik



Laborgeräte & Service

Weitere Information auf den folgenden Seiten!  
See the following pages for more information!



### Lieferung & Zahlungsart

siehe unsere [Liefer- und Versandbedingungen](#)

### Zuschläge

- Mindermengenzuschlag
- Trockeneiszuschlag
- Gefahrgutzuschlag
- Expressversand

### SZABO-SCANDIC HandelsgmbH

Quellenstraße 110, A-1100 Wien

T. +43(0)1 489 3961-0

F. +43(0)1 489 3961-7

[mail@szabo-scandic.com](mailto:mail@szabo-scandic.com)

[www.szabo-scandic.com](http://www.szabo-scandic.com)

[linkedin.com/company/szaboscandic](https://www.linkedin.com/company/szaboscandic) 

# PRODUCT INFORMATION



## C22 Glucosylceramide (d18:1/22:0)

Item No. 23210

**CAS Registry No.:** 119242-44-3  
**Formal Name:** N-[(1S,2R,3E)-1-[(β-D-glucopyranosyloxy)methyl]-2-hydroxy-3-heptadecen-1-yl]-docosanamide  
**Synonyms:** N-C22:0-Glucocerebroside, GluCer(18:1/22:0), Glucosylceramide (d18:1/22:0), N-Docosanoyl-β-glucosylsphingosine, N-Docosanoyl-glucopsychosine

**MF:** C<sub>46</sub>H<sub>89</sub>NO<sub>8</sub>

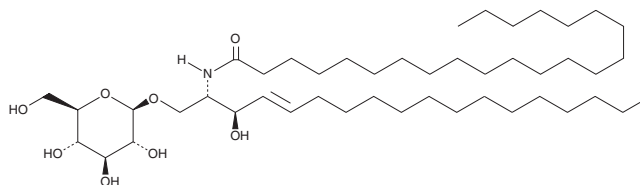
**FW:** 784.2

**Purity:** ≥98%

**Supplied as:** A solid

**Storage:** -20°C

**Stability:** ≥2 years



Information represents the product specifications. Batch specific analytical results are provided on each certificate of analysis.

### Laboratory Procedures

C22 glucosylceramide (d18:1/22:0) is supplied as a solid. A stock solution may be made by dissolving the C22 glucosylceramide (d18:1/22:0) in the solvent of choice. C22 glucosylceramide (d18:1/22:0) is soluble in chloroform.

### Description

C22 glucosylceramide is an endogenous glucosylceramide.<sup>1-3</sup> Glucosylceramides are major constituents of skin lipid membranes where they play a role in maintaining the water permeability barrier. They are precursors in the synthesis of lactosylceramide (Item No. 16983), as well as oligoglycolipids and gangliosides. Phospholipase A<sub>2</sub> (PLA<sub>2</sub>) type X11A knockdown increases C22 glucosylceramide expression in rat brain.<sup>3</sup> It is also increased in the brain, but not the liver or spinal cord, of mice fed a methionine-restricted diet.<sup>2</sup> In human athletes, plasma levels of C22 glucosylceramide increase during exercise and return to basal levels during recovery.<sup>1</sup> This product contains C22 glucosylceramide isolated from bovine buttermilk.

### References

1. Bergman, B.C., Brozinick, J.T., Strauss, A., *et al.* Serum sphingolipids: Relationships to insulin sensitivity and changes with exercise in humans. *Am. J. Physiol. Endocrinol. Metab.* **309(4)**, E398-E408 (2015).
2. Jové, M., Ayala, V., Ramírez-Núñez, O., *et al.* Specific lipidome signatures in central nervous system from methionine-restricted mice. *J. Proteome Res.* **12(6)**, 2679-2689 (2013).
3. Ee, S.-M., Lo, Y.-L., Shui, G., *et al.* Distribution of secretory phospholipase A<sub>2</sub> X11A in the brain and its role in lipid metabolism and cognition. *Mol. Neurobiol.* **50(1)**, 60-75 (2014).

#### WARNING

THIS PRODUCT IS FOR RESEARCH ONLY - NOT FOR HUMAN OR VETERINARY DIAGNOSTIC OR THERAPEUTIC USE.

#### SAFETY DATA

This material should be considered hazardous until further information becomes available. Do not ingest, inhale, get in eyes, on skin, or on clothing. Wash thoroughly after handling. Before use, the user must review the [complete](#) Safety Data Sheet, which has been sent via email to your institution.

#### WARRANTY AND LIMITATION OF REMEDY

Buyer agrees to purchase the material subject to Cayman's Terms and Conditions. Complete Terms and Conditions including Warranty and Limitation of Liability information can be found on our website.

Copyright Cayman Chemical Company, 04/30/2020

#### CAYMAN CHEMICAL

1180 EAST ELLSWORTH RD

ANN ARBOR, MI 48108 · USA

**PHONE:** [800] 364-9897

[734] 971-3335

**FAX:** [734] 971-3640

CUSTSERV@CAYMANCHEM.COM

WWW.CAYMANCHEM.COM