



# SZABO SCANDIC

Part of Europa Biosite

## Produktinformation



Forschungsprodukte & Biochemikalien



Zellkultur & Verbrauchsmaterial



Diagnostik & molekulare Diagnostik



Laborgeräte & Service

Weitere Information auf den folgenden Seiten!  
See the following pages for more information!



### Lieferung & Zahlungsart

siehe unsere [Liefer- und Versandbedingungen](#)

### Zuschläge

- Mindermengenzuschlag
- Trockeneiszuschlag
- Gefahrgutzuschlag
- Expressversand

### SZABO-SCANDIC HandelsgmbH

Quellenstraße 110, A-1100 Wien

T. +43(0)1 489 3961-0

F. +43(0)1 489 3961-7

[mail@szabo-scandic.com](mailto:mail@szabo-scandic.com)

[www.szabo-scandic.com](http://www.szabo-scandic.com)

[linkedin.com/company/szaboscandic](https://www.linkedin.com/company/szaboscandic) 

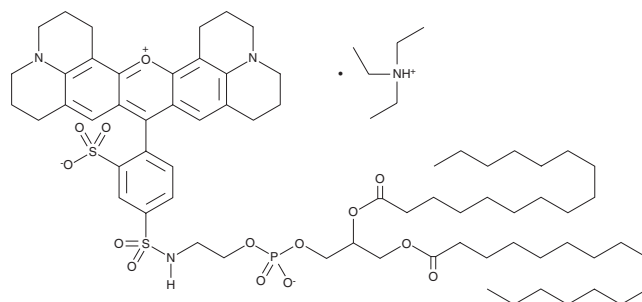
# PRODUCT INFORMATION



## Sulforhodamine 101 DHPE

Item No. 23235

**CAS Registry No.:** 187099-99-6  
**Formal Name:** 2,3,6,7,12,13,16,17-octahydro-9-[4-[[[(7R)-4-hydroxy-4-oxido-10-oxo-7-[(1-oxohexadecyl)oxy]-3,5,9-trioxa-4-phosphapentacos-1-yl]amino]sulfonyl]-2-sulphophenyl]-1H,5H,11H,15H-xantheno[2,3,4-ij:5,6,7-i'j']diquinolizin-18-ium, inner salt, compd. with N,N-diethylethanamine (1:1)  
**MF:** C<sub>68</sub>H<sub>101</sub>N<sub>3</sub>O<sub>14</sub>PS<sub>2</sub> • C<sub>6</sub>H<sub>16</sub>N  
**FW:** 1,381.9  
**Purity:** ≥95%  
**Supplied as:** A solid  
**Storage:** -20°C  
**Stability:** ≥2 years



Information represents the product specifications. Batch specific analytical results are provided on each certificate of analysis.

### Laboratory Procedures

Sulforhodamine 101 DHPE is supplied as a solid. A stock solution may be made by dissolving the sulforhodamine 101 DHPE in the solvent of choice. Sulforhodamine 101 DHPE is soluble in the organic solvent DMSO, which should be purged with an inert gas.

### Description

Sulforhodamine 101 DHPE is a fluorescent probe made from the conjugation of the phospholipid 1,2-dipalmitoyl-*sn*-glycero-3-PE (Item No. 15092) to sulforhodamine 101 (Item No. 16953), a red fluorescent dye that displays excitation/emission spectra of 586/605 nm, respectively.<sup>1,2</sup> It integrates into phospholipid bilayers and has been used for imaging of solid supported lipid bilayers, detection of protein-ligand binding on bilayers, and to monitor colocalization of lipid probes in liposomes *via* resonance energy transfer (RET).<sup>1,3,4</sup>

### References

1. Jung, H., Robison, A.D., and Cremer, P.S. Detecting protein-ligand binding on supported bilayers by local pH modulation. *J. Am. Chem. Soc.* **131**(3), 1006-1014 (2009).
2. Nimmerjahn, A., Kirchhoff, F., Kerr, J.N., *et al.* Sulforhodamine 101 as a specific marker of astroglia in the neocortex *in vivo*. *Nat. Methods* **1**(1), 31-37 (2004).
3. Castellana, E.T. and Cremer, P.S. Imaging large arrays of supported lipid bilayers with a microscope. *Biointerphases* **2**(2), 57-63 (2007).
4. Uster, P.S. and Pagano, R.E. Resonance energy transfer microscopy: Visual colocalization of fluorescent lipid probes in liposomes. *Methods Enzymol.* **171**, 850-857 (1989).

#### WARNING

THIS PRODUCT IS FOR RESEARCH ONLY - NOT FOR HUMAN OR VETERINARY DIAGNOSTIC OR THERAPEUTIC USE.

#### SAFETY DATA

This material should be considered hazardous until further information becomes available. Do not ingest, inhale, get in eyes, on skin, or on clothing. Wash thoroughly after handling. Before use, the user must review the [complete](#) Safety Data Sheet, which has been sent via email to your institution.

#### WARRANTY AND LIMITATION OF REMEDY

Buyer agrees to purchase the material subject to Cayman's Terms and Conditions. Complete Terms and Conditions including Warranty and Limitation of Liability information can be found on our website.

Copyright Cayman Chemical Company, 07/11/2018

#### CAYMAN CHEMICAL

1180 EAST ELLSWORTH RD  
ANN ARBOR, MI 48108 · USA

**PHONE:** [800] 364-9897

[734] 971-3335

**FAX:** [734] 971-3640

CUSTSERV@CAYMANCHEM.COM  
WWW.CAYMANCHEM.COM